



**HEALTH QUARTERLY STATEMENT**  
 AS OF SEPTEMBER 30, 2019  
 OF THE CONDITION AND AFFAIRS OF THE  
**Compcare Health Services Insurance Corporation**

NAIC Group Code 0671 0671 NAIC Company Code 95693 Employer's ID Number 39-1462554  
 (Current) (Prior)

Organized under the Laws of Wisconsin, State of Domicile or Port of Entry WI

Country of Domicile United States of America

Licensed as business type: Health Maintenance Organization

Is HMO Federally Qualified? Yes [ ] No [ X ]

Incorporated/Organized 01/01/1984 Commenced Business 02/05/1976

Statutory Home Office N17 W24340 Riverwood Drive, Waukesha, WI, US 53188  
 (Street and Number) (City or Town, State, Country and Zip Code)

Main Administrative Office N17 W24340 Riverwood Drive  
 (Street and Number)  
Waukesha, WI, US 53188 262-523-4020  
 (City or Town, State, Country and Zip Code) (Area Code) (Telephone Number)

Mail Address N17 W24340 Riverwood Drive, Waukesha, WI, US 53188  
 (Street and Number or P.O. Box) (City or Town, State, Country and Zip Code)

Primary Location of Books and Records N17 W24340 Riverwood Drive  
 (Street and Number)  
Waukesha, WI, US 53188 262-523-3683  
 (City or Town, State, Country and Zip Code) (Area Code) (Telephone Number)

Internet Website Address www.anthem.com

Statutory Statement Contact Jill M. Waddell, 262-523-3683  
 (Name) (Area Code) (Telephone Number)  
Jill.Waddell@anthem.com 262-523-4945  
 (E-mail Address) (FAX Number)

**OFFICERS**

President & Chief Executive Officer Paul Christopher Nobile Vice President & Treasurer Vincent Edward Scher  
 Vice President & Secretary Kathleen Susan Kiefer Assistant Secretary Karen Elizabeth Geiger-Niedfeldt #

**OTHER**

Eric (Rick) Kenneth Noble, Assistant Treasurer Denise Marie Meridith, Valuation Actuary Anthony E Woods #, Vice President & Medicaid Plan President

**DIRECTORS OR TRUSTEES**

Paul Christopher Nobile Jack Louis Young # Anthony E Woods #

State of Wisconsin SS:  
 County of Waukesha

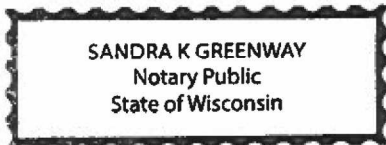
The officers of this reporting entity being duly sworn, each depose and say that they are the described officers of said reporting entity, and that on the reporting period stated above, all of the herein described assets were the absolute property of the said reporting entity, free and clear from any liens or claims thereon, except as herein stated, and that this statement, together with related exhibits, schedules and explanations therein contained, annexed or referred to, is a full and true statement of all the assets and liabilities and of the condition and affairs of the said reporting entity as of the reporting period stated above, and of its income and deductions therefrom for the period ended, and have been completed in accordance with the NAIC Annual Statement Instructions and Accounting Practices and Procedures manual except to the extent that: (1) state law may differ; or, (2) that state rules or regulations require differences in reporting not related to accounting practices and procedures, according to the best of their information, knowledge and belief, respectively. Furthermore, the scope of this attestation by the described officers also includes the related corresponding electronic filing with the NAIC, when required, that is an exact copy (except for formatting differences due to electronic filing) of the enclosed statement. The electronic filing may be requested by various regulators in lieu of or in addition to the enclosed statement.

Paul Christopher Nobile Kathleen Susan Kiefer Vincent Edward Scher  
 President & Chief Executive Officer Vice President & Secretary Vice President & Treasurer

Subscribed and sworn to before me this 22nd day of October, 2019

Sandra K. Greenway  
My commission expires May 7, 2021

- a. Is this an original filing?  Yes [ X ] No [ ]  
 b. If no,  
 1. State the amendment number.....  
 2. Date filed.....  
 3. Number of pages attached.....



STATEMENT AS OF SEPTEMBER 30, 2019 OF THE Compcare Health Services Insurance Corporation

**ASSETS**

	Current Statement Date			4 December 31 Prior Year Net Admitted Assets
	1 Assets	2 Nonadmitted Assets	3 Net Admitted Assets (Cols. 1 - 2)	
1. Bonds .....	314,047,790	0	314,047,790	251,880,477
2. Stocks:				
2.1 Preferred stocks .....			0	0
2.2 Common stocks .....			0	0
3. Mortgage loans on real estate:				
3.1 First liens .....			0	0
3.2 Other than first liens.....			0	0
4. Real estate:				
4.1 Properties occupied by the company (less \$ encumbrances) .....			0	0
4.2 Properties held for the production of income (less \$ ..... encumbrances) .....			0	0
4.3 Properties held for sale (less \$ encumbrances) .....			0	0
5. Cash (\$ .....11,379,825 ), cash equivalents (\$ ..... 11,998,680 ) and short-term investments (\$ ..... ) .....	23,378,505		23,378,505	32,239,396
6. Contract loans (including \$ ..... premium notes) .....			0	0
7. Derivatives .....			0	0
8. Other invested assets .....	16,481,175	16,481,175	0	0
9. Receivables for securities .....			0	4
10. Securities lending reinvested collateral assets .....	18,452,582		18,452,582	1,391,942
11. Aggregate write-ins for invested assets .....	0	0	0	0
12. Subtotals, cash and invested assets (Lines 1 to 11) .....	372,360,052	16,481,175	355,878,877	285,511,819
13. Title plants less \$ ..... charged off (for Title insurers only) .....			0	0
14. Investment income due and accrued .....	2,190,883	0	2,190,883	1,892,212
15. Premiums and considerations:				
15.1 Uncollected premiums and agents' balances in the course of collection .....	15,612,624	418,473	15,194,151	17,675,876
15.2 Deferred premiums, agents' balances and installments booked but deferred and not yet due (including \$ ..... earned but unbilled premiums) .....			0	0
15.3 Accrued retrospective premiums (\$ .....106,698 ) and contracts subject to redetermination (\$ ..... 18,521,585 ) .....	18,628,283	0	18,628,283	8,312,966
16. Reinsurance:				
16.1 Amounts recoverable from reinsurers .....			0	21,116
16.2 Funds held by or deposited with reinsured companies .....			0	0
16.3 Other amounts receivable under reinsurance contracts .....			0	0
17. Amounts receivable relating to uninsured plans .....	5,715,774	516,490	5,199,284	1,954,713
18.1 Current federal and foreign income tax recoverable and interest thereon .....			0	0
18.2 Net deferred tax asset .....	4,959,153	0	4,959,153	3,930,298
19. Guaranty funds receivable or on deposit .....			0	0
20. Electronic data processing equipment and software .....			0	0
21. Furniture and equipment, including health care delivery assets (\$ ..... ) .....			0	0
22. Net adjustment in assets and liabilities due to foreign exchange rates .....			0	0
23. Receivables from parent, subsidiaries and affiliates .....			0	0
24. Health care (\$ .....12,052,802 ) and other amounts receivable .....	20,284,033	8,231,231	12,052,802	7,746,685
25. Aggregate write-ins for other than invested assets .....	9,753,716	7,037,275	2,716,441	2,209,293
26. Total assets excluding Separate Accounts, Segregated Accounts and Protected Cell Accounts (Lines 12 to 25) .....	449,504,518	32,684,645	416,819,874	329,254,978
27. From Separate Accounts, Segregated Accounts and Protected Cell Accounts .....			0	0
28. Total (Lines 26 and 27)	449,504,518	32,684,645	416,819,874	329,254,978
<b>DETAILS OF WRITE-INS</b>				
1101. ....			0	
1102. ....				
1103. ....				
1198. Summary of remaining write-ins for Line 11 from overflow page .....	0	0	0	0
1199. Totals (Lines 1101 through 1103 plus 1198)(Line 11 above)	0	0	0	0
2501. Receivable from State of Wisconsin for Medicaid programs .....	2,116,441		2,116,441	2,209,293
2502. City income tax receivable .....	600,000		600,000	
2503. Prepaid expenses .....	7,035,848	7,035,848	0	0
2598. Summary of remaining write-ins for Line 25 from overflow page .....	1,427	1,427	0	0
2599. Totals (Lines 2501 through 2503 plus 2598)(Line 25 above)	9,753,716	7,037,275	2,716,441	2,209,293

## LIABILITIES, CAPITAL AND SURPLUS

	Current Period			Prior Year
	1 Covered	2 Uncovered	3 Total	4 Total
1. Claims unpaid (less \$ .....0 reinsurance ceded) .....	98,629,297	3,260,473	101,889,770	73,024,272
2. Accrued medical incentive pool and bonus amounts .....	2,478,290		2,478,290	2,234,884
3. Unpaid claims adjustment expenses .....	2,881,171		2,881,171	2,053,221
4. Aggregate health policy reserves, including the liability of \$ .....0 for medical loss ratio rebate per the Public Health Service Act .....	2,212,930		2,212,930	1,429,681
5. Aggregate life policy reserves .....			0	0
6. Property/casualty unearned premium reserve .....			0	0
7. Aggregate health claim reserves .....	96,714		96,714	94,019
8. Premiums received in advance .....	10,743,318		10,743,318	8,755,751
9. General expenses due or accrued .....	15,374,719		15,374,719	12,626,762
10.1 Current federal and foreign income tax payable and interest thereon (including \$ ..... on realized gains (losses)) .....	6,779,687		6,779,687	2,216,967
10.2 Net deferred tax liability .....			0	0
11. Ceded reinsurance premiums payable .....			0	0
12. Amounts withheld or retained for the account of others .....	125,204		125,204	47,481
13. Remittances and items not allocated .....	3,280,486		3,280,486	10,904,850
14. Borrowed money (including \$ ..... current) and interest thereon \$ ..... (including \$ ..... current) .....			0	0
15. Amounts due to parent, subsidiaries and affiliates .....	50,196,698		50,196,698	37,367,984
16. Derivatives .....			0	0
17. Payable for securities .....	4,700,983		4,700,983	0
18. Payable for securities lending .....	18,452,582		18,452,582	1,391,942
19. Funds held under reinsurance treaties (with \$ ..... authorized reinsurers, \$ ..... unauthorized reinsurers and \$ ..... certified reinsurers) .....			0	0
20. Reinsurance in unauthorized and certified (\$ ..... ) companies .....			0	0
21. Net adjustments in assets and liabilities due to foreign exchange rates .....			0	0
22. Liability for amounts held under uninsured plans .....	13,999,234		13,999,234	6,563,549
23. Aggregate write-ins for other liabilities (including \$ .....4,218,829 current) .....	4,298,000	0	4,298,000	2,664,014
24. Total liabilities (Lines 1 to 23) .....	234,249,313	3,260,473	237,509,785	161,375,377
25. Aggregate write-ins for special surplus funds .....	XXX	XXX	23,100,224	0
26. Common capital stock .....	XXX	XXX	2,000,000	2,000,000
27. Preferred capital stock .....	XXX	XXX		
28. Gross paid in and contributed surplus .....	XXX	XXX	66,329,773	66,329,773
29. Surplus notes .....	XXX	XXX		
30. Aggregate write-ins for other than special surplus funds .....	XXX	XXX	0	0
31. Unassigned funds (surplus) .....	XXX	XXX	87,880,091	99,549,827
32. Less treasury stock, at cost:				
32.1 ..... shares common (value included in Line 26 \$ ..... ) .....	XXX	XXX		
32.2 ..... shares preferred (value included in Line 27 \$ ..... ) .....	XXX	XXX		
33. Total capital and surplus (Lines 25 to 31 minus Line 32) .....	XXX	XXX	179,310,088	167,879,600
34. Total liabilities, capital and surplus (Lines 24 and 33) .....	XXX	XXX	416,819,874	329,254,977
<b>DETAILS OF WRITE-INS</b>				
2301. Miscellaneous liability .....	2,470,102		2,470,102	842,462
2302. Escheat liability .....	1,037,811		1,037,811	925,504
2303. Other premium liability .....	790,087		790,087	896,048
2398. Summary of remaining write-ins for Line 23 from overflow page .....	0	0	0	0
2399. Totals (Lines 2301 through 2303 plus 2398)(Line 23 above) .....	4,298,000	0	4,298,000	2,664,014
2501. Estimated ACA health insurer fee .....	XXX	XXX	23,100,224	0
2502. ....	XXX	XXX		
2503. ....	XXX	XXX		
2598. Summary of remaining write-ins for Line 25 from overflow page .....	XXX	XXX	0	0
2599. Totals (Lines 2501 through 2503 plus 2598)(Line 25 above) .....	XXX	XXX	23,100,224	0
3001. ....	XXX	XXX		
3002. ....	XXX	XXX		
3003. ....	XXX	XXX		
3098. Summary of remaining write-ins for Line 30 from overflow page .....	XXX	XXX	0	0
3099. Totals (Lines 3001 through 3003 plus 3098)(Line 30 above) .....	XXX	XXX	0	0

**STATEMENT OF REVENUE AND EXPENSES**

	Current Year To Date		Prior Year To Date	Prior Year Ended December 31
	1 Uncovered	2 Total	3 Total	4 Total
1. Member Months	XXX	2,105,830	1,849,210	2,482,192
2. Net premium income ( including \$ non-health premium income)	XXX	916,532,733	674,510,353	913,943,033
3. Change in unearned premium reserves and reserve for rate credits	XXX	(495,798)	(150,373)	374,408
4. Fee-for-service (net of \$ medical expenses)	XXX			0
5. Risk revenue	XXX			0
6. Aggregate write-ins for other health care related revenues	XXX	0	0	0
7. Aggregate write-ins for other non-health revenues	XXX	0	0	0
8. Total revenues (Lines 2 to 7)	XXX	916,036,934	674,359,980	914,317,441
<b>Hospital and Medical:</b>				
9. Hospital/medical benefits	19,378,352	529,758,763	386,716,111	527,731,282
10. Other professional services	2,967,496	81,124,390	64,048,062	88,390,825
11. Outside referrals	393,147	10,747,725	5,570,895	9,705,157
12. Emergency room and out-of-area	1,028,371	28,113,248	17,761,789	25,518,721
13. Prescription drugs		88,226,015	55,280,648	75,777,899
14. Aggregate write-ins for other hospital and medical	0	0	0	0
15. Incentive pool, withhold adjustments and bonus amounts		4,760,063	6,712,081	7,904,097
16. Subtotal (Lines 9 to 15)	23,767,367	742,730,205	536,089,586	735,027,981
<b>Less:</b>				
17. Net reinsurance recoveries		11,112		0
18. Total hospital and medical (Lines 16 minus 17)	23,767,367	742,719,092	536,089,586	735,027,981
19. Non-health claims (net)				
20. Claims adjustment expenses, including \$ 26,788,396 cost containment expenses		40,656,737	28,167,324	42,148,232
21. General administrative expenses		71,617,153	70,559,924	87,878,235
22. Increase in reserves for life and accident and health contracts (including \$ increase in reserves for life only)		(6,379)	(16,273)	(18,704)
23. Total underwriting deductions (Lines 18 through 22)	23,767,367	854,986,603	634,800,562	865,035,744
24. Net underwriting gain or (loss) (Lines 8 minus 23)	XXX	61,050,331	39,559,418	49,281,697
25. Net investment income earned		8,069,288	17,473,263	19,661,206
26. Net realized capital gains (losses) less capital gains tax of \$ 51,764		49,231	129,106	52,358
27. Net investment gains (losses) (Lines 25 plus 26)	0	8,118,518	17,602,369	19,713,564
28. Net gain or (loss) from agents' or premium balances charged off [(amount recovered \$ ) (amount charged off \$ 84,849 )]		(84,849)	(8,849)	(37,094)
29. Aggregate write-ins for other income or expenses	0	24,763	7,457,483	7,454,792
30. Net income or (loss) after capital gains tax and before all other federal income taxes (Lines 24 plus 27 plus 28 plus 29)	XXX	69,108,764	64,610,422	76,412,959
31. Federal and foreign income taxes incurred	XXX	14,406,817	14,669,387	17,314,457
32. Net income (loss) (Lines 30 minus 31)	XXX	54,701,947	49,941,034	59,098,502
<b>DETAILS OF WRITE-INS</b>				
0601.	XXX			
0602.	XXX			
0603.	XXX			
0698. Summary of remaining write-ins for Line 6 from overflow page	XXX	0	0	0
0699. Totals (Lines 0601 through 0603 plus 0698)(Line 6 above)	XXX	0	0	0
0701.	XXX			
0702.	XXX			
0703.	XXX			
0798. Summary of remaining write-ins for Line 7 from overflow page	XXX	0	0	0
0799. Totals (Lines 0701 through 0703 plus 0798)(Line 7 above)	XXX	0	0	0
1401.				
1402.				
1403.				
1498. Summary of remaining write-ins for Line 14 from overflow page	0	0	0	0
1499. Totals (Lines 1401 through 1403 plus 1498)(Line 14 above)	0	0	0	0
2901. Miscellaneous other income		24,763	10,883	8,192
2902. Income from sale of membership to an affiliate			7,446,600	7,446,600
2903.				
2998. Summary of remaining write-ins for Line 29 from overflow page	0	0	0	0
2999. Totals (Lines 2901 through 2903 plus 2998)(Line 29 above)	0	24,763	7,457,483	7,454,792

**STATEMENT OF REVENUE AND EXPENSES (Continued)**

	1 Current Year to Date	2 Prior Year to Date	3 Prior Year Ended December 31
<b>CAPITAL AND SURPLUS ACCOUNT</b>			
33. Capital and surplus prior reporting year.....	167,879,600	152,882,325	152,882,325
34. Net income or (loss) from Line 32.....	54,701,947	49,941,034	59,098,502
35. Change in valuation basis of aggregate policy and claim reserves.....			
36. Change in net unrealized capital gains (losses) less capital gains tax of \$ ..... 19,094	12,608,020	(8,879,875)	(7,772,107)
37. Change in net unrealized foreign exchange capital gain or (loss).....			
38. Change in net deferred income tax.....	1,047,948	606,435	1,485,886
39. Change in nonadmitted assets.....	(16,927,427)	6,714,126	2,184,995
40. Change in unauthorized and certified reinsurance.....	0	0	0
41. Change in treasury stock.....	0	0	0
42. Change in surplus notes.....	0	0	0
43. Cumulative effect of changes in accounting principles.....			
44. Capital Changes:			
44.1 Paid in.....		0	0
44.2 Transferred from surplus (Stock Dividend).....	0	0	0
44.3 Transferred to surplus.....			
45. Surplus adjustments:			
45.1 Paid in.....	0	0	0
45.2 Transferred to capital (Stock Dividend).....			
45.3 Transferred from capital.....			
46. Dividends to stockholders.....	(40,000,000)	(40,000,000)	(40,000,000)
47. Aggregate write-ins for gains or (losses) in surplus.....	0	0	0
48. Net change in capital & surplus (Lines 34 to 47).....	11,430,488	8,381,720	14,997,276
49. Capital and surplus end of reporting period (Line 33 plus 48)	179,310,088	161,264,045	167,879,600
<b>DETAILS OF WRITE-INS</b>			
4701. ....			
4702. ....			
4703. ....			
4798. Summary of remaining write-ins for Line 47 from overflow page.....	0	0	0
4799. Totals (Lines 4701 through 4703 plus 4798)(Line 47 above)	0	0	0

**CASH FLOW**

	1 Current Year To Date	2 Prior Year To Date	3 Prior Year Ended December 31
<b>Cash from Operations</b>			
1. Premiums collected net of reinsurance .....	911,447,683	665,421,157	914,451,465
2. Net investment income .....	8,599,424	18,311,688	20,795,841
3. Miscellaneous income .....	0	0	0
4. Total (Lines 1 to 3) .....	920,047,107	683,732,845	935,247,306
5. Benefit and loss related payments .....	719,357,660	528,145,807	730,936,110
6. Net transfers to Separate Accounts, Segregated Accounts and Protected Cell Accounts .....			
7. Commissions, expenses paid and aggregate write-ins for deductions .....	104,836,666	76,420,707	112,470,285
8. Dividends paid to policyholders .....			
9. Federal and foreign income taxes paid (recovered) net of \$ ..... 51,764 tax on capital gains (losses) .....	9,895,862	11,156,830	13,580,954
10. Total (Lines 5 through 9) .....	834,090,188	615,723,343	856,987,348
11. Net cash from operations (Line 4 minus Line 10) .....	85,956,920	68,009,502	78,259,957
<b>Cash from Investments</b>			
12. Proceeds from investments sold, matured or repaid:			
12.1 Bonds .....	43,599,598	36,425,513	56,870,151
12.2 Stocks .....	0	0	0
12.3 Mortgage loans .....	0	0	0
12.4 Real estate .....	0	0	0
12.5 Other invested assets .....	0	0	0
12.6 Net gains or (losses) on cash, cash equivalents and short-term investments .....	9,196	0	0
12.7 Miscellaneous proceeds .....	4,700,987	10,707,866	8,063,333
12.8 Total investment proceeds (Lines 12.1 to 12.7) .....	48,309,781	47,133,379	64,933,484
13. Cost of investments acquired (long-term only):			
13.1 Bonds .....	106,403,187	46,951,630	54,039,482
13.2 Stocks .....	0	0	0
13.3 Mortgage loans .....	0	0	0
13.4 Real estate .....	0	0	0
13.5 Other invested assets .....	0	0	0
13.6 Miscellaneous applications .....	17,060,640	10	3
13.7 Total investments acquired (Lines 13.1 to 13.6) .....	123,463,827	46,951,640	54,039,485
14. Net increase (or decrease) in contract loans and premium notes .....	0	0	0
15. Net cash from investments (Line 12.8 minus Line 13.7 and Line 14) .....	(75,154,046)	181,739	10,893,999
<b>Cash from Financing and Miscellaneous Sources</b>			
16. Cash provided (applied):			
16.1 Surplus notes, capital notes .....	0	0	0
16.2 Capital and paid in surplus, less treasury stock .....	0	0	0
16.3 Borrowed funds .....	0	0	0
16.4 Net deposits on deposit-type contracts and other insurance liabilities .....	0	0	0
16.5 Dividends to stockholders .....	40,000,000	40,000,000	40,000,000
16.6 Other cash provided (applied) .....	20,336,235	(13,149,253)	(22,825,657)
17. Net cash from financing and miscellaneous sources (Line 16.1 through Line 16.4 minus Line 16.5 plus Line 16.6) .....	(19,663,765)	(53,149,253)	(62,825,658)
<b>RECONCILIATION OF CASH, CASH EQUIVALENTS AND SHORT-TERM INVESTMENTS</b>			
18. Net change in cash, cash equivalents and short-term investments (Line 11, plus Lines 15 and 17) .....	(8,860,891)	15,041,988	26,328,299
19. Cash, cash equivalents and short-term investments:			
19.1 Beginning of year .....	32,239,396	5,911,097	5,911,097
19.2 End of period (Line 18 plus Line 19.1) .....	23,378,505	20,953,085	32,239,396

Note: Supplemental disclosures of cash flow information for non-cash transactions:

STATEMENT AS OF SEPTEMBER 30, 2019 OF THE Compcare Health Services Insurance Corporation

**EXHIBIT OF PREMIUMS, ENROLLMENT AND UTILIZATION**

	1 Total	Comprehensive (Hospital & Medical)		4 Medicare Supplement	5 Vision Only	6 Dental Only	7 Federal Employees Health Benefit Plan	8 Title XVIII Medicare	9 Title XIX Medicaid	10 Other
		2 Individual	3 Group							
<b>Total Members at end of:</b>										
1. Prior Year .....	211,513	2,609	76,925	54	0	18,140	0	22,582	90,423	780
2. First Quarter .....	232,131	2,398	80,211	49	0	15,976	0	40,397	92,392	708
3. Second Quarter .....	237,364	2,335	78,516	45	0	15,891	0	45,297	94,605	675
4. Third Quarter .....	238,415	2,271	76,342	44		12,982		50,597	95,516	663
5. Current Year	0									
6. Current Year Member Months	2,105,830	21,259	705,457	421		135,132		394,432	842,900	6,229
<b>Total Member Ambulatory Encounters for Period:</b>										
7. Physician .....	1,200,646	5,611	264,012	347				527,099	403,577	
8. Non-Physician .....	1,451,884	5,051	169,249	1,037		11,988		497,275	767,284	
9. Total	2,652,530	10,662	433,261	1,384	0	11,988	0	1,024,374	1,170,861	0
10. Hospital Patient Days Incurred	99,500	221	12,367	50				49,046	37,816	
11. Number of Inpatient Admissions	20,355	41	2,956	15				7,950	9,393	
12. Health Premiums Written (a) .....	916,532,733	10,158,354	337,762,157	167,714		5,856,304		382,421,025	179,907,738	259,441
13. Life Premiums Direct .....	0									
14. Property/Casualty Premiums Written .....	0									
15. Health Premiums Earned .....	916,036,934	10,158,354	337,762,157	165,231		5,856,304		381,927,709	179,907,738	259,441
16. Property/Casualty Premiums Earned .....	0									
17. Amount Paid for Provision of Health Care Services.....	713,618,605	7,573,125	272,090,884	133,051		4,710,531		281,930,781	147,043,674	136,559
18. Amount Incurred for Provision of Health Care Services	742,730,205	7,738,679	270,605,324	127,941		4,604,372		311,402,517	148,072,643	178,729

(a) For health premiums written: amount of Medicare Title XVIII exempt from state taxes or fees \$ .....382,421,025





## UNDERWRITING AND INVESTMENT EXHIBIT

### ANALYSIS OF CLAIMS UNPAID - PRIOR YEAR - NET OF REINSURANCE

Line of Business	Claims Paid Year to Date		Liability End of Current Quarter		5 Claims Incurred in Prior Years (Columns 1 + 3)	6 Estimated Claim Reserve and Claim Liability December 31 of Prior Year
	1 On Claims Incurred Prior to January 1 of Current Year	2 On Claims Incurred During the Year	3 On Claims Unpaid Dec. 31 of Prior Year	4 On Claims Incurred During the Year		
1. Comprehensive (hospital and medical) .....	29,697,581	257,829,038	928,927	34,998,726	30,626,508	37,419,888
2. Medicare Supplement .....	10,612	130,431	205	24,786	10,817	30,100
3. Dental Only .....	417,117	4,298,951	16,416	277,023	433,533	399,598
4. Vision Only .....	0	0	0	0	0	0
5. Federal Employees Health Benefits Plan .....	0	0	0	0	0	0
6. Title XVIII - Medicare .....	15,696,960	274,091,603	449,897	45,205,654	16,146,857	16,137,977
7. Title XIX - Medicaid .....	17,791,273	129,274,172	(487,737)	20,510,337	17,303,536	19,110,649
8. Other health .....	240	136,891	260	61,989	500	20,079
9. Health subtotal (Lines 1 to 8) .....	63,613,783	665,761,086	907,968	101,078,515	64,521,751	73,118,291
10. Healthcare receivables (a) .....	631,158	19,652,875	0	0	631,158	0
11. Other non-health .....	0	0	0	0	0	0
12. Medical incentive pools and bonus amounts .....	2,407,646	2,109,011	830,170	1,648,121	3,237,816	2,234,884
13. Totals (Lines 9-10+11+12)	65,390,271	648,217,222	1,738,138	102,726,636	67,128,409	75,353,175

(a) Excludes \$ ..... loans or advances to providers not yet expensed.

STATEMENT AS OF SEPTEMBER 30, 2019 OF THE Compcare Health Services Insurance Corporation  
**NOTES TO FINANCIAL STATEMENTS**

*For the purposes of the quarterly interim financial information, it is presumed that the users of the interim financial information have read or have access to the Annual Statement as of December 31, 2018. This presentation addresses only significant events occurring since the last Annual Statement.*

**1. Summary of Significant Accounting Policies and Going Concern**

**A. Accounting Practices**

The accompanying financial statements of Compcare Health Services Insurance Corporation (the “Company”) have been prepared in conformity with the National Association of Insurance Commissioners’ (“NAIC”) *Annual Statement Instructions* and in accordance with accounting practices prescribed or permitted by the Office of the Commissioner of Insurance of the State of Wisconsin (the “OCI”). The OCI has adopted the accounting policies found in the NAIC *Accounting Practices and Procedures Manual* (“NAIC SAP”) as a component of prescribed practices. Additionally, the OCI has adopted certain prescribed accounting practices that differ from those found in NAIC SAP, which impact the Company, specifically the non-admission of receivables from affiliates. The OCI has the right to permit other specific practices that deviate from prescribed practices. The Company employed no permitted practices in preparing the accompanying statutory basis financial statements.

A reconciliation of the Company’s net income and capital and surplus between NAIC SAP and practices prescribed and permitted by the OCI is shown below:

	SSAP #	F/S Page	F/S Line #	September 30, 2019	December 31, 2018
<b><u>Net Income</u></b>					
(1) Compcare Health Services Insurance Corporation state basis (Page 4, Line 32, Columns 2 & 4)	XXX	XXX	XXX	\$ 54,701,947	\$ 59,098,502
(2) State Prescribed Practices that is an increase/(decrease) from NAIC SAP:				—	—
(3) State Permitted Practices that is an increase/(decrease) from NAIC SAP:				—	—
(4) NAIC SAP (1-2-3=4)	XXX	XXX	XXX	\$ 54,701,947	\$ 59,098,502
<b><u>Surplus</u></b>					
(5) Compcare Health Services Insurance Corporation state basis (Page 3, Line 33, Columns 3 & 4)	XXX	XXX	XXX	\$ 179,310,088	\$ 167,879,600
(6) State Prescribed Practices that increase/(decrease) NAIC SAP: Nonadmittance of amounts due from affiliates pursuant to Ins. 9.10 of the Wisconsin Admin. Code, effective March 1, 2000.	4,25	2	17, 18.1, 24	(2,108,216)	(790,576)
(7) State Permitted Practices that is an increase/(decrease) from NAIC SAP:				—	—
(8) NAIC SAP (5-6-7=8)	XXX	XXX	XXX	\$ 181,418,304	\$ 168,670,176

STATEMENT AS OF SEPTEMBER 30, 2019 OF THE Compcare Health Services Insurance Corporation  
NOTES TO FINANCIAL STATEMENTS

**B. Use of Estimates in the Preparation of the Financial Statements**

No significant change.

**C. Accounting Policies**

- (1) No significant change.
- (2) Investment grade bonds not backed by other loans are stated at amortized cost, with amortization calculated based on the modified scientific method, using lower of yield to call or yield to maturity. Non-investment grade bonds are stated at the lower of amortized cost or fair value as determined by various third-party pricing sources.
- (3) - (5) No significant change.
- (6) Loan-backed securities are stated at amortized cost. Pre-payment assumptions for loan-backed securities and structured securities were obtained from broker-dealer survey values or internal estimates. These assumptions are consistent with the current interest rate and economic environment. The retrospective adjustment method is used to value all loan-backed securities. Non-investment grade loan-backed securities are stated at the lower of amortized cost or fair value.
- (7) - (16) No significant change.

**D. Going Concern**

Not applicable.

**2. Accounting Changes and Corrections of Errors**

Not applicable.

**3. Business Combinations and Goodwill**

Not applicable.

**4. Discontinued Operations**

Not applicable.

**5. Investments**

**A. - C.**

Not applicable.

**D. Loan-Backed Securities**

- (1) Prepayment assumptions for single-class and multi-class mortgage-backed and asset-backed securities were obtained from broker-dealer survey values or internal estimates. The Company used various third-party pricing sources in determining the market value of its loan-backed securities.
- (2) The Company did not recognize other-than-temporary impairments on its loan-backed securities during the nine months ended September 30, 2019.
- (3) The Company did not recognize other-than-temporary impairments on its loan-backed securities at September 30, 2019.
- (4) The Company had no impaired securities for which an other-than-temporary impairment had not been recognized in earnings as a realized loss at September 30, 2019.
- (5) The Company had no impaired loan-backed securities at September 30, 2019.

STATEMENT AS OF SEPTEMBER 30, 2019 OF THE Compcare Health Services Insurance Corporation  
NOTES TO FINANCIAL STATEMENTS

**E. Dollar Repurchase Agreements and/or Securities Lending Transactions**

(1) Not applicable.

(2) No significant change.

(3) Collateral Received

a. No significant change.

b. The fair value of that collateral and of the portion of that collateral that it has sold or repledged

\$ 18,456,388

c. No significant change.

(4) Not applicable.

(5) No significant change.

(6) Not applicable.

(7) Not applicable.

**F. Repurchase Agreements Transactions Accounted for as Secured Borrowing**

The Company did not enter into repurchase agreement transactions accounted for as secured borrowing at September 30, 2019.

**G. Reverse Repurchase Agreements Transactions Accounted for as Secured Borrowing**

The Company did not enter into reverse repurchase agreement transactions accounted for as a secured borrowing at September 30, 2019.

**H. Repurchase Agreements Transactions Accounted for as a Sale**

The Company did not enter into repurchase agreement transactions accounted for as a sale at September 30, 2019.

**I. Reverse Repurchase Agreements Transactions Accounted for as a Sale**

The Company did not enter into reverse repurchase agreement transactions accounted for as a sale at September 30, 2019.

**J. Real Estate**

Not applicable.

**K. Investments in Low-Income Housing Tax Credits**

Not applicable.

**L. Restricted Assets**

No significant change.

**M. Working Capital Finance Investments**

Not applicable.

**N. Offsetting and Netting of Assets and Liabilities**

The Company had no netted assets and liabilities at September 30, 2019.

STATEMENT AS OF SEPTEMBER 30, 2019 OF THE Compcare Health Services Insurance Corporation  
NOTES TO FINANCIAL STATEMENTS

**O. Structured Notes**

Not applicable.

**P. 5GI Securities**

The Company has no 5GI Securities as of September 30, 2019.

**Q. Short Sales**

The Company did not have any short sales at September 30, 2019.

**R. Prepayment Penalty and Acceleration Fees**

	General Account
(1) Number of CUSIPs	2
(2) Aggregate Amount of Investment Income \$	32,325

**6. Joint Ventures, Partnerships and Limited Liability Companies**

Not applicable.

**7. Investment Income**

No significant change.

**8. Derivative Instruments**

Not applicable.

**9. Income Taxes**

No significant change.

**10. Information Concerning Parent, Subsidiaries, Affiliates and Other Related Parties**

**A. Nature of the Relationship**

No significant change.

**B. Significant Transactions for the Period**

The following significant transactions took place between the Company and its affiliates:

The Board of Directors of the Company declared an extraordinary dividend in the amount of \$40,000,000 on August 14, 2019. The Department approved this dividend on September 13, 2019. The Company paid the dividend to its parent company, Blue Cross Blue Shield of Wisconsin, on September 16, 2019.

**C. Intercompany Management and Service Arrangements**

The Company amended the administrative services agreement discussed in Note 10F. There were no other amendments as of September 30, 2019.

**D. Amounts Due to or from Related Parties**

At September 30, 2019, the Company reported no amounts due from affiliates and \$50,196,698 due to affiliates. The payable balance represents intercompany transactions that will be settled in accordance with the settlement terms of the intercompany agreement.

STATEMENT AS OF SEPTEMBER 30, 2019 OF THE Compcare Health Services Insurance Corporation  
NOTES TO FINANCIAL STATEMENTS

**E. Guarantees or Contingencies for Related Parties**

No significant change.

**F. Management and Service Contracts and Cost Sharing Arrangements**

The Company has entered into administrative services agreements with its affiliated companies. Pursuant to these agreements, various administrative, management and support services are provided to or provided by the Company. The costs and expenses related to these administrative management and support services are allocated to or allocated by the Company in an amount equal to the direct and indirect costs and expenses incurred in providing these services. Costs include expenses such as salaries, employee benefits, communications, advertising, consulting services, rent, utilities, billing, accounting, underwriting, and product development, which support the Company's operations. These costs are allocated based on various utilization statistics.

Effective January 1, 2019, the Company amended its agreements by adding pharmacy benefits management services.

**G. - O.**

No significant change.

**11. Debt**

Not applicable.

**12. Retirement Plans, Deferred Compensation, Postemployment Benefits and Compensated Absences and Other Postretirement Benefit Plans**

**A. Defined Benefit Plan**

Not applicable.

**B.** Not applicable.

**C.** Not applicable.

**D.** Not applicable.

**E. Defined Contribution Plans**

Not applicable.

**F. Multiemployer Plans**

The Company does not participate in a multiemployer plan.

**G. Consolidated/Holding Company Plans**

No significant change.

**H. Post Employment Benefits and Compensated Absences**

Not applicable.

**I. Impact of Medicare Modernization Act on Postretirement Benefits (INT 04-17)**

Not applicable.



STATEMENT AS OF SEPTEMBER 30, 2019 OF THE Compcare Health Services Insurance Corporation  
NOTES TO FINANCIAL STATEMENTS

**13. Capital and Surplus, Shareholders' Dividend Restrictions and Quasi-Reorganizations**

**(1) - (8)**

No significant change.

**(9) Changes in Special Surplus Funds**

The change in balances of special surplus funds from the prior year are due to changes in the amounts segregated for the estimated Affordable Care Act ("ACA") health insurer fee. The annual fee under section 9010 of the ACA was suspended for 2019, therefore no surplus was segregated as of December 31, 2018.

**(10) - (13)**

No significant change.

**14. Liabilities, Contingencies and Assessments**

No significant change.

**15. Leases**

Not applicable.

**16. Information About Financial Instruments With Off-Balance Sheet Risk and Financial Instruments With Concentrations of Credit Risk**

Not applicable.

**17. Sale, Transfer and Servicing of Financial Assets and Extinguishments of Liabilities**

**A. Transfers of Receivables Reported as Sales**

Not applicable.

**B. Transfer and Servicing of Financial Assets**

(1) No significant change.

(2) - (7) Not applicable.

**C. Wash Sales**

(1) In the course of the Company's asset management, securities may be sold and reacquired within 30 days of the sale date to enhance the yield on the investments.

(2) At September 30, 2019, there were no wash sales involving securities with an NAIC designation of 3 or below or unrated.

**18. Gain or Loss to the Reporting Entity from Uninsured Plans and the Uninsured Portion of Partially Insured Plans**

**A. Administrative Services Only Plans**

No significant change.

**B. Administrative Services Contract Plans**

No significant change.

STATEMENT AS OF SEPTEMBER 30, 2019 OF THE Compcare Health Services Insurance Corporation  
NOTES TO FINANCIAL STATEMENTS

**C. Medicare or Other Similarly Structured Cost-Based Reimbursement Contract**

No significant change.

**19. Direct Premium Written/Produced by Managing General Agents/Third Party Administrators**

Not applicable.

**20. Fair Value Measurements**

**A.**

(1) Fair Value Measurement at Reporting Date

Description for each class of asset or liability	(Level 1)	(Level 2)	(Level 3)	Net Asset Value ("NAV")	Total
a. Assets at fair value					
Bonds					
Industrial and misc	\$ —	\$ 1,845,736	\$ —	\$ —	\$ 1,845,736
Total bonds	\$ —	\$ 1,845,736	\$ —	\$ —	\$ 1,845,736
Total assets at fair value/NAV	\$ —	\$ 1,845,736	\$ —	\$ —	\$ 1,845,736

(2) Fair Value Measurement in (Level 3) of the Fair Value Hierarchy

There are no investments in Level 3 as of September 30, 2019.

(3) The Company's policy is to recognize transfers between Levels, if any, as of the beginning of the reporting period.

(4) Fair values of bonds are based on quoted market prices, where available. These fair values are obtained primarily from third party pricing services, which generally use Level 1 or Level 2 inputs, for the determination of fair value to facilitate fair value measurements and disclosures. Level 2 securities primarily include United States government securities, corporate securities, securities from states, municipalities and political subdivisions, mortgage-backed securities and certain other asset-backed securities. For securities not actively traded, the pricing services may use quoted market prices of comparable instruments or discounted cash flow analyses, incorporating inputs that are currently observable in the markets for similar securities. Inputs that are often used in the valuation methodologies include, but are not limited to, broker quotes, benchmark yields, credit spreads, default rates and prepayment speeds. The Company has controls in place to review the pricing services' qualifications and procedures used to determine fair values. In addition, the Company periodically reviews the pricing services' pricing methodologies, data sources and pricing inputs to ensure the fair values obtained are reasonable.

There have been no significant changes in the valuation techniques during the current period.

**B. Fair Value Measurements Under Other Accounting Pronouncements**

Not applicable.



STATEMENT AS OF SEPTEMBER 30, 2019 OF THE Compcare Health Services Insurance Corporation  
NOTES TO FINANCIAL STATEMENTS

**C. Financial Instruments**

Type of Financial Instrument	Aggregate Fair Value	Admitted Assets	(Level 1)	(Level 2)	(Level 3)	Net Asset Value ("NAV")	Not Practicable (Carrying Value)
Bonds	\$ 323,202,768	\$ 314,047,790	\$ —	\$ 323,202,768	\$ —	\$ —	\$ —
Cash equivalents	11,998,920	11,998,680	—	11,998,920	—	—	—
Securities lending collateral asset	18,456,388	18,452,582	—	18,456,388	—	—	—

**D. Not Practicable to Estimate Fair Value**

There are no financial instruments that were not practicable to estimate at fair value.

**E. Investments Measured at Net Asset Value**

The Company has no investments measured at net asset value.

**21. Other Items**

The Company receives payments under its Medicaid contract with the Wisconsin Department of Health Services called hospital assessment payments. Under state law, these payments are remitted to hospitals who provide services to Medicaid members. Hospital assessment payments in the amount of \$39,843,508 at September 30, 2019 were received by the Company.

**22. Events Subsequent**

Subsequent events have been considered through November 11, 2019 for the statutory statement issued on November 12, 2019. There were no events occurring subsequent to September 30, 2019 requiring recognition or disclosure.

**23. Reinsurance**

No significant change.

**24. Retrospectively Rated Contracts & Contracts Subject to Redetermination**

**A. - D.**

No significant change.

STATEMENT AS OF SEPTEMBER 30, 2019 OF THE Compcare Health Services Insurance Corporation  
NOTES TO FINANCIAL STATEMENTS

**E. Risk Sharing Provisions of the Affordable Care Act ("ACA")**

(1) Did the reporting entity write accident and health insurance premium that is subject to the Affordable Care Act risk sharing provisions (YES/NO)?	<u>Yes</u>
(2) Impact of Risk-Sharing Provisions of the Affordable Care Act on Admitted Assets, Liabilities and Revenue for the Current Year	
a. Permanent ACA Risk Adjustment Program Assets	
Assets	
1. Premium adjustments receivable due to ACA Risk Adjustment (including high risk pool payments)	\$ 6,316,867
Liabilities	
2. Risk adjustment user fees payable for ACA Risk Adjustment	\$ 21,919
3. Premium adjustments payable due to ACA Risk Adjustment (including high risk pool premiums)	\$ 515,811
Operations (Revenue & Expense)	
4. Reported as revenue in premium for accident and health contracts (written/collected) due to ACA Risk Adjustment	\$ 4,519,721
5. Reported in expenses as ACA risk adjustment user fees (incurred/paid)	\$ 21,999
b. Transitional ACA Reinsurance Program	
Assets	
1. Amounts recoverable for claims paid due to ACA Reinsurance	\$ —
2. Amounts recoverable for claims unpaid due to ACA Reinsurance (contra liability)	\$ —
3. Amounts receivable relating to uninsured plans for contributions for ACA Reinsurance	\$ —
Liabilities	
4. Liabilities for contributions payable due to ACA Reinsurance - not reported as ceded premium	\$ —
5. Ceded reinsurance premiums payable due to ACA Reinsurance	\$ —
6. Liability for amounts held under uninsured plans contributions for ACA Reinsurance	\$ —
Operations (Revenue & Expense)	
7. Ceded reinsurance premiums due to ACA Reinsurance	\$ —
8. Reinsurance recoveries (income statement) due to ACA Reinsurance payments or expected payments	\$ 11,112
9. ACA Reinsurance contributions - not reported as ceded premium	\$ —
c. Temporary ACA Risk Corridors Program	
Assets	
1. Accrued retrospective premium due to ACA Risk Corridors	\$ —
Liabilities	
2. Reserve for rate credits or policy experience rating refunds due to ACA Risk Corridors	\$ —
Operations (Revenue & Expense)	
3. Effect of ACA Risk Corridors on net premium income (paid/received)	\$ —
4. Effect of ACA Risk Corridors on change in reserves for rate credits	\$ —

Line items where the amount is zero is due to no balance and/or no activity as of the reporting date.

STATEMENT AS OF SEPTEMBER 30, 2019 OF THE Compcare Health Services Insurance Corporation  
**NOTES TO FINANCIAL STATEMENTS**

(3) Roll-forward of prior year ACA risk-sharing provisions for the following asset (gross of any nonadmission) and liability balances, along with the reasons for adjustments to prior year balance.

	Accrued During the Prior Year on Business Written Before December 31 of the Prior Year		Received or Paid as of the Current Year on Business Written Before December 31 of the Prior Year		Differences		Adjustments		Ref	Unsettled Balances as of the Reporting Date	
	1	2	3	4	Prior Year Accrued Less Payments (Col 1 - 3)	Prior Year Accrued Less Payments (Col 2 - 4)	To Prior Year Balances	To Prior Year Balances		Cumulative Balance from Prior Years (Col 1 - 3 + 7)	Cumulative Balance from Prior Years (Col 2 - 4 + 8)
	Receivable	(Payable)	Receivable	(Payable)	Receivable	(Payable)	Receivable	(Payable)		Receivable	(Payable)
<b>a. Permanent ACA Risk Adjustment Program</b>											
1. Premium adjustments receivable (including high risk pool payments)	\$ 3,318,774	\$ —	\$ 1,998,515	\$ —	\$ 1,320,259	\$ —	\$ 1,336,129	\$ —	A	\$ 2,656,388	\$ —
2. Premium adjustments (payable) (including high risk pool premiums)	\$ —	\$ 283,265	\$ —	\$ —	\$ —	\$ 283,265	\$ —	\$ (283,265)	B	\$ —	\$ —
3. Subtotal ACA Permanent Risk Adjustment Program	\$ 3,318,774	\$ 283,265	\$ 1,998,515	\$ —	\$ 1,320,259	\$ 283,265	\$ 1,336,129	\$ (283,265)		\$ 2,656,388	\$ —
<b>b. Transitional ACA Reinsurance Program</b>											
1. Amounts recoverable for claims paid	\$ 21,116	\$ —	\$ 21,116	\$ —	\$ —	\$ —	\$ —	\$ —	C	\$ —	\$ —
2. Amounts recoverable for claims unpaid (contra liability)	\$ —	\$ —	\$ —	\$ —	\$ —	\$ —	\$ —	\$ —	D	\$ —	\$ —
3. Amounts receivable relating to uninsured plans	\$ —	\$ —	\$ —	\$ —	\$ —	\$ —	\$ —	\$ —	E	\$ —	\$ —
4. Liabilities for contributions payable due to ACA Reinsurance - not reported as ceded premium	\$ —	\$ —	\$ —	\$ —	\$ —	\$ —	\$ —	\$ —	F	\$ —	\$ —
5. Ceded reinsurance premiums payable	\$ —	\$ —	\$ —	\$ —	\$ —	\$ —	\$ —	\$ —	G	\$ —	\$ —
6. Liability for amounts held under uninsured plans	\$ —	\$ —	\$ —	\$ —	\$ —	\$ —	\$ —	\$ —	H	\$ —	\$ —
7. Subtotal ACA Transitional Reinsurance Program	\$ 21,116	\$ —	\$ 21,116	\$ —	\$ —	\$ —	\$ —	\$ —		\$ —	\$ —
<b>c. Temporary ACA Risk Corridors Program</b>											
1. Accrued retrospective premium	\$ —	\$ —	\$ —	\$ —	\$ —	\$ —	\$ —	\$ —	I	\$ —	\$ —
2. Reserve for rate credits or policy experience rating refunds	\$ —	\$ —	\$ —	\$ —	\$ —	\$ —	\$ —	\$ —	J	\$ —	\$ —
3. Subtotal ACA Risk Corridors Program	\$ —	\$ —	\$ —	\$ —	\$ —	\$ —	\$ —	\$ —		\$ —	\$ —
<b>d. Total for ACA Risk Sharing Provisions</b>	\$ 3,339,890	\$ 283,265	\$ 2,019,631	\$ —	\$ 1,320,259	\$ 283,265	\$ 1,336,129	\$ (283,265)		\$ 2,656,388	\$ —

Explanations of Adjustments

- A Adjustments were made to reflect the ending balance in the Centers for Medicare & Medicaid Services "Summary Report on Permanent Risk Adjustment Transfers for the 2018 Benefit Year."
- B Adjustments were made to reflect the ending balance in the Centers for Medicare & Medicaid Services "Summary Report on Permanent Risk Adjustment Transfers for the 2018 Benefit Year."
- C Not applicable.
- D Not applicable.
- E Not applicable.
- F Not applicable.
- G Not applicable.
- H Not applicable.
- I Not applicable.
- J Not applicable.

STATEMENT AS OF SEPTEMBER 30, 2019 OF THE Compcare Health Services Insurance Corporation  
**NOTES TO FINANCIAL STATEMENTS**

**(4) Roll-Forward of Risk Corridors Asset and Liability Balances by Program Benefit Year.**

Risk Corridors Program Year	Accrued During the Prior Year on Business Written Before December 31 of the Prior Year		Received or Paid as of the Current Year on Business Written Before December 31 of the Prior Year		Differences		Adjustments		Ref	Unsettled Balances as of the Reporting Date	
					Prior Year Accrued Less Payments (Col 1 - 3)	Prior Year Accrued Less Payments (Col 2 - 4)	To Prior Year Balances	To Prior Year Balances		Cumulative Balance from Prior Years (Col 1 - 3 + 7)	Cumulative Balance from Prior Years (Col 2 - 4 + 8)
	1	2	3	4	5	6	7	8	9	10	
	Receivable	(Payable)	Receivable	(Payable)	Receivable	(Payable)	Receivable	(Payable)		Receivable	(Payable)
a. 2014											
1. Accrued retrospective premium	\$ —	\$ —	\$ —	\$ —	\$ —	\$ —	\$ —	\$ —	A	\$ —	\$ —
2. Reserve for rate credits for policy experience rating refunds	\$ —	\$ —	\$ —	\$ —	\$ —	\$ —	\$ —	\$ —	B	\$ —	\$ —
b. 2015											
1. Accrued retrospective premium	\$ —	\$ —	\$ —	\$ —	\$ —	\$ —	\$ —	\$ —	C	\$ —	\$ —
2. Reserve for rate credits for policy experience rating refunds	\$ —	\$ —	\$ —	\$ —	\$ —	\$ —	\$ —	\$ —	D	\$ —	\$ —
c. 2016											
1. Accrued retrospective premium	\$ —	\$ —	\$ —	\$ —	\$ —	\$ —	\$ —	\$ —	E	\$ —	\$ —
2. Reserve for rate credits for policy experience rating refunds	\$ —	\$ —	\$ —	\$ —	\$ —	\$ —	\$ —	\$ —	F	\$ —	\$ —
d. Total for Risk Corridors	\$ —	\$ —	\$ —	\$ —	\$ —	\$ —	\$ —	\$ —		\$ —	\$ —

Explanations of adjustments

- A Not applicable.
- B Not applicable.
- C Not applicable.
- D Not applicable.
- E Not applicable.
- F Not applicable.

24E(4)d (Columns 1 through 10) should equal 24E(3)c3 (Column 1 through 10 respectively)

**(5) ACA Risk Corridors Receivable as of Reporting Date.**

Risk Corridors Program Year	1 Estimated Amount to be Filed or Final Amount Filed with CMS	2 Non-Accrued Amounts for Impairment or Other Reasons	3 Amounts received from CMS	4 Asset Balance (Gross of Non-admissions) (1 - 2 - 3)	5 Non-admitted Amount	6 Net Admitted Asset (4 - 5)
a. 2014	\$ 4,931,489	\$ 4,105,689	\$ 825,800	\$ —	\$ —	\$ —
b. 2015	—	—	—	—	—	—
c. 2016	—	—	—	—	—	—
d. Total (a + b + c)	\$ 4,931,489	\$ 4,105,689	\$ 825,800	\$ —	\$ —	\$ —

24E(5)d (Columns 4) should equal 24E(3)c1 (Column 9)

24E(5)d (Columns 6) should equal 24E(2)e1

**25. Change in Incurred Claims and Claim Adjustment Expenses**

A. The estimated cost of claims and claim adjustment expense attributable to insured events of prior years decreased by \$6,863,545 during 2019. This is approximately 8.9% of unpaid claims and claim adjustment expenses of \$77,406,396 as of December 31, 2018. The redundancy reflects the decreases in estimated claims and claims adjustment expenses as a result of claims payment during the year, and as additional information is received regarding claims incurred prior to 2019. Recent claim development trends are also taken into account in evaluating the overall adequacy of unpaid claims and unpaid claim adjustment expense.

B. There were no significant changes in methodologies and assumptions used in calculating the liability for unpaid losses and loss adjustment expenses.

**26. Intercompany Pooling Arrangements**

Not applicable.

STATEMENT AS OF SEPTEMBER 30, 2019 OF THE Compcare Health Services Insurance Corporation  
NOTES TO FINANCIAL STATEMENTS

**27. Structured Settlements**

Not applicable.

**28. Health Care Receivables**

No significant change.

**29. Participating Policies**

Not applicable.

**30. Premium Deficiency Reserves**

The Company did not record any premium deficiency reserves at September 30, 2019.

**31. Anticipated Salvage and Subrogation**

No significant change.

# GENERAL INTERROGATORIES

## PART 1 - COMMON INTERROGATORIES

### GENERAL

- 1.1 Did the reporting entity experience any material transactions requiring the filing of Disclosure of Material Transactions with the State of Domicile, as required by the Model Act? ..... Yes [ X ] No [ ]
- 1.2 If yes, has the report been filed with the domiciliary state? ..... Yes [ X ] No [ ]
- 2.1 Has any change been made during the year of this statement in the charter, by-laws, articles of incorporation, or deed of settlement of the reporting entity? ..... Yes [ ] No [ X ]
- 2.2 If yes, date of change: .....
- 3.1 Is the reporting entity a member of an Insurance Holding Company System consisting of two or more affiliated persons, one or more of which is an insurer? ..... Yes [ X ] No [ ]  
If yes, complete Schedule Y, Parts 1 and 1A.
- 3.2 Have there been any substantial changes in the organizational chart since the prior quarter end? ..... Yes [ ] No [ X ]
- 3.3 If the response to 3.2 is yes, provide a brief description of those changes.
- 3.4 Is the reporting entity publicly traded or a member of a publicly traded group? ..... Yes [ X ] No [ ]
- 3.5 If the response to 3.4 is yes, provide the CIK (Central Index Key) code issued by the SEC for the entity/group. .... 0001156039
- 4.1 Has the reporting entity been a party to a merger or consolidation during the period covered by this statement? ..... Yes [ ] No [ X ]  
If yes, complete and file the merger history data file with the NAIC for the annual filing corresponding to this period.
- 4.2 If yes, provide the name of the entity, NAIC Company Code, and state of domicile (use two letter state abbreviation) for any entity that has ceased to exist as a result of the merger or consolidation.

1 Name of Entity	2 NAIC Company Code	3 State of Domicile

5. If the reporting entity is subject to a management agreement, including third-party administrator(s), managing general agent(s), attorney-in-fact, or similar agreement, have there been any significant changes regarding the terms of the agreement or principals involved? ..... Yes [ X ] No [ ] N/A [ ]  
If yes, attach an explanation.  
See Note 10C and 10F.
- 6.1 State as of what date the latest financial examination of the reporting entity was made or is being made. .... 12/31/2017
- 6.2 State the as of date that the latest financial examination report became available from either the state of domicile or the reporting entity. This date should be the date of the examined balance sheet and not the date the report was completed or released. .... 12/31/2017
- 6.3 State as of what date the latest financial examination report became available to other states or the public from either the state of domicile or the reporting entity. This is the release date or completion date of the examination report and not the date of the examination (balance sheet date). .... 06/25/2019
- 6.4 By what department or departments?  
State of Wisconsin Office of the Commissioner of Insurance
- 6.5 Have all financial statement adjustments within the latest financial examination report been accounted for in a subsequent financial statement filed with Departments? ..... Yes [ ] No [ ] N/A [ X ]
- 6.6 Have all of the recommendations within the latest financial examination report been complied with? ..... Yes [ X ] No [ ] N/A [ ]
- 7.1 Has this reporting entity had any Certificates of Authority, licenses or registrations (including corporate registration, if applicable) suspended or revoked by any governmental entity during the reporting period? ..... Yes [ ] No [ X ]
- 7.2 If yes, give full information:
- 8.1 Is the company a subsidiary of a bank holding company regulated by the Federal Reserve Board? ..... Yes [ ] No [ X ]
- 8.2 If response to 8.1 is yes, please identify the name of the bank holding company.
- 8.3 Is the company affiliated with one or more banks, thrifts or securities firms? ..... Yes [ ] No [ X ]
- 8.4 If response to 8.3 is yes, please provide below the names and location (city and state of the main office) of any affiliates regulated by a federal regulatory services agency [i.e. the Federal Reserve Board (FRB), the Office of the Comptroller of the Currency (OCC), the Federal Deposit Insurance Corporation (FDIC) and the Securities Exchange Commission (SEC)] and identify the affiliate's primary federal regulator.

1 Affiliate Name	2 Location (City, State)	3 FRB	4 OCC	5 FDIC	6 SEC

## GENERAL INTERROGATORIES

- 9.1 Are the senior officers (principal executive officer, principal financial officer, principal accounting officer or controller, or persons performing similar functions) of the reporting entity subject to a code of ethics, which includes the following standards? ..... Yes [  ] No [  ]
- (a) Honest and ethical conduct, including the ethical handling of actual or apparent conflicts of interest between personal and professional relationships;
- (b) Full, fair, accurate, timely and understandable disclosure in the periodic reports required to be filed by the reporting entity;
- (c) Compliance with applicable governmental laws, rules and regulations;
- (d) The prompt internal reporting of violations to an appropriate person or persons identified in the code; and
- (e) Accountability for adherence to the code.
- 9.11 If the response to 9.1 is No, please explain:
- 9.2 Has the code of ethics for senior managers been amended? ..... Yes [  ] No [  ]
- 9.21 If the response to 9.2 is Yes, provide information related to amendment(s).
- 9.3 Have any provisions of the code of ethics been waived for any of the specified officers? ..... Yes [  ] No [  ]
- 9.31 If the response to 9.3 is Yes, provide the nature of any waiver(s).

### FINANCIAL

- 10.1 Does the reporting entity report any amounts due from parent, subsidiaries or affiliates on Page 2 of this statement? ..... Yes [  ] No [  ]
- 10.2 If yes, indicate any amounts receivable from parent included in the Page 2 amount: ..... \$ .....0

### INVESTMENT

- 11.1 Were any of the stocks, bonds, or other assets of the reporting entity loaned, placed under option agreement, or otherwise made available for use by another person? (Exclude securities under securities lending agreements.) ..... Yes [  ] No [  ]
- 11.2 If yes, give full and complete information relating thereto:
12. Amount of real estate and mortgages held in other invested assets in Schedule BA: ..... \$ .....
13. Amount of real estate and mortgages held in short-term investments: ..... \$ .....
- 14.1 Does the reporting entity have any investments in parent, subsidiaries and affiliates? ..... Yes [  ] No [  ]
- 14.2 If yes, please complete the following:
- |   | 1<br>Prior Year-End<br>Book/Adjusted<br>Carrying Value | 2<br>Current Quarter<br>Book/Adjusted<br>Carrying Value |
|---|--|---|
| 14.21 Bonds .....   | \$ .....0  | \$ .....  |
| 14.22 Preferred Stock .....   | \$ .....0  | \$ .....  |
| 14.23 Common Stock .....  | \$ .....0  | \$ .....  |
| 14.24 Short-Term Investments .....  | \$ .....0  | \$ .....  |
| 14.25 Mortgage Loans on Real Estate .....   | \$ .....0  | \$ .....  |
| 14.26 All Other .....   | \$ .....3,944,984                                      | \$ .....16,481,175                                      |
| 14.27 Total Investment in Parent, Subsidiaries and Affiliates (Subtotal Lines 14.21 to 14.26) ..... | \$ .....3,944,984                                      | \$ .....16,481,175                                      |
| 14.28 Total Investment in Parent included in Lines 14.21 to 14.26 above .....                       | \$ .....   | \$ .....  |
- 15.1 Has the reporting entity entered into any hedging transactions reported on Schedule DB? ..... Yes [  ] No [  ]
- 15.2 If yes, has a comprehensive description of the hedging program been made available to the domiciliary state? ..... Yes [  ] No [  ]
- If no, attach a description with this statement.
16. For the reporting entity's security lending program, state the amount of the following as of the current statement date:
- 16.1 Total fair value of reinvested collateral assets reported on Schedule DL, Parts 1 and 2. .... \$ .....18,456,388
- 16.2 Total book adjusted/carrying value of reinvested collateral assets reported on Schedule DL, Parts 1 and 2 ..... \$ .....18,452,582
- 16.3 Total payable for securities lending reported on the liability page. .... \$ .....18,452,582

## GENERAL INTERROGATORIES

17. Excluding items in Schedule E - Part 3 - Special Deposits, real estate, mortgage loans and investments held physically in the reporting entity's offices, vaults or safety deposit boxes, were all stocks, bonds and other securities, owned throughout the current year held pursuant to a custodial agreement with a qualified bank or trust company in accordance with Section 1, III - General Examination Considerations, F. Outsourcing of Critical Functions, Custodial or Safekeeping Agreements of the NAIC Financial Condition Examiners Handbook? ..... Yes [ X ] No [ ]
- 17.1 For all agreements that comply with the requirements of the NAIC Financial Condition Examiners Handbook, complete the following:

1 Name of Custodian(s)	2 Custodian Address
JP Morgan Chase Bank, N.A .....	383 Madison Ave, New York, NY 10179 .....

- 17.2 For all agreements that do not comply with the requirements of the NAIC Financial Condition Examiners Handbook, provide the name, location and a complete explanation:

1 Name(s)	2 Location(s)	3 Complete Explanation(s)
.....	.....	.....

- 17.3 Have there been any changes, including name changes, in the custodian(s) identified in 17.1 during the current quarter? ..... Yes [ ] No [ X ]
- 17.4 If yes, give full information relating thereto:

1 Old Custodian	2 New Custodian	3 Date of Change	4 Reason
.....	.....	.....	.....

- 17.5 Investment management – Identify all investment advisors, investment managers, broker/dealers, including individuals that have the authority to make investment decisions on behalf of the reporting entity. For assets that are managed internally by employees of the reporting entity, note as such. ["...that have access to the investment accounts"; "...handle securities"]

1 Name of Firm or Individual	2 Affiliation
Anthem, Inc. ....	I.....
Robert W. Baird & Co .....	U.....
Loomis, Sayles & Company, LP .....	U.....

- 17.5097 For those firms/individuals listed in the table for Question 17.5, do any firms/individuals unaffiliated with the reporting entity (i.e. designated with a "U") manage more than 10% of the reporting entity's assets? ..... Yes [ X ] No [ ]
- 17.5098 For firms/individuals unaffiliated with the reporting entity (i.e. designated with a "U") listed in the table for Question 17.5, does the total assets under management aggregate to more than 50% of the reporting entity's assets? ..... Yes [ X ] No [ ]

- 17.6 For those firms or individuals listed in the table for 17.5 with an affiliation code of "A" (affiliated) or "U" (unaffiliated), provide the information for the table below.

1	2	3	4	5
Central Registration Depository Number	Name of Firm or Individual	Legal Entity Identifier (LEI)	Registered With	Investment Management Agreement (IMA) Filed
8158 .....	Robert W. Baird & Co .....	549300772UJHRD6L053 .....	Securities Exchange Commission .....	NO.....
105377 .....	Loomis, Sayles & Company, LP .....	J1ZPN2RX3UMN0YID1313 .....	Securities Exchange Commission .....	NO.....

- 18.1 Have all the filing requirements of the Purposes and Procedures Manual of the NAIC Investment Analysis Office been followed? ..... Yes [ X ] No [ ]
- 18.2 If no, list exceptions:

19. By self-designating 5GI securities, the reporting entity is certifying the following elements for each self-designated 5GI security:
- a. Documentation necessary to permit a full credit analysis of the security does not exist or an NAIC CRP credit rating for an FE or PL security is not available.
  - b. Issuer or obligor is current on all contracted interest and principal payments.
  - c. The insurer has an actual expectation of ultimate payment of all contracted interest and principal.
- Has the reporting entity self-designated 5GI securities? ..... Yes [ ] No [ X ]

20. By self-designating PLGI securities, the reporting entity is certifying the following elements of each self-designated PLGI security:
- a. The security was purchased prior to January 1, 2018.
  - b. The reporting entity is holding capital commensurate with the NAIC Designation reported for the security.
  - c. The NAIC Designation was derived from the credit rating assigned by an NAIC CRP in its legal capacity as a NRSRO which is shown on a current private letter rating held by the insurer and available for examination by state insurance regulators.
  - d. The reporting entity is not permitted to share this credit rating of the PL security with the SVO.
- Has the reporting entity self-designated PLGI securities? ..... Yes [ ] No [ X ]



**GENERAL INTERROGATORIES**

**PART 2 - HEALTH**

- 1. Operating Percentages:
  - 1.1 A&H loss percent .....84.0 %
  - 1.2 A&H cost containment percent .....2.9 %
  - 1.3 A&H expense percent excluding cost containment expenses .....9.3 %
- 2.1 Do you act as a custodian for health savings accounts? ..... Yes [ ] No [ X ]
- 2.2 If yes, please provide the amount of custodial funds held as of the reporting date .....\$.....
- 2.3 Do you act as an administrator for health savings accounts? ..... Yes [ ] No [ X ]
- 2.4 If yes, please provide the balance of the funds administered as of the reporting date .....\$.....
- 3. Is the reporting entity licensed or chartered, registered, qualified, eligible or writing business in at least two states? ..... Yes [ X ] No [ ]
- 3.1 If no, does the reporting entity assume reinsurance business that covers risks residing in at least one state other than the state of domicile of the reporting entity? ..... Yes [ ] No [ ]

**SCHEDULE S - CEDED REINSURANCE**

Showing All New Reinsurance Treaties - Current Year to Date

1 NAIC Company Code	2 ID Number	3 Effective Date	4 Name of Reinsurer	5 Domiciliary Jurisdiction	6 Type of Reinsurance Ceded	7 Type of Reinsurer	8 Certified Reinsurer Rating (1 through 6)	9 Effective Date of Certified Reinsurer Rating
<b>NONE</b>								

# SCHEDULE T - PREMIUMS AND OTHER CONSIDERATIONS

Current Year to Date - Allocated by States and Territories

States, etc.	1 Active Status (a)	Direct Business Only							9 Deposit-Type Contracts	
		2 Accident and Health Premiums	3 Medicare Title XVIII	4 Medicaid Title XIX	5 Federal Employees Health Benefits Program Premiums	6 Life and Annuity Premiums & Other Considerations	7 Property/Casualty Premiums	8 Total Columns 2 Through 7		
1. Alabama AL	N								0	
2. Alaska AK	N								0	
3. Arizona AZ	N								0	
4. Arkansas AR	N								0	
5. California CA	N								0	
6. Colorado CO	N								0	
7. Connecticut CT	N								0	
8. Delaware DE	N								0	
9. District of Columbia DC	N								0	
10. Florida FL	N								0	
11. Georgia GA	N								0	
12. Hawaii HI	N								0	
13. Idaho ID	N								0	
14. Illinois IL	N								0	
15. Indiana IN	N								0	
16. Iowa IA	N								0	
17. Kansas KS	N								0	
18. Kentucky KY	L	13,896	294,074,986						294,088,882	
19. Louisiana LA	N								0	
20. Maine ME	N								0	
21. Maryland MD	N								0	
22. Massachusetts MA	N								0	
23. Michigan MI	N								0	
24. Minnesota MN	N								0	
25. Mississippi MS	N								0	
26. Missouri MO	N								0	
27. Montana MT	N								0	
28. Nebraska NE	N								0	
29. Nevada NV	N								0	
30. New Hampshire NH	N								0	
31. New Jersey NJ	N								0	
32. New Mexico NM	N								0	
33. New York NY	N								0	
34. North Carolina NC	N								0	
35. North Dakota ND	N								0	
36. Ohio OH	N								0	
37. Oklahoma OK	N								0	
38. Oregon OR	N								0	
39. Pennsylvania PA	N								0	
40. Rhode Island RI	N								0	
41. South Carolina SC	N								0	
42. South Dakota SD	N								0	
43. Tennessee TN	N								0	
44. Texas TX	N								0	
45. Utah UT	N								0	
46. Vermont VT	N								0	
47. Virginia VA	N								0	
48. Washington WA	N								0	
49. West Virginia WV	N								0	
50. Wisconsin WI	L	354,190,075	88,346,039	179,907,738					622,443,852	
51. Wyoming WY	N								0	
52. American Samoa AS	N								0	
53. Guam GU	N								0	
54. Puerto Rico PR	N								0	
55. U.S. Virgin Islands VI	N								0	
56. Northern Mariana Islands MP	N								0	
57. Canada CAN	N								0	
58. Aggregate Other Aliens OT	XXX	0	0	0	0	0	0	0	0	0
59. Subtotal	XXX	354,203,970	382,421,025	179,907,738	0	0	0	916,532,733	0	
60. Reporting Entity Contributions for Employee Benefit Plans	XXX								0	
61. Totals (Direct Business)	XXX	354,203,970	382,421,025	179,907,738	0	0	0	916,532,733	0	
DETAILS OF WRITE-INS										
58001.	XXX									
58002.	XXX									
58003.	XXX									
58998. Summary of remaining write-ins for Line 58 from overflow page	XXX	0	0	0	0	0	0	0	0	0
58999. Totals (Lines 58001 through 58003 plus 58998)(Line 58 above)	XXX	0	0	0	0	0	0	0	0	0

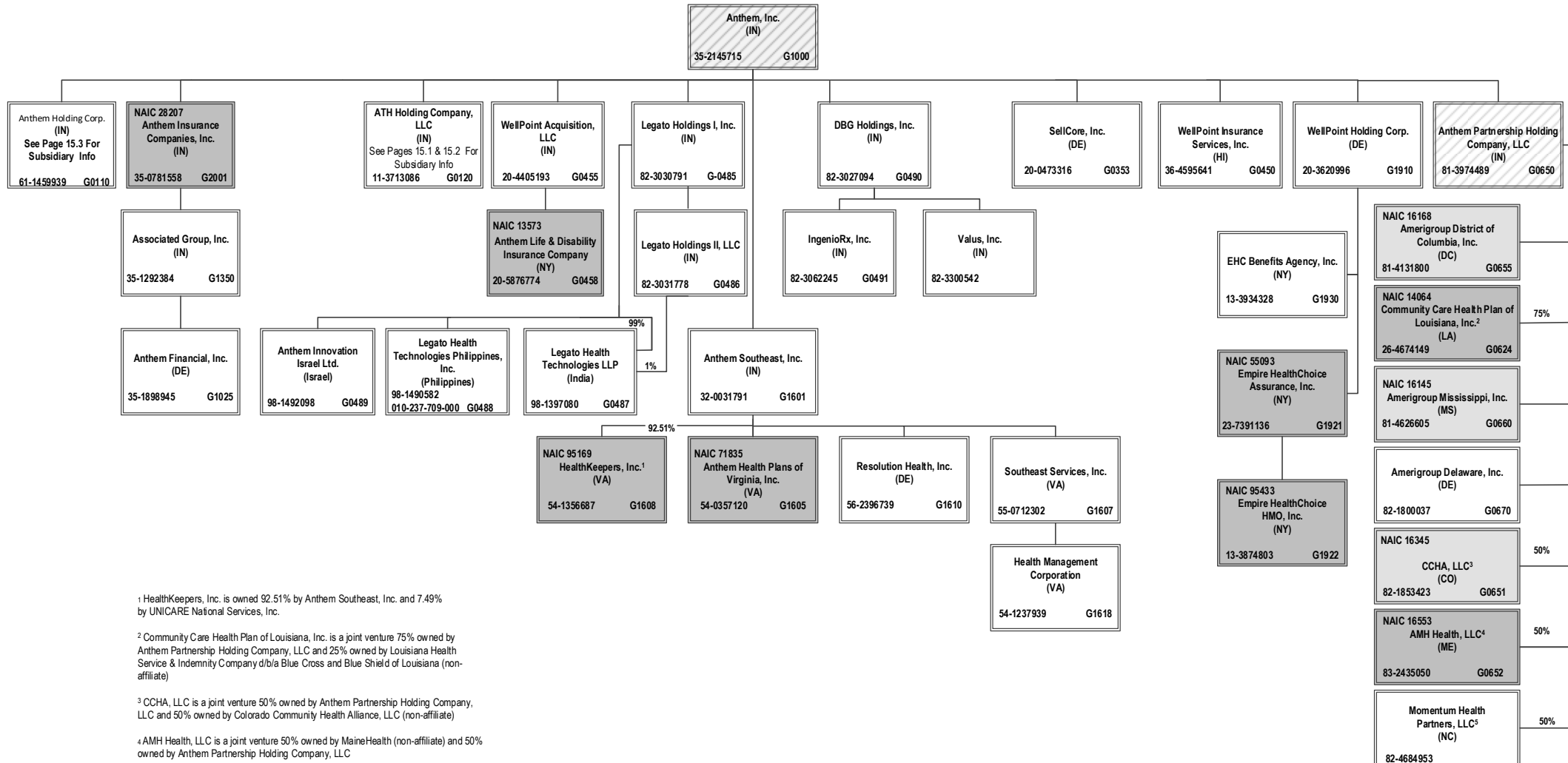
(a) Active Status Counts:

L - Licensed or Chartered - Licensed Insurance carrier or domiciled RRG..... 2      R - Registered - Non-domiciled RRGs..... 0  
 E - Eligible - Reporting entities eligible or approved to write surplus lines in the state..... 0      Q - Qualified - Qualified or accredited reinsurer..... 0  
 N - None of the above - Not allowed to write business in the state..... 55

**SCHEDULE Y – INFORMATION CONCERNING ACTIVITIES OF INSURER MEMBERS OF A HOLDING COMPANY GROUP**  
**PART 1 – ORGANIZATIONAL CHART**

BCBSA Licensee
Regulated Insurance Company
Regulated BCBSA Licensee

ALL SUBSIDIARIES 100% OWNED AND LLC'S ARE CONTROLLED BY MEMBERS UNLESS OTHERWISE NOTED



<sup>1</sup> HealthKeepers, Inc. is owned 92.51% by Anthem Southeast, Inc. and 7.49% by UNICARE National Services, Inc.

<sup>2</sup> Community Care Health Plan of Louisiana, Inc. is a joint venture 75% owned by Anthem Partnership Holding Company, LLC and 25% owned by Louisiana Health Service & Indemnity Company d/b/a Blue Cross and Blue Shield of Louisiana (non-affiliate)

<sup>3</sup> CCHA, LLC is a joint venture 50% owned by Anthem Partnership Holding Company, LLC and 50% owned by Colorado Community Health Alliance, LLC (non-affiliate)

<sup>4</sup> AMH Health, LLC is a joint venture 50% owned by MaineHealth (non-affiliate) and 50% owned by Anthem Partnership Holding Company, LLC

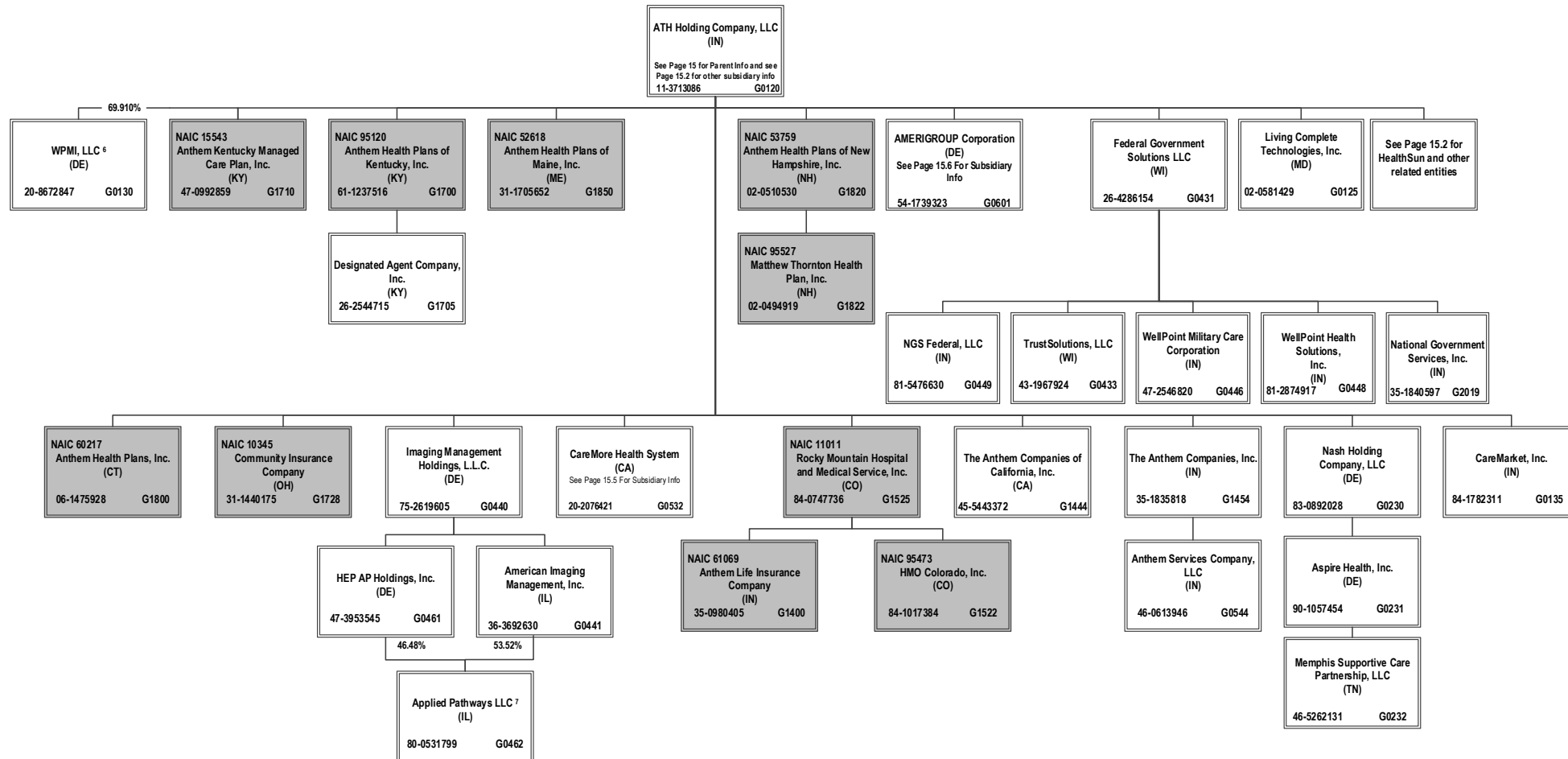
<sup>5</sup> Momentum Health Partners, LLC is a joint venture 50% owned by Anthem Partnership Holding Company, LLC and 50% owned by Blue Cross and Blue Shield of North Carolina (non-affiliate)

# SCHEDULE Y – INFORMATION CONCERNING ACTIVITIES OF INSURER MEMBERS OF A HOLDING COMPANY GROUP

## PART 1 – ORGANIZATIONAL CHART

ALL SUBSIDIARIES 100% OWNED AND LLC'S ARE CONTROLLED BY MEMBERS UNLESS OTHERWISE NOTED

BCBSA Licensee
Regulated Insurance Company
Regulated BCBSA Licensee



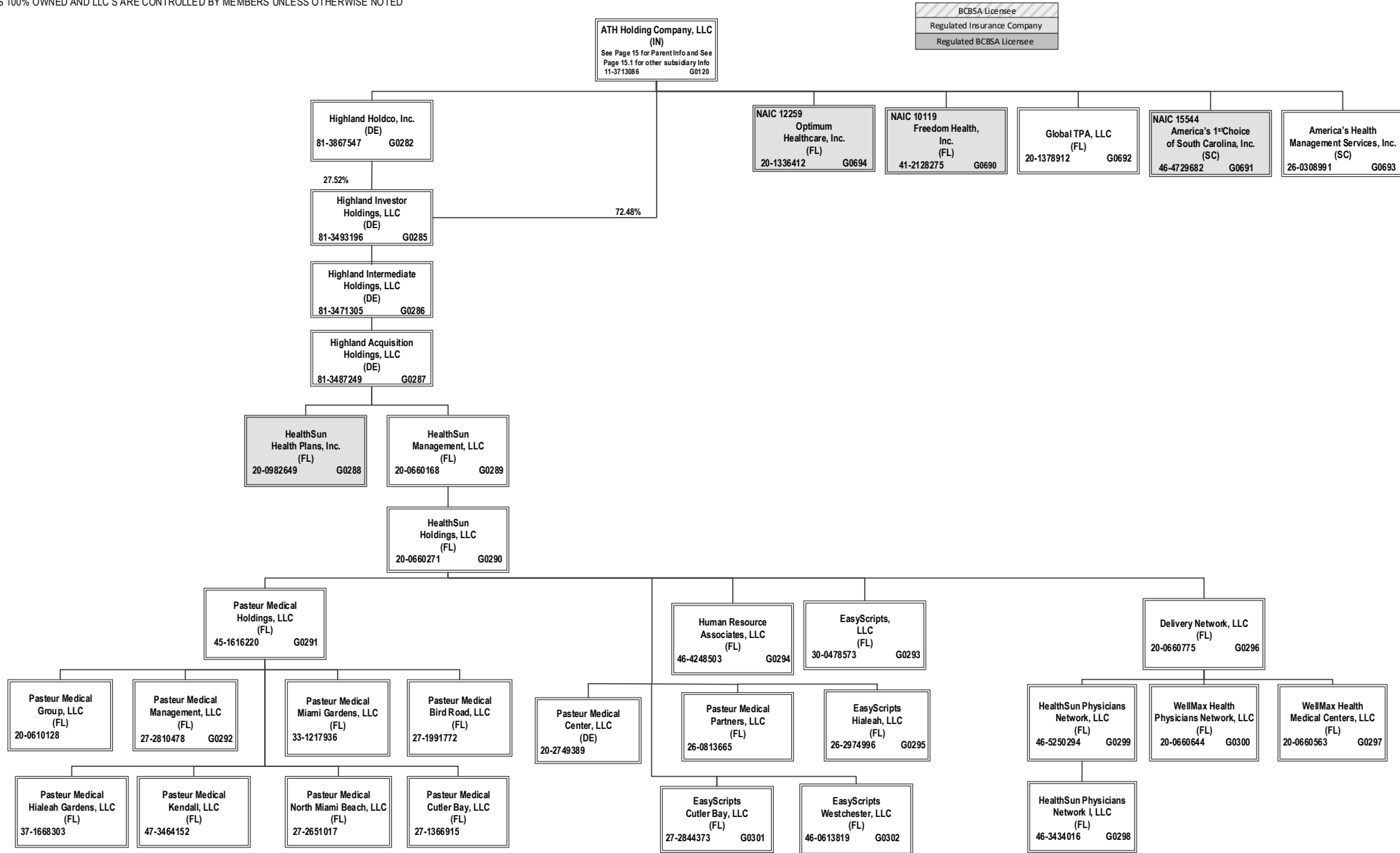
<sup>6</sup> 30.09% of WPMI, LLC is owned by unaffiliated investors

<sup>7</sup> Applied Pathways LLC is owned 53.52% by AIM and 46.48% by HEP AP Holdings, Inc.

# SCHEDULE Y – INFORMATION CONCERNING ACTIVITIES OF INSURER MEMBERS OF A HOLDING COMPANY GROUP

## PART 1 – ORGANIZATIONAL CHART

ALL SUBSIDIARIES 100% OWNED AND LLC'S ARE CONTROLLED BY MEMBERS UNLESS OTHERWISE NOTED



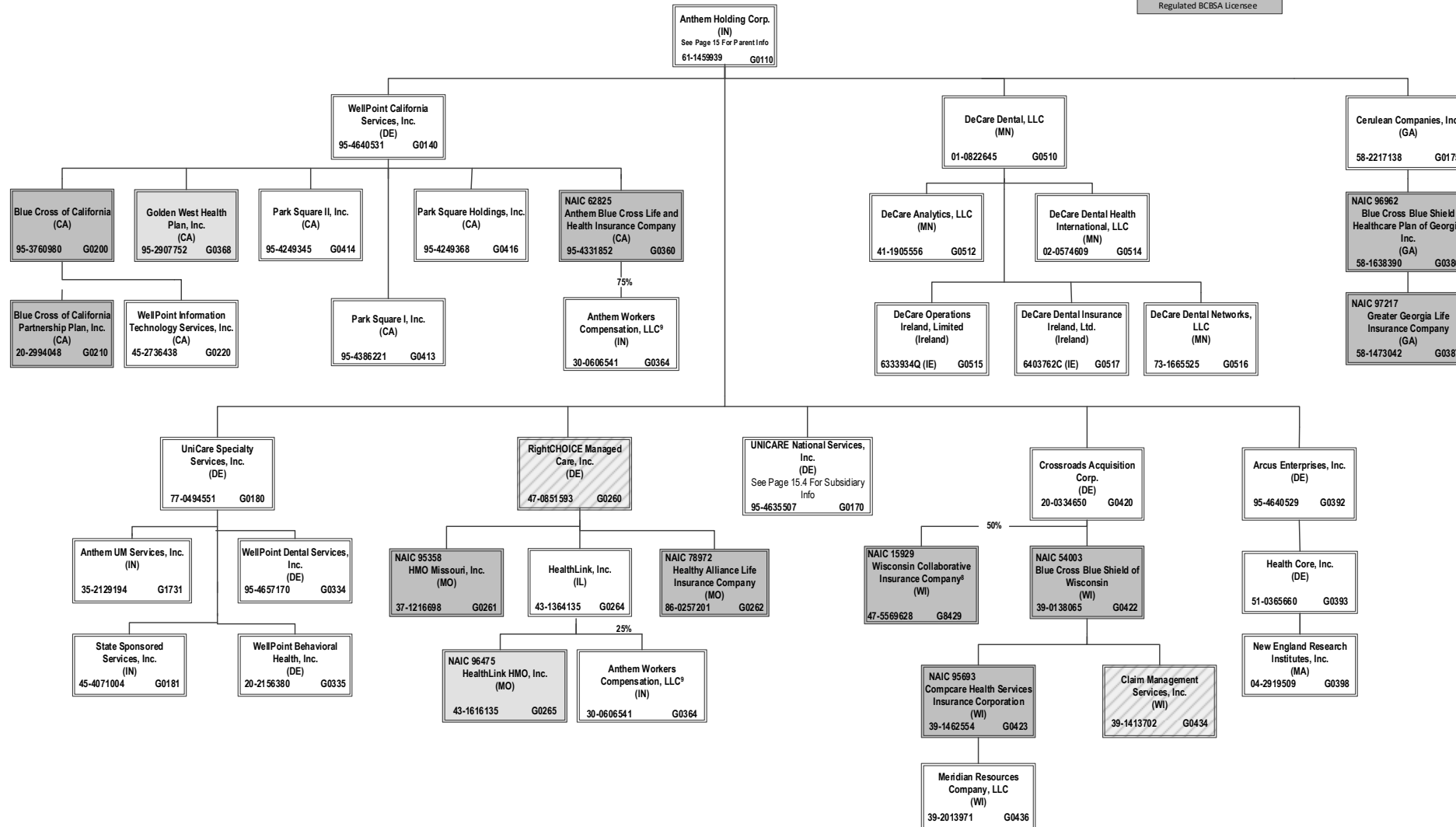
15.2

# SCHEDULE Y – INFORMATION CONCERNING ACTIVITIES OF INSURER MEMBERS OF A HOLDING COMPANY GROUP

## PART 1 – ORGANIZATIONAL CHART

ALL SUBSIDIARIES 100% OWNED AND LLC'S ARE CONTROLLED BY MEMBERS UNLESS OTHERWISE NOTED

BCBSA Licensee
Regulated Insurance Company
Regulated BCBSA Licensee



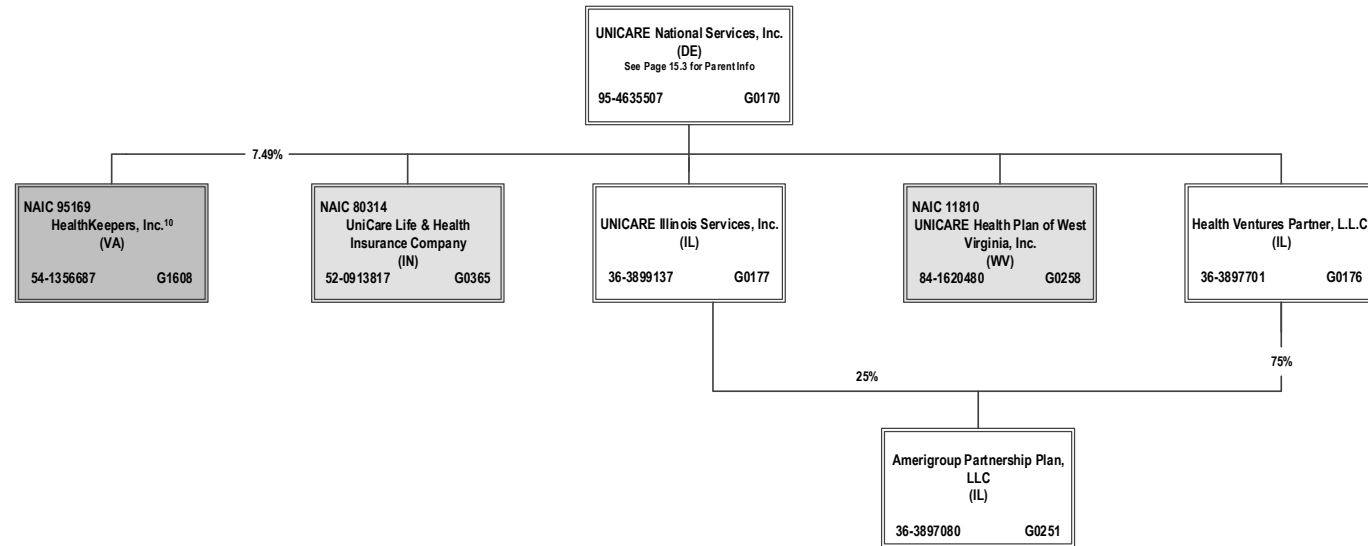
<sup>8</sup> 50% of WCIC is owned by Aurora Health Care, Inc. (non-affiliate). Not consolidated for accounting purposes.

<sup>9</sup> Anthem Workers' Compensation LLC is owned 75% by Anthem Blue Cross Life and Health Insurance Company and 25% by HealthLink, Inc.

**SCHEDULE Y – INFORMATION CONCERNING ACTIVITIES OF INSURER MEMBERS OF A HOLDING COMPANY GROUP**  
**PART 1 – ORGANIZATIONAL CHART**

ALL SUBSIDIARIES 100% OWNED AND LLC'S ARE CONTROLLED BY MEMBERS UNLESS OTHERWISE NOTED

BCBSA Licensee
Regulated Insurance Company
Regulated BCBSA Licensee



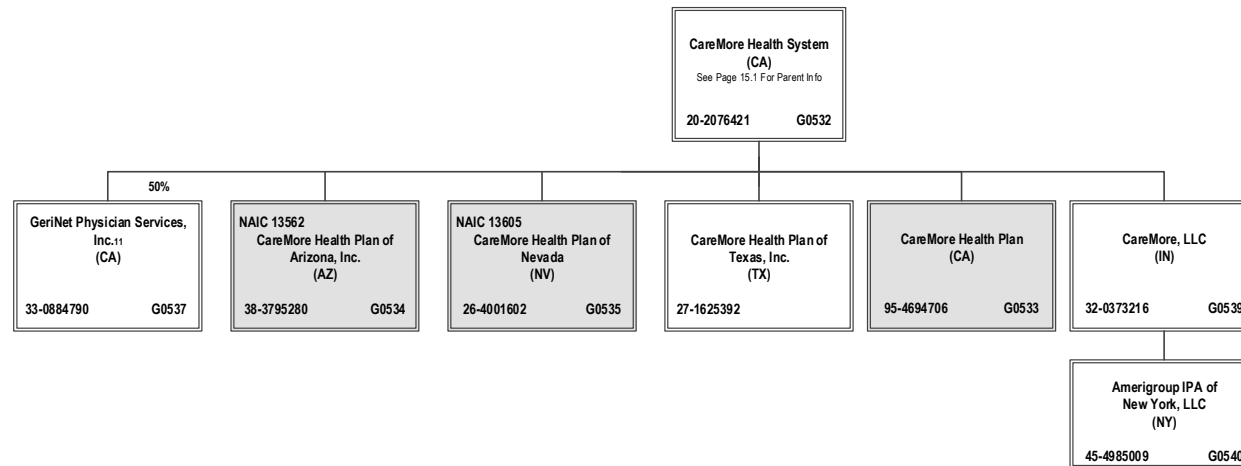
<sup>10</sup> HealthKeepers, Inc. is owned 92.51% by Anthem Southeast, Inc. and 7.49% by UNICARE National Services, Inc.



**SCHEDULE Y – INFORMATION CONCERNING ACTIVITIES OF INSURER MEMBERS OF A HOLDING COMPANY GROUP**  
**PART 1 – ORGANIZATIONAL CHART**

BCBSA Licensee
Regulated Insurance Company
Regulated BCBSA Licensee

ALL SUBSIDIARIES 100% OWNED AND LLC'S ARE CONTROLLED BY MEMBERS UNLESS OTHERWISE NOTED

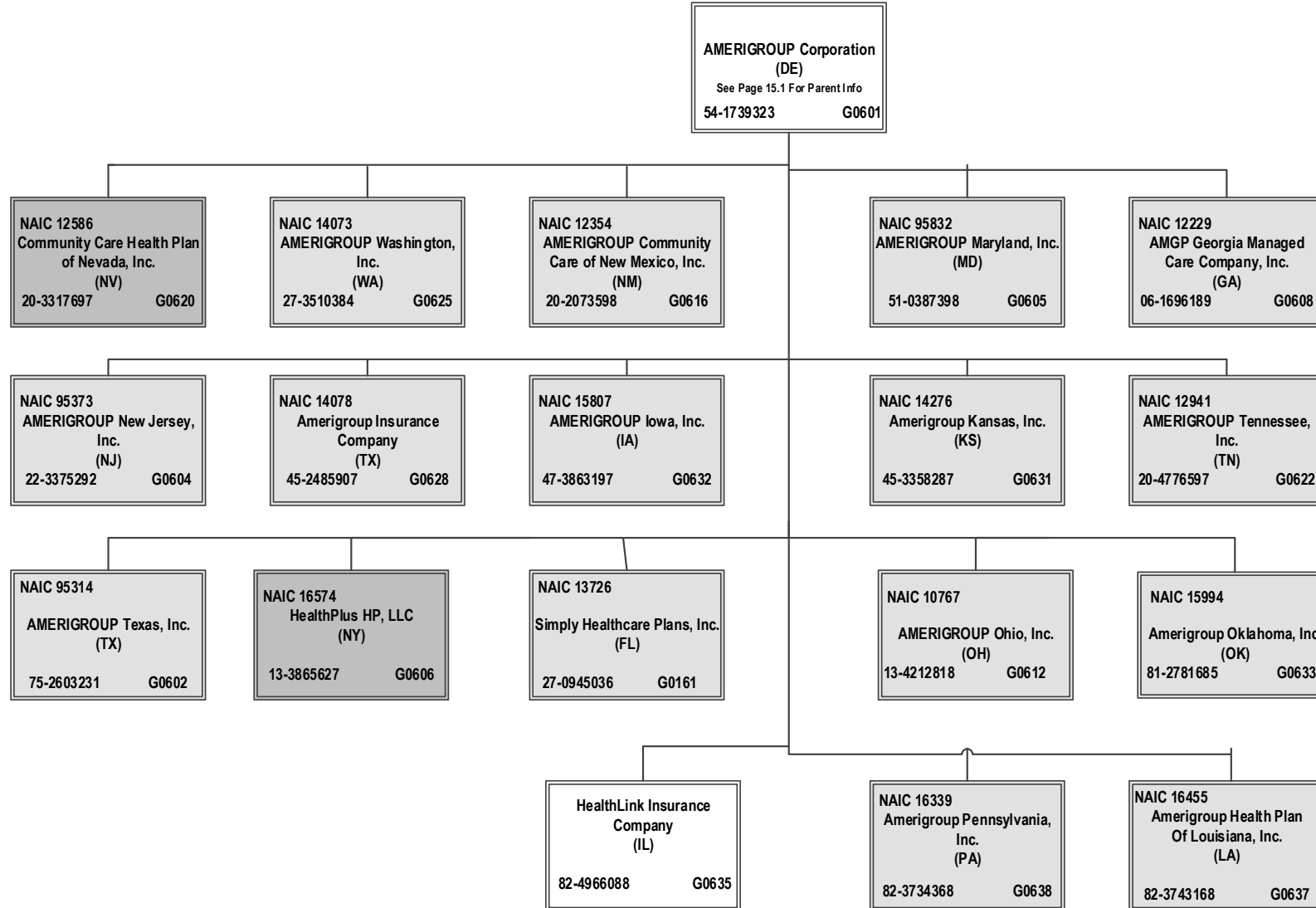


<sup>11</sup> GeriNet Physician Services, Inc. is owned 50% by CareMore Health System and 50% by Health Essentials Acquisition Corporation (non-affiliate)

**SCHEDULE Y – INFORMATION CONCERNING ACTIVITIES OF INSURER MEMBERS OF A HOLDING COMPANY GROUP**  
**PART 1 – ORGANIZATIONAL CHART**

ALL SUBSIDIARIES 100% OWNED AND LLC'S ARE CONTROLLED BY MEMBERS UNLESS OTHERWISE NOTED

BCBSA Licensee
Regulated Insurance Company
Regulated BCBSA Licensee



15.6

STATEMENT AS OF SEPTEMBER 30, 2019 OF THE Compcare Health Services Insurance Corporation

**SCHEDULE Y**  
**PART 1A - DETAIL OF INSURANCE HOLDING COMPANY SYSTEM**

1	2	3	4	5	6	7	8	9	10	11	12	13	14	15	16
Group Code	Group Name	NAIC Company Code	ID Number	Federal RSSD	CIK	Name of Securities Exchange if Publicly Traded (U.S. or International)	Names of Parent, Subsidiaries Or Affiliates	Domiciliary Location	Relationship to Reporting Entity	Directly Controlled by (Name of Entity/Person)	Type of Control (Ownership, Board, Management, Attorney-in-Fact, Influence, Other)	If Control is Ownership Provide Percentage	Ultimate Controlling Entity(ies)/Person(s)	Is an SCA Filing Required? (Y/N)	*
.0671	Anthem, Inc.		36-3692630		0001156039		American Imaging Management, Inc.	IL	NIA	Imaging Management Holdings, L.L.C.	Ownership	100.000	Anthem, Inc.	.N	
.0671	Anthem, Inc.	15544	46-4729682		0001156039		America's 1st Choice of South Carolina, Inc.	SC	IA	ATH Holding Company, LLC	Ownership	100.000	Anthem, Inc.	.N	
.0671	Anthem, Inc.		26-0308991		0001156039		America's Health Management Services, Inc.	SC	NIA	ATH Holding Company, LLC	Ownership	100.000	Anthem, Inc.	.N	
.0671	Anthem, Inc.	12354	20-2073598		0001156039		AMERIGROUP Community Care of New Mexico, Inc.	NM	IA	AMERIGROUP Corporation	Ownership	100.000	Anthem, Inc.	.N	
.0671	Anthem, Inc.		54-1739323		0001156039		AMERIGROUP Corporation	DE	NIA	ATH Holding Company, LLC	Ownership	100.000	Anthem, Inc.	.N	
.0671	Anthem, Inc.		82-1800037		0001156039		AMERIGROUP Delaware, Inc.	DE	NIA	Anthem Partnership Holding Company, LLC	Ownership	100.000	Anthem, Inc.	.N	
.0671	Anthem, Inc.	16168	81-4131800		0001156039		Amerigroup District of Columbia, Inc.	DC	IA	Anthem Partnership Holding Company, LLC	Ownership	100.000	Anthem, Inc.	.N	
.0671	Anthem, Inc.	16455	82-3743168		0001156039		Amerigroup Health Plan of Louisiana, Inc.	LA	IA	AMERIGROUP Corporation	Ownership	100.000	Anthem, Inc.	.N	
.0671	Anthem, Inc.	14078	45-2485907		0001156039		Amerigroup Insurance Company	TX	IA	AMERIGROUP Corporation	Ownership	100.000	Anthem, Inc.	.N	
.0671	Anthem, Inc.	15807	47-3863197		0001156039		AMERIGROUP Iowa, Inc.	IA	IA	AMERIGROUP Corporation	Ownership	100.000	Anthem, Inc.	.N	
.0671	Anthem, Inc.		45-4985009		0001156039		Amerigroup IPA of New York, LLC	NY	NIA	CareMore, LLC	Ownership	100.000	Anthem, Inc.	.N	
.0671	Anthem, Inc.	14276	45-3358287		0001156039		Amerigroup Kansas, Inc.	KS	IA	AMERIGROUP Corporation	Ownership	100.000	Anthem, Inc.	.N	
.0671	Anthem, Inc.	95832	51-0387398		0001156039		AMERIGROUP Maryland, Inc.	MD	IA	AMERIGROUP Corporation	Ownership	100.000	Anthem, Inc.	.N	
.0671	Anthem, Inc.	16145	81-4626605		0001156039		Amerigroup Mississippi, Inc.	MS	IA	Anthem Partnership Holding Company, LLC	Ownership	100.000	Anthem, Inc.	.N	
.0671	Anthem, Inc.	95373	22-3375292		0001156039		AMERIGROUP New Jersey, Inc.	NJ	IA	AMERIGROUP Corporation	Ownership	100.000	Anthem, Inc.	.N	
.0671	Anthem, Inc.	10767	13-4212818		0001156039		AMERIGROUP Ohio, Inc.	OH	IA	AMERIGROUP Corporation	Ownership	100.000	Anthem, Inc.	.N	
.0671	Anthem, Inc.	15994	81-2781685		0001156039		AMERIGROUP Oklahoma, Inc.	OK	IA	AMERIGROUP Corporation	Ownership	100.000	Anthem, Inc.	.N	
.0671	Anthem, Inc.		36-3897080		0001156039		Amerigroup Partnership Plan, LLC	IL	NIA	Health Ventures Partner, L.L.C.	Ownership	75.000	Anthem, Inc.	.N	
.0671	Anthem, Inc.		36-3897080		0001156039		Amerigroup Partnership Plan, LLC	IL	NIA	UNICARE Illinois Services, Inc.	Ownership	25.000	Anthem, Inc.	.N	
.0671	Anthem, Inc.	16339	82-3734368		0001156039		Amerigroup Pennsylvania, Inc.	PA	IA	AMERIGROUP Corporation	Ownership	100.000	Anthem, Inc.	.N	
.0671	Anthem, Inc.	12941	20-4776597		0001156039		AMERIGROUP Tennessee, Inc.	TN	IA	AMERIGROUP Corporation	Ownership	100.000	Anthem, Inc.	.N	
.0671	Anthem, Inc.	95314	75-2603231		0001156039		AMERIGROUP Texas, Inc.	TX	IA	AMERIGROUP Corporation	Ownership	100.000	Anthem, Inc.	.N	
.0671	Anthem, Inc.	14073	27-3510384		0001156039		AMERIGROUP Washington, Inc.	WA	IA	AMERIGROUP Corporation	Ownership	100.000	Anthem, Inc.	.N	
.0671	Anthem, Inc.	12229	06-1696189		0001156039		AMGP Georgia Managed Care Company, Inc.	GA	IA	AMERIGROUP Corporation	Ownership	100.000	Anthem, Inc.	.N	
.0671	Anthem, Inc.	16553	83-2435050		0001156039		AMH Health, LLC	ME	IA	Anthem Partnership Holding Company, LLC	Ownership	50.000	Anthem, Inc.	.N	.0102
.0671	Anthem, Inc.	62825	95-4331852		0001156039		Anthem Blue Cross Life and Health Insurance Company	CA	IA	WellPoint California Services, Inc.	Ownership	100.000	Anthem, Inc.	.N	
.0671	Anthem, Inc.		35-1898945		0001156039		Anthem Financial, Inc.	DE	NIA	Associated Group, Inc.	Ownership	100.000	Anthem, Inc.	.N	
.0671	Anthem, Inc.	95120	61-1237516		0001156039		Anthem Health Plans of Kentucky, Inc.	KY	IA	ATH Holding Company, LLC	Ownership	100.000	Anthem, Inc.	.N	
.0671	Anthem, Inc.	52618	31-1705652		0001156039		Anthem Health Plans of Maine, Inc.	ME	IA	ATH Holding Company, LLC	Ownership	100.000	Anthem, Inc.	.N	
.0671	Anthem, Inc.	53759	02-0510530		0001156039		Anthem Health Plans of New Hampshire, Inc.	NH	IA	ATH Holding Company, LLC	Ownership	100.000	Anthem, Inc.	.N	
.0671	Anthem, Inc.	71835	54-0357120	40003317	0001156039		Anthem Health Plans of Virginia, Inc.	VA	IA	Anthem Southeast, Inc.	Ownership	100.000	Anthem, Inc.	.N	
.0671	Anthem, Inc.	60217	06-1475928		0001156039		Anthem Health Plans, Inc.	CT	IA	ATH Holding Company, LLC	Ownership	100.000	Anthem, Inc.	.N	
.0671	Anthem, Inc.		61-1459939		0001156039		Anthem Holding Corp.	IN	LUIP	Anthem, Inc.	Ownership	100.000	Anthem, Inc.	.N	
.0671	Anthem, Inc.		35-2145715		0001156039	New York Stock Exchange (NYSE)	Anthem, Inc.	IN	LUIP				Anthem, Inc.	.N	
.0671	Anthem, Inc.		98-1492098		0001156039		Anthem Innovation Israel Ltd		NIA	Legato Holdings I, Inc.	Ownership	100.000	Anthem, Inc.	.N	
.0671	Anthem, Inc.	28207	35-0781558		0001156039		Anthem Insurance Companies, Inc.	IN	IA	Anthem, Inc.	Ownership	100.000	Anthem, Inc.	.N	
.0671	Anthem, Inc.	15543	47-0992859		0001156039		Anthem Kentucky Managed Care Plan, Inc.	KY	IA	ATH Holding Company, LLC	Ownership	100.000	Anthem, Inc.	.N	
.0671	Anthem, Inc.	13573	20-5876774		0001156039		Anthem Life & Disability Insurance Company	NY	IA	WellPoint Acquisition, LLC	Ownership	100.000	Anthem, Inc.	.N	
.0671	Anthem, Inc.	61069	35-0980405		0001156039		Anthem Life Insurance Company	IN	IA	Rocky Mountain Hospital and Medical Service, Inc.	Ownership	100.000	Anthem, Inc.	.N	
.0671	Anthem, Inc.		81-3974489		0001156039		Anthem Partnership Holding Company, LLC	DE	NIA	Anthem, Inc.	Ownership	100.000	Anthem, Inc.	.N	
.0671	Anthem, Inc.		46-0613946		0001156039		Anthem Services Company, LLC	IN	NIA	The Anthem Companies, Inc.	Ownership	100.000	Anthem, Inc.	.N	
.0671	Anthem, Inc.		32-0031791		0001156039		Anthem Southeast, Inc.	IN	NIA	Anthem, Inc.	Ownership	100.000	Anthem, Inc.	.N	
.0671	Anthem, Inc.		35-2129194		0001156039		Anthem UM Services, Inc.	IN	NIA	UNICARE Specialty Services, Inc.	Ownership	100.000	Anthem, Inc.	.N	
.0671	Anthem, Inc.		30-0606541		0001156039		Anthem Workers' Compensation, LLC	IN	NIA	Anthem Blue Cross Life and Health Insurance Company	Ownership	75.000	Anthem, Inc.	.N	.0109
.0671	Anthem, Inc.		30-0606541		0001156039		Anthem Workers' Compensation, LLC	IN	NIA	HealthLink, Inc.	Ownership	25.000	Anthem, Inc.	.N	.0109
.0671	Anthem, Inc.		80-0531799		0001156039		Applied Pathways, LLC	IL	NIA	American Imaging Management, Inc.	Ownership	53.520	Anthem, Inc.	.N	.0108
.0671	Anthem, Inc.		80-0531799		0001156039		Applied Pathways, LLC	IL	NIA	HEP AP Holdings, Inc.	Ownership	46.480	Anthem, Inc.	.N	.0108
.0671	Anthem, Inc.		95-4640529		0001156039		Arcus Enterprises, Inc.	DE	NIA	Anthem Holding Corp.	Ownership	100.000	Anthem, Inc.	.N	

STATEMENT AS OF SEPTEMBER 30, 2019 OF THE Compcare Health Services Insurance Corporation

**SCHEDULE Y**  
**PART 1A - DETAIL OF INSURANCE HOLDING COMPANY SYSTEM**

1	2	3	4	5	6	7	8	9	10	11	12	13	14	15	16
Group Code	Group Name	NAIC Company Code	ID Number	Federal RSSD	CIK	Name of Securities Exchange if Publicly Traded (U.S. or International)	Names of Parent, Subsidiaries Or Affiliates	Domiciliary Location	Relationship to Reporting Entity	Directly Controlled by (Name of Entity/Person)	Type of Control (Ownership, Board, Management, Attorney-in-Fact, Influence, Other)	If Control is Ownership Provide Percentage	Ultimate Controlling Entity(ies)/Person(s)	Is an SCA Filing Required? (Y/N)	*
.0671	Anthem, Inc.		90-1057454		0001156039		Aspire Health, Inc.	DE	NIA	Nash Holding Company, LLC	Ownership	100.000	Anthem, Inc.	N	
.0671	Anthem, Inc.		35-1292384		0001156039		Associated Group, Inc.	IN	NIA	Anthem Insurance Companies, Inc.	Ownership	100.000	Anthem, Inc.	N	
.0671	Anthem, Inc.		11-3713086		0001156039		ATH Holding Company, LLC	IN	NIA	Anthem, Inc.	Ownership	100.000	Anthem, Inc.	N	
.0671	Anthem, Inc.	96962	58-1638390		0001156039		Blue Cross Blue Shield Healthcare Plan of Georgia, Inc.	GA	IA	Cerulean Companies, Inc.	Ownership	100.000	Anthem, Inc.	N	
.0671	Anthem, Inc.	54003	39-0138065		0001156039		Blue Cross Blue Shield of Wisconsin	WI	LDP	Crossroads Acquisition Corp.	Ownership	100.000	Anthem, Inc.	N	
.0671	Anthem, Inc.		95-3760980		0001156039		Blue Cross of California	CA	IA	WellPoint California Services, Inc.	Ownership	100.000	Anthem, Inc.	N	.0101
.0671	Anthem, Inc.		20-2994048		0001156039		Blue Cross of California Partnership Plan, Inc.	CA	IA	Blue Cross of California	Ownership	100.000	Anthem, Inc.	N	.0101
.0671	Anthem, Inc.		84-1782311		0001156039		CareMarket, Inc.	IN	NIA	ATH Holding Company, LLC	Ownership	100.000	Anthem, Inc.	N	
.0671	Anthem, Inc.		95-4694706		0001156039		CareMore Health Plan	CA	IA	Caremore Health System	Ownership	100.000	Anthem, Inc.	N	.0101
.0671	Anthem, Inc.	13562	38-3795280		0001156039		CareMore Health Plan of Arizona, Inc.	AZ	IA	Caremore Health System	Ownership	100.000	Anthem, Inc.	N	
.0671	Anthem, Inc.	13605	26-4001602		0001156039		CareMore Health Plan of Nevada	NV	IA	Caremore Health System	Ownership	100.000	Anthem, Inc.	N	
.0671	Anthem, Inc.		27-1625392		0001156039		Caremore Health Plan of Texas, Inc.	TX	NIA	Caremore Health System	Ownership	100.000	Anthem, Inc.	N	
.0671	Anthem, Inc.		32-0373216		0001156039		Caremore, LLC	IN	NIA	Caremore Health System	Ownership	100.000	Anthem, Inc.	N	
.0671	Anthem, Inc.		20-2076421		0001156039		Caremore Health System	CA	NIA	ATH Holding Company, LLC	Ownership	100.000	Anthem, Inc.	N	
.0671	Anthem, Inc.		58-2217138		0001156039		Cerulean Companies, Inc.	GA	NIA	Anthem Holding Corp.	Ownership	100.000	Anthem, Inc.	N	
.0671	Anthem, Inc.		39-1413702		0001156039		Claim Management Services, Inc.	WI	NIA	Blue Cross Blue Shield of Wisconsin	Ownership	100.000	Anthem, Inc.	N	
.0671	Anthem, Inc.	16345	82-1853423		0001156039		CCHA, LLC	CO	IA	Anthem Partnership Holding Company, LLC	Ownership	50.000	Anthem, Inc.	N	.0102
.0671	Anthem, Inc.		26-4674149		0001156039		Community Care Health Plan of Louisiana, Inc.	LA	IA	Anthem Partnership Holding Company, LLC	Ownership	75.000	Anthem, Inc.	N	.0104
.0671	Anthem, Inc.	12586	20-3317697		0001156039		Community Care Health Plan of Nevada, Inc.	NV	IA	AMERIGROUP Corporation	Ownership	100.000	Anthem, Inc.	N	
.0671	Anthem, Inc.	10345	31-1440175		0001156039		Community Insurance Company	OH	IA	ATH Holding Company, LLC	Ownership	100.000	Anthem, Inc.	N	
.0671	Anthem, Inc.	95693	39-1462554		0001156039		Compcare Health Services Insurance Corporation	WI	RE	Blue Cross Blue Shield of Wisconsin	Ownership	100.000	Anthem, Inc.	N	
.0671	Anthem, Inc.		20-0334650		0001156039		Crossroads Acquisition Corp.	DE	UIP	Anthem Holding Corp.	Ownership	100.000	Anthem, Inc.	N	
.0671	Anthem, Inc.		82-3027094		0001156039		DBG Holdings, Inc.	IN	NIA	Anthem, Inc.	Ownership	100.000	Anthem, Inc.	N	
.0671	Anthem, Inc.		41-1905556		0001156039		DeCare Analytics, LLC	MN	NIA	DeCare Dental, LLC	Ownership	100.000	Anthem, Inc.	N	
.0671	Anthem, Inc.		02-0574609		0001156039		DeCare Dental Health International, LLC	MN	NIA	DeCare Dental, LLC	Ownership	100.000	Anthem, Inc.	N	
.0671	Anthem, Inc.				0001156039		DeCare Dental Insurance Ireland, Ltd.	IRL	NIA	DeCare Dental, LLC	Ownership	100.000	Anthem, Inc.	N	
.0671	Anthem, Inc.		73-1665525		0001156039		DeCare Dental Networks, LLC	MN	NIA	DeCare Dental, LLC	Ownership	100.000	Anthem, Inc.	N	
.0671	Anthem, Inc.		01-0822645		0001156039		DeCare Dental, LLC	MN	NIA	Anthem Holding Corp.	Ownership	100.000	Anthem, Inc.	N	
.0671	Anthem, Inc.				0001156039		DeCare Operations Ireland, Limited	IRL	NIA	DeCare Dental, LLC	Ownership	100.000	Anthem, Inc.	N	
.0671	Anthem, Inc.		20-0660775		0001156039		Delivery Network, LLC	FL	NIA	HealthSun Holdings, LLC	Ownership	100.000	Anthem, Inc.	N	
.0671	Anthem, Inc.		26-2544715		0001156039		Designated Agent Company, Inc.	KY	NIA	Anthem Health Plans of Kentucky, Inc.	Ownership	100.000	Anthem, Inc.	N	
.0671	Anthem, Inc.		27-2844373		0001156039		EasyScripts Outler Bay, LLC	FL	NIA	HealthSun Holdings, LLC	Ownership	100.000	Anthem, Inc.	N	
.0671	Anthem, Inc.		26-2974996		0001156039		EasyScripts Hialeah, LLC	FL	NIA	HealthSun Holdings, LLC	Ownership	100.000	Anthem, Inc.	N	
.0671	Anthem, Inc.		30-0478573		0001156039		EasyScripts LLC	FL	NIA	HealthSun Holdings, LLC	Ownership	100.000	Anthem, Inc.	N	
.0671	Anthem, Inc.		46-0613819		0001156039		EasyScripts Westchester, LLC	FL	NIA	HealthSun Holdings, LLC	Ownership	100.000	Anthem, Inc.	N	
.0671	Anthem, Inc.		13-3934328		0001156039		EHC Benefits Agency, Inc.	NY	NIA	WellPoint Holding Corp	Ownership	100.000	Anthem, Inc.	N	
.0671	Anthem, Inc.	55093	23-7391136		0001156039		Empire HealthChoice Assurance, Inc.	NY	IA	WellPoint Holding Corp	Ownership	100.000	Anthem, Inc.	N	
.0671	Anthem, Inc.	95433	13-3874803		0001156039		Empire HealthChoice HMO, Inc.	NY	IA	Empire HealthChoice Assurance, Inc.	Ownership	100.000	Anthem, Inc.	N	
.0671	Anthem, Inc.		26-4286154		0001156039		Federal Government Solutions, LLC	WI	NIA	ATH Holding Company, LLC	Ownership	100.000	Anthem, Inc.	N	
.0671	Anthem, Inc.	10119	41-2128275		0001156039		Freedom Health, Inc.	FL	IA	ATH Holding Company, LLC	Ownership	100.000	Anthem, Inc.	N	
.0671	Anthem, Inc.		33-0884790		0001156039		Gerinet Physician Services, Inc.	CA	NIA	Caremore Health System	Ownership	50.000	Anthem, Inc.	N	.0102
.0671	Anthem, Inc.		20-1378912		0001156039		Global TPA, LLC	FL	NIA	ATH Holding Company, LLC	Ownership	100.000	Anthem, Inc.	N	
.0671	Anthem, Inc.		95-2907752		0001156039		Golden West Health Plan, Inc.	CA	IA	WellPoint California Services, Inc.	Ownership	100.000	Anthem, Inc.	N	.0101
.0671	Anthem, Inc.	97217	58-1473042		0001156039		Greater Georgia Life Insurance Company	GA	IA	Blue Cross Blue Shield Healthcare Plan of Georgia, Inc.	Ownership	100.000	Anthem, Inc.	N	
.0671	Anthem, Inc.		51-0365660		0001156039		Health Core, Inc.	DE	NIA	Arcus Enterprises, Inc.	Ownership	100.000	Anthem, Inc.	N	
.0671	Anthem, Inc.		54-1237939		0001156039		Health Management Corporation	VA	NIA	Southeast Services, Inc.	Ownership	100.000	Anthem, Inc.	N	
.0671	Anthem, Inc.		36-3897701		0001156039		Health Ventures Partner, L.L.C.	IL	NIA	UNICARE National Services, Inc.	Ownership	100.000	Anthem, Inc.	N	
.0671	Anthem, Inc.	95169	54-1356687		0001156039		HealthKeepers, Inc.	VA	IA	Anthem Southeast, Inc.	Ownership	92.510	Anthem, Inc.	N	
.0671	Anthem, Inc.	95169	54-1356687		0001156039		HealthKeepers, Inc.	VA	IA	UNICARE National Services, Inc.	Ownership	7.490	Anthem, Inc.	N	

STATEMENT AS OF SEPTEMBER 30, 2019 OF THE Compcare Health Services Insurance Corporation

**SCHEDULE Y**  
**PART 1A - DETAIL OF INSURANCE HOLDING COMPANY SYSTEM**

1	2	3	4	5	6	7	8	9	10	11	12	13	14	15	16
Group Code	Group Name	NAIC Company Code	ID Number	Federal RSSD	CIK	Name of Securities Exchange if Publicly Traded (U.S. or International)	Names of Parent, Subsidiaries Or Affiliates	Domiciliary Location	Relationship to Reporting Entity	Directly Controlled by (Name of Entity/Person)	Type of Control (Ownership, Board, Management, Attorney-in-Fact, Influence, Other)	If Control is Ownership Provide Percentage	Ultimate Controlling Entity(ies)/Person(s)	Is an SCA Filing Required? (Y/N)	*
.0671	Anthem, Inc.	96475	43-1616135		0001156039		HealthLink HMO, Inc.	MO	IA	HealthLink, Inc.	Ownership	100.000	Anthem, Inc.	N	
.0671	Anthem, Inc.		43-1364135		0001156039		HealthLink, Inc.	IL	NIA	RightCHOICE Managed Care, Inc.	Ownership	100.000	Anthem, Inc.	N	
.0671	Anthem, Inc.		82-4966088		0001156039		HealthLink Insurance Company	IL	NIA	AMERIGROUP Corporation	Ownership	100.000	Anthem, Inc.	N	
.0671	Anthem, Inc.		13-3865627		0001156039		HealthPlus HP, LLC	NY	IA	AMERIGROUP Corporation	Ownership	100.000	Anthem, Inc.	N	.0100
.0671	Anthem, Inc.	10122	20-0982649		0001156039		HealthSun Health Plans, Inc.	FL	IA	Highland Acquisition Holdings, LLC	Ownership	100.000	Anthem, Inc.	N	
.0671	Anthem, Inc.		20-0660271		0001156039		HealthSun Holdings, LLC	FL	NIA	HealthSun Management, LLC	Ownership	100.000	Anthem, Inc.	N	
.0671	Anthem, Inc.		20-0660168		0001156039		HealthSun Management, LLC	FL	NIA	Highland Acquisition Holdings, LLC	Ownership	100.000	Anthem, Inc.	N	
.0671	Anthem, Inc.		46-5250294		0001156039		HealthSun Physicians Network, LLC	FL	NIA	Delivery Network, LLC	Ownership	100.000	Anthem, Inc.	N	
.0671	Anthem, Inc.		46-3434016		0001156039		HealthSun Physicians Network I, LLC	FL	NIA	HealthSun Physicians Network, LLC	Ownership	100.000	Anthem, Inc.	N	
.0671	Anthem, Inc.	78972	86-0257201		0001156039		Healthy Alliance Life Insurance Company	MO	IA	RightCHOICE Managed Care, Inc.	Ownership	100.000	Anthem, Inc.	N	
.0671	Anthem, Inc.		47-3953545		0001156039		HEP AP Holdings, Inc.	DE	NIA	Imaging Management Holdings, L.L.C.	Ownership	100.000	Anthem, Inc.	N	
.0671	Anthem, Inc.		81-3867547		0001156039		Highland Holdco, Inc.	DE	NIA	ATH Holding Company, LLC	Ownership	100.000	Anthem, Inc.	N	
.0671	Anthem, Inc.		81-3487249		0001156039		Highland Acquisition Holdings, LLC	DE	NIA	Highland Intermediate Holdings, LLC	Ownership	100.000	Anthem, Inc.	N	
.0671	Anthem, Inc.		81-3471305		0001156039		Highland Intermediate Holdings, LLC	DE	NIA	Highland Investor Holdings, LLC	Ownership	100.000	Anthem, Inc.	N	
.0671	Anthem, Inc.		81-3493196		0001156039		Highland Investor Holdings, LLC	DE	NIA	ATH Holding Company, LLC	Ownership	72.480	Anthem, Inc.	N	.0107
.0671	Anthem, Inc.		81-3493196		0001156039		Highland Investor Holdings, LLC	DE	NIA	Highland Holdco, Inc.	Ownership	27.520	Anthem, Inc.	N	.0107
.0671	Anthem, Inc.	95473	84-1017384		0001156039		HMO Colorado, Inc.	CO	IA	Rocky Mountain Hospital and Medical Service, Inc.	Ownership	100.000	Anthem, Inc.	N	
.0671	Anthem, Inc.	95358	37-1216698		0001156039		HMO Missouri, Inc.	MO	IA	RightCHOICE Managed Care, Inc.	Ownership	100.000	Anthem, Inc.	N	
.0671	Anthem, Inc.				0001156039		Human Resource Associates, LLC	FL	NIA	HealthSun Holdings, LLC	Ownership	100.000	Anthem, Inc.	N	
.0671	Anthem, Inc.		75-2619605		0001156039		Imaging Management Holdings, L.L.C.	DE	NIA	ATH Holding Company, LLC	Ownership	100.000	Anthem, Inc.	N	
.0671	Anthem, Inc.		82-3062245		0001156039		IngenioRX, Inc.	IN	NIA	DBG Holdings, Inc.	Ownership	100.000	Anthem, Inc.	N	
.0671	Anthem, Inc.		98-1397080		0001156039		Legato Health Technologies LLP	IN	NIA	Legato Holdings I, Inc.	Ownership	100.000	Anthem, Inc.	N	.0105
.0671	Anthem, Inc.				0001156039		Legato Health Technologies Philippines, Inc.								
.0671	Anthem, Inc.		98-1490582		0001156039			PHL	NIA	Legato Holdings I, Inc.	Ownership	100.000	Anthem, Inc.	N	.0106
.0671	Anthem, Inc.		82-3030791		0001156039		Legato Holdings I, Inc.	IN	NIA	Anthem, Inc.	Ownership	100.000	Anthem, Inc.	N	
.0671	Anthem, Inc.		82-3031178		0001156039		Legato Holdings II, LLC	IN	NIA	Legato Holdings I, Inc.	Ownership	100.000	Anthem, Inc.	N	
.0671	Anthem, Inc.		02-0581429		0001156039		Living Complete Technologies, Inc.	MD	NIA	ATH Holding Company, LLC	Ownership	100.000	Anthem, Inc.	N	
.0671	Anthem, Inc.	95527	02-0494919		0001156039		Matthew Thornton Health Plan, Inc.	NH	IA	Anthem Health Plans of New Hampshire, Inc.	Ownership	100.000	Anthem, Inc.	N	
.0671	Anthem, Inc.		46-5262131		0001156039		Memphis Supportive Care Partnership, LLC	TN	NIA	Nash Holding Company, LLC	Ownership	100.000	Anthem, Inc.	N	
.0671	Anthem, Inc.				0001156039		Meridian Resource Company, LLC	WI	DS	Compcare Health Services Insurance Corporation	Ownership	100.000	Anthem, Inc.	N	
.0671	Anthem, Inc.		39-2013971		0001156039		Momentum Health Partners, LLC	NC	NIA	Anthem Partnership Holding Company, LLC	Ownership	50.000	Anthem, Inc.	N	.0102
.0671	Anthem, Inc.		83-0892028		0001156039		Nash Holding Company, LLC	DE	NIA	ATH Holding Company, LLC	Ownership	100.000	Anthem, Inc.	N	
.0671	Anthem, Inc.		35-1840597		0001156039		National Government Services, Inc.	IN	NIA	Federal Government Solutions, LLC	Ownership	100.000	Anthem, Inc.	N	
.0671	Anthem, Inc.		04-2919509		0001156039		New England Research Institute, Inc.	MA	NIA	Health Core, Inc.	Ownership	100.000	Anthem, Inc.	N	
.0671	Anthem, Inc.		81-5476630		0001156039		NGS Federal, LLC	IN	NIA	Federal Government Solutions, LLC	Ownership	100.000	Anthem, Inc.	N	
.0671	Anthem, Inc.	12259	20-1336412		0001156039		Optimum Healthcare, Inc.	FL	IA	ATH Holding Company, LLC	Ownership	100.000	Anthem, Inc.	N	
.0671	Anthem, Inc.		95-4249368		0001156039		Park Square Holdings, Inc.	CA	NIA	WellPoint California Services, Inc.	Ownership	100.000	Anthem, Inc.	N	
.0671	Anthem, Inc.		95-4386221		0001156039		Park Square I, Inc.	CA	NIA	WellPoint California Services, Inc.	Ownership	100.000	Anthem, Inc.	N	
.0671	Anthem, Inc.		95-4249345		0001156039		Park Square II, Inc.	CA	NIA	WellPoint California Services, Inc.	Ownership	100.000	Anthem, Inc.	N	
.0671	Anthem, Inc.		27-1991772		0001156039		Pasteur Medical Birds Road, LLC	FL	NIA	Pasteur Medical Holdings, LLC	Ownership	100.000	Anthem, Inc.	N	
.0671	Anthem, Inc.		20-2749389		0001156039		Pasteur Medical Center, LLC	DE	NIA	HealthSun Holdings, LLC	Ownership	100.000	Anthem, Inc.	N	
.0671	Anthem, Inc.		27-1366915		0001156039		Pasteur Medical Cutler Bay, LLC	FL	NIA	Pasteur Medical Holdings, LLC	Ownership	100.000	Anthem, Inc.	N	
.0671	Anthem, Inc.		20-0610128		0001156039		Pasteur Medical Group, LLC	FL	NIA	Pasteur Medical Holdings, LLC	Ownership	100.000	Anthem, Inc.	N	
.0671	Anthem, Inc.		37-1668303		0001156039		Pasteur Medical Hialeah Gardens, LLC	FL	NIA	Pasteur Medical Holdings, LLC	Ownership	100.000	Anthem, Inc.	N	
.0671	Anthem, Inc.		45-1616220		0001156039		Pasteur Medical Holdings, LLC	FL	NIA	HealthSun Holdings, LLC	Ownership	100.000	Anthem, Inc.	N	
.0671	Anthem, Inc.		47-3464152		0001156039		Pasteur Medical Kendall, LLC	FL	NIA	Pasteur Medical Holdings, LLC	Ownership	100.000	Anthem, Inc.	N	
.0671	Anthem, Inc.		27-2810478		0001156039		Pasteur Medical Management, LLC	FL	NIA	Pasteur Medical Holdings, LLC	Ownership	100.000	Anthem, Inc.	N	
.0671	Anthem, Inc.		33-1217936		0001156039		Pasteur Medical Miami Gardens, LLC	FL	NIA	Pasteur Medical Holdings, LLC	Ownership	100.000	Anthem, Inc.	N	
.0671	Anthem, Inc.		27-2651017		0001156039		Pasteur Medical North Miami Beach, LLC	FL	NIA	Pasteur Medical Holdings, LLC	Ownership	100.000	Anthem, Inc.	N	
.0671	Anthem, Inc.		26-0813665		0001156039		Pasteur Medical Partners, LLC	FL	NIA	HealthSun Holdings, LLC	Ownership	100.000	Anthem, Inc.	N	
.0671	Anthem, Inc.		56-2396739		0001156039		Resolution Health, Inc.	DE	NIA	Anthem Southeast, Inc.	Ownership	100.000	Anthem, Inc.	N	

STATEMENT AS OF SEPTEMBER 30, 2019 OF THE Compcare Health Services Insurance Corporation

**SCHEDULE Y**

**PART 1A - DETAIL OF INSURANCE HOLDING COMPANY SYSTEM**

1	2	3	4	5	6	7	8	9	10	11	12	13	14	15	16
Group Code	Group Name	NAIC Company Code	ID Number	Federal RSSD	CIK	Name of Securities Exchange if Publicly Traded (U.S. or International)	Names of Parent, Subsidiaries Or Affiliates	Domiciliary Location	Relationship to Reporting Entity	Directly Controlled by (Name of Entity/Person)	Type of Control (Ownership, Board, Management, Attorney-in-Fact, Influence, Other)	If Control is Ownership Provide Percentage	Ultimate Controlling Entity(ies)/Person(s)	Is an SCA Filing Required? (Y/N)	*
.0671	Anthem, Inc.		47-0851593		0001156039		RightCHOICE Managed Care, Inc.	DE	NIA	Anthem Holding Corp.	Ownership	100.000	Anthem, Inc.	N	
.0671	Anthem, Inc.	.11011	84-0747736		0001156039		Rocky Mountain Hospital and Medical Service, Inc.	CO	IA	ATH Holding Company, LLC	Ownership	100.000	Anthem, Inc.	N	
.0671	Anthem, Inc.	.13726	20-0473316		0001156039		SellCore, Inc.	DE	NIA	Anthem, Inc.	Ownership	100.000	Anthem, Inc.	N	
.0671	Anthem, Inc.		27-0945036		0001156039		Simply Healthcare Plans, Inc.	FL	IA	AMERIGROUP Corporation	Ownership	100.000	Anthem, Inc.	N	
.0671	Anthem, Inc.		55-0712302		0001156039		Southeast Services, Inc.	VA	NIA	Anthem Southeast, Inc.	Ownership	100.000	Anthem, Inc.	N	
.0671	Anthem, Inc.		45-4071004		0001156039		State Sponsored Services, Inc.	IN	NIA	UNICARE Specialty Services, Inc.	Ownership	100.000	Anthem, Inc.	N	
.0671	Anthem, Inc.		35-1835818		0001156039		The Anthem Companies, Inc.	IN	NIA	ATH Holding Company, LLC	Ownership	100.000	Anthem, Inc.	N	
.0671	Anthem, Inc.		45-5443372		0001156039		The Anthem Companies of California, Inc.	CA	NIA	ATH Holding Company, LLC	Ownership	100.000	Anthem, Inc.	N	
.0671	Anthem, Inc.		43-1967924		0001156039		TrustSolutions, LLC	WI	NIA	Federal Government Solutions, LLC	Ownership	100.000	Anthem, Inc.	N	
.0671	Anthem, Inc.	.11810	84-1620480		0001156039		UNICARE Health Plan of West Virginia, Inc.	WV	IA	UNICARE National Services, Inc.	Ownership	100.000	Anthem, Inc.	N	
.0671	Anthem, Inc.		36-3899137		0001156039		UNICARE Illinois Services, Inc.	IL	NIA	UNICARE National Services, Inc.	Ownership	100.000	Anthem, Inc.	N	
.0671	Anthem, Inc.	.80314	52-0913817		0001156039		UNICARE Life & Health Insurance Company	IN	IA	UNICARE National Services, Inc.	Ownership	100.000	Anthem, Inc.	N	
.0671	Anthem, Inc.		95-4635507		0001156039		UNICARE National Services, Inc.	DE	NIA	Anthem Holding Corp.	Ownership	100.000	Anthem, Inc.	N	
.0671	Anthem, Inc.		77-0494551		0001156039		UNICARE Specialty Services, Inc.	DE	NIA	Anthem Holding Corp.	Ownership	100.000	Anthem, Inc.	N	
.0671	Anthem, Inc.		82-3300542		0001156039		Valus, Inc.	IN	NIA	DBG Holdings, Inc.	Ownership	100.000	Anthem, Inc.	N	
.0671	Anthem, Inc.		20-0660563		0001156039		WellMax Health Medical Centers, LLC	FL	NIA	Delivery Network, LLC	Ownership	100.000	Anthem, Inc.	N	
.0671	Anthem, Inc.		20-0660644		0001156039		WellMax Health Physicians Network, LLC	FL	NIA	Delivery Network, LLC	Ownership	100.000	Anthem, Inc.	N	
.0671	Anthem, Inc.		20-4405193		0001156039		WellPoint Acquisition, LLC	IN	NIA	Anthem, Inc.	Ownership	100.000	Anthem, Inc.	N	
.0671	Anthem, Inc.		20-2156380		0001156039		WellPoint Behavioral Health, Inc.	DE	NIA	UNICARE Specialty Services, Inc.	Ownership	100.000	Anthem, Inc.	N	
.0671	Anthem, Inc.		95-4640531		0001156039		WellPoint California Services, Inc.	DE	NIA	Anthem Holding Corp.	Ownership	100.000	Anthem, Inc.	N	
.0671	Anthem, Inc.		95-4657170		0001156039		WellPoint Dental Services, Inc.	DE	NIA	UNICARE Specialty Services, Inc.	Ownership	100.000	Anthem, Inc.	N	
.0671	Anthem, Inc.		81-2874917		0001156039		WellPoint Health Solutions, Inc.	DE	NIA	Federal Government Solutions, LLC	Ownership	100.000	Anthem, Inc.	N	
.0671	Anthem, Inc.		20-3620996		0001156039		WellPoint Holding Corp	DE	NIA	Anthem, Inc.	Ownership	100.000	Anthem, Inc.	N	
.0671	Anthem, Inc.		45-2736438		0001156039		WellPoint Information Technology Services, Inc.	CA	NIA	Blue Cross of California	Ownership	100.000	Anthem, Inc.	N	
.0671	Anthem, Inc.		36-4595641		0001156039		WellPoint Insurance Services, Inc.	HI	NIA	Anthem, Inc.	Ownership	100.000	Anthem, Inc.	N	
.0671	Anthem, Inc.		47-2546820		0001156039		WellPoint Military Care Corporation	IN	NIA	Federal Government Solutions, LLC	Ownership	100.000	Anthem, Inc.	N	
.0671	Anthem, Inc.	.15929	47-5569628		0001156039		Wisconsin Collaborative Insurance Company	WI	IA	Crossroads Acquisition Corp.	Ownership	50.000	Anthem, Inc.	N	.0102
.0671	Anthem, Inc.		20-8672847		0001156039		WPMI, LLC	DE	NIA	ATH Holding Company, LLC	Ownership	69.910	Anthem, Inc.	N	.0103

Asterisk	Explanation
0100	Insurer is deemed to be an insurance affiliate in column 10, but does not have an NAIC Company Code in column 3 because it is regulated by the New York State Department of Health.
0101	Insurer is deemed to be an insurance affiliate in column 10, but does not have an NAIC Company Code in column 3 because it is regulated by the California Department of Managed Health Care.
0102	50% owned by unaffiliated investors
0103	30.09% owned by unaffiliated investors
0104	25% owned by an unaffiliated investor
0105	Legato Health Technologies LLP is a Limited Liability Partnership formed under the laws of India, and is 99% owned by Legato Holdings I, Inc. an Indiana corporation, and 1% owned by Legato Holdings II, LLC, an Indiana Limited Liability company.
0106	Legato Health Technologies Philippines, Inc. was incorporated under with the Republic of the Philippines, and is 100% owned by Legato Holdings I, Inc. an Indiana corporation.
0107	Highland Investor Holding LLC is a Limited Liability Company formed under the laws of Delaware, and is 72.48% owned by Anthem Holding Company, LLC. an Indiana limited liability company, and 27.52% owned by Highland Holdco, Inc., a Delaware corporation.
0108	Applied Pathways, LLC is a Limited Liability Company formed under the laws of Illinois, and is 53.52% owned by American Imaging Management, Inc. an Illinois limited liability company, and 46.48% owned by HEP AP Holdings, Inc., a Delaware corporation.
0109	Anthem Worker's Compensation, LLC is owned 75% by Anthem Blue Cross Life and Health Insurance Company and 25% by HealthLink, Inc.

# SUPPLEMENTAL EXHIBITS AND SCHEDULES INTERROGATORIES

The following supplemental reports are required to be filed as part of your statement filing. However, in the event that your company does not transact the type of business for which the special report must be filed, your response of NO to the specific interrogatory will be accepted in lieu of filing a "NONE" report and a bar code will be printed below. If the supplement is required of your company but is not being filed for whatever reason enter SEE EXPLANATION and provide an explanation following the interrogatory questions.

	Response
1. Will the Medicare Part D Coverage Supplement be filed with the state of domicile and the NAIC with this statement? .....	NO

Explanation:

1.

Bar Code:

1. Medicare Part D Coverage Supplement [Document Identifier 365]



**OVERFLOW PAGE FOR WRITE-INS**

Additional Write-ins for Assets Line 25

	Current Statement Date			4 Prior Year Net Admitted Assets
	1 Assets	2 Nonadmitted Assets	3 Net Admitted Assets (Cols. 1 - 2)	
2504. Miscellaneous assets .....	1,427	1,427	0	0
2597. Summary of remaining write-ins for Line 25 from overflow page	1,427	1,427	0	0



## SCHEDULE A - VERIFICATION

Real Estate

	1 Year to Date	2 Prior Year Ended December 31
1. Book/adjusted carrying value, December 31 of prior year .....		
2. Cost of acquired:		
2.1 Actual cost at time of acquisition .....		
2.2 Additional investment made after acquisition .....		
3. Current year change in encumbrances .....		
4. Total gain (loss) on disposals .....		
5. Deduct amounts received on disposals .....		
6. Total foreign exchange change in book/adjusted carrying value .....		
7. Deduct current year's other than temporary impairment recognized .....		
8. Deduct current year's depreciation .....		
9. Book/adjusted carrying value at the end of current period (Lines 1+2+3+4-5+6-7-8) .....		
10. Deduct total nonadmitted amounts .....		
11. Statement value at end of current period (Line 9 minus Line 10) .....		

**NONE**

## SCHEDULE B - VERIFICATION

Mortgage Loans

	1 Year to Date	2 Prior Year Ended December 31
1. Book value/recorded investment excluding accrued interest, December 31 of prior year .....		
2. Cost of acquired:		
2.1 Actual cost at time of acquisition .....		
2.2 Additional investment made after acquisition .....		
3. Capitalized deferred interest and other .....		
4. Accrual of discount .....		
5. Unrealized valuation increase (decrease) .....		
6. Total gain (loss) on disposals .....		
7. Deduct amounts received on disposals .....		
8. Deduct amortization of premium and mortgage investment and commitment fees .....		
9. Total foreign exchange change in book value/recorded investment including accrued interest .....		
10. Deduct current year's other than temporary impairment recognized .....		
11. Book value/recorded investment excluding accrued interest at end of current period (Lines 1+2+3+4+5+6-7-8+9-10) .....		
12. Total valuation allowance .....		
13. Subtotal (Line 11 plus Line 12) .....		
14. Deduct total nonadmitted amounts .....		
15. Statement value at end of current period (Line 13 minus Line 14) .....		

**NONE**

## SCHEDULE BA - VERIFICATION

Other Long-Term Invested Assets

	1 Year to Date	2 Prior Year Ended December 31
1. Book/adjusted carrying value, December 31 of prior year .....	3,944,984	11,499,717
2. Cost of acquired:		
2.1 Actual cost at time of acquisition .....		
2.2 Additional investment made after acquisition .....		
3. Capitalized deferred interest and other .....		0
4. Accrual of discount .....		
5. Unrealized valuation increase (decrease) .....	12,536,191	(7,554,733)
6. Total gain (loss) on disposals .....		
7. Deduct amounts received on disposals .....		
8. Deduct amortization of premium and depreciation .....		
9. Total foreign exchange change in book/adjusted carrying value .....		0
10. Deduct current year's other than temporary impairment recognized .....		0
11. Book/adjusted carrying value at end of current period (Lines 1+2+3+4+5+6-7-8+9-10) .....	16,481,175	3,944,984
12. Deduct total nonadmitted amounts .....	16,481,175	3,944,984
13. Statement value at end of current period (Line 11 minus Line 12) .....	0	0

## SCHEDULE D - VERIFICATION

Bonds and Stocks

	1 Year to Date	2 Prior Year Ended December 31
1. Book/adjusted carrying value of bonds and stocks, December 31 of prior year .....	251,880,477	256,061,210
2. Cost of bonds and stocks acquired .....	106,403,187	54,039,482
3. Accrual of discount .....	249,217	270,012
4. Unrealized valuation increase (decrease) .....	90,922	(275,157)
5. Total gain (loss) on disposals .....	91,799	60,962
6. Deduct consideration for bonds and stocks disposed of .....	43,631,923	56,896,289
7. Deduct amortization of premium .....	1,068,214	1,405,881
8. Total foreign exchange change in book/adjusted carrying value .....		
9. Deduct current year's other than temporary impairment recognized .....		
10. Total investment income recognized as a result of prepayment penalties and/or acceleration fees .....	32,325	26,138
11. Book/adjusted carrying value at end of current period (Lines 1+2+3+4+5-6-7+8-9+10) .....	314,047,790	251,880,477
12. Deduct total nonadmitted amounts .....		
13. Statement value at end of current period (Line 11 minus Line 12) .....	314,047,790	251,880,477

STATEMENT AS OF SEPTEMBER 30, 2019 OF THE Compcare Health Services Insurance Corporation

**SCHEDULE D - PART 1B**

Showing the Acquisitions, Dispositions and Non-Trading Activity  
During the Current Quarter for all Bonds and Preferred Stock by NAIC Designation

NAIC Designation	1 Book/Adjusted Carrying Value Beginning of Current Quarter	2 Acquisitions During Current Quarter	3 Dispositions During Current Quarter	4 Non-Trading Activity During Current Quarter	5 Book/Adjusted Carrying Value End of First Quarter	6 Book/Adjusted Carrying Value End of Second Quarter	7 Book/Adjusted Carrying Value End of Third Quarter	8 Book/Adjusted Carrying Value December 31 Prior Year
<b>BONDS</b>								
1. NAIC 1 (a) .....	222,277,181	47,621,425	29,327,930	(1,719,956)	186,716,940	222,277,181	238,850,720	188,414,853
2. NAIC 2 (a) .....	78,795,054	7,684,344	4,254,149	1,527,920	62,745,290	78,795,054	83,753,169	60,073,839
3. NAIC 3 (a) .....	3,496,650	0	679	(53,392)	3,514,796	3,496,650	3,442,579	3,356,254
4. NAIC 4 (a) .....	0				30,466	0	0	35,532
5. NAIC 5 (a) .....	0				0	0	0	
6. NAIC 6 (a) .....	0				0	0	0	
7. Total Bonds	304,568,885	55,305,769	33,582,758	(245,428)	253,007,492	304,568,885	326,046,468	251,880,478
<b>PREFERRED STOCK</b>								
8. NAIC 1 .....	0				0	0	0	0
9. NAIC 2 .....	0				0	0	0	0
10. NAIC 3 .....	0				0	0	0	0
11. NAIC 4 .....	0				0	0	0	0
12. NAIC 5 .....	0				0	0	0	0
13. NAIC 6 .....	0				0	0	0	0
14. Total Preferred Stock	0	0	0	0	0	0	0	0
15. Total Bonds and Preferred Stock	304,568,885	55,305,769	33,582,758	(245,428)	253,007,492	304,568,885	326,046,468	251,880,478

(a) Book/Adjusted Carrying Value column for the end of the current reporting period includes the following amount of short-term and cash equivalent bonds by NAIC designation:

NAIC 1 \$ 11,998,680 ; NAIC 2 \$ 0 ; NAIC 3 \$ 0 ; NAIC 4 \$ 0 ; NAIC 5 \$ 0 ; NAIC 6 \$ 0

Schedule DA - Part 1 - Short-Term Investments

**NONE**

Schedule DA - Verification - Short-Term Investments

**NONE**

Schedule DB - Part A - Verification - Options, Caps, Floors, Collars, Swaps and Forwards

**NONE**

Schedule DB - Part B - Verification - Futures Contracts

**NONE**

Schedule DB - Part C - Section 1 - Replication (Synthetic Asset) Transactions (RSATs) Open

**NONE**

Schedule DB-Part C-Section 2-Reconciliation of Replication (Synthetic Asset) Transactions Open

**NONE**

Schedule DB - Verification - Book/Adjusted Carrying Value, Fair Value and Potential Exposure of  
Derivatives

**NONE**

**SCHEDULE E - PART 2 - VERIFICATION**

(Cash Equivalents)

	1	2
	Year To Date	Prior Year Ended December 31
1. Book/adjusted carrying value, December 31 of prior year .....	14,000,000	7,004,798
2. Cost of cash equivalents acquired .....	643,935,640	543,210,544
3. Accrual of discount .....	63,040	
4. Unrealized valuation increase (decrease) .....		
5. Total gain (loss) on disposals .....	9,196	
6. Deduct consideration received on disposals .....	646,009,196	536,215,342
7. Deduct amortization of premium .....		
8. Total foreign exchange change in book/adjusted carrying value .....		
9. Deduct current year's other than temporary impairment recognized .....		
10. Book/adjusted carrying value at end of current period (Lines 1+2+3+4+5-6-7+8-9) .....	11,998,680	14,000,000
11. Deduct total nonadmitted amounts .....		
12. Statement value at end of current period (Line 10 minus Line 11)	11,998,680	14,000,000

Schedule A - Part 2 - Real Estate Acquired and Additions Made

**NONE**

Schedule A - Part 3 - Real Estate Disposed

**NONE**

Schedule B - Part 2 - Mortgage Loans Acquired and Additions Made

**NONE**

Schedule B - Part 3 - Mortgage Loans Disposed, Transferred or Repaid

**NONE**

Schedule BA - Part 2 - Other Long-Term Invested Assets Acquired and Additions Made

**NONE**

Schedule BA - Part 3 - Other Long-Term Invested Assets Disposed, Transferred or Repaid

**NONE**

STATEMENT AS OF SEPTEMBER 30, 2019 OF THE Compcare Health Services Insurance Corporation

**SCHEDULE D - PART 3**

Show All Long-Term Bonds and Stock Acquired During the Current Quarter

1	2	3	4	5	6	7	8	9	10
CUSIP Identification	Description	Foreign	Date Acquired	Name of Vendor	Number of Shares of Stock	Actual Cost	Par Value	Paid for Accrued Interest and Dividends	NAIC Designation and Administrative Symbol/Market Indicator (a)
36179R-F9-5	GNMA 11 POOL MA2892 3.500% 06/20/45		09/27/2019	Credit Suisse Securities		607,287	582,355	1,132	1
912828-5M-8	US TREASURY N/B 3.125% 11/15/28		09/13/2019	BARCLAYS CAPITAL		469,027	425,000	4,511	1
912828-YE-4	US TREASURY N/B 1.250% 08/31/24		09/20/2019	Deutsche Bank		14,224,160	14,500,000	11,951	1
<b>0599999. Subtotal - Bonds - U.S. Governments</b>						15,300,474	15,507,355	17,594	XXX
259291-PP-1	DOUGLAS CNTY NE SCH DIST 1 4.000% 12/15/33		09/20/2019	MESIROW		1,920,650	1,650,000	18,150	1FE
<b>2499999. Subtotal - Bonds - U.S. Political Subdivisions of States, Territories and Possessions</b>						1,920,650	1,650,000	18,150	XXX
3128M7-R3-2	FHLMC POOL G05606 4.500% 07/01/39		09/05/2019	TD Securities		745,794	686,874	859	1
3132XC-RW-7	FHLMC POOL G67701 3.000% 10/01/46		09/13/2019	SUNTRUST ROBINSON HUP		2,029,009	1,980,124	2,805	1
3137B7-YY-9	FHLMC MULTIFAMILY STRUCTURED P SERIES K037 CLASS A2 3.490% 01/25/24		09/20/2019	Morgan Stanley		950,344	900,000	2,094	1
3138WF-VF-0	FNMA POOL AS6013 4.000% 10/01/45		09/27/2019	BANK OF AMERICA MERRILL		1,521,847	1,435,493	4,625	1
3138WQ-AV-4	FNMA POOL AT2719 3.000% 05/01/43		08/20/2019	Stephens Inc		628,637	607,104	557	1
3140FX-HH-8	FNMA POOL BF0231 3.000% 04/01/42		09/23/2019	JP Morgan		930,936	904,919	679	1
3140J6-GR-2	FNMA POOL BM2007 4.000% 09/01/48		09/23/2019	Wells Fargo		1,014,697	973,039	973	1
3140X4-J9-8	FNMA POOL FM1187 4.000% 03/01/47		07/03/2019	JP Morgan		1,088,733	1,035,964	1,612	1
31418C-S4-7	FNMA POOL MA3238 3.500% 01/01/48		09/27/2019	Stephens Inc		841,039	813,335	2,293	1
602248-K0-8	MILWAUKEE CNTY WI ARPT REVENUE SERIES A 5.000% 12/01/28		07/10/2019	RBC Capital Markets		421,757	350,000	1,993	1FE
786106-EP-5	SACRAMENTO CNTY CA 7.680% 08/15/21		09/30/2019	ML CAPITAL MARKETS		1,713,600	1,600,000	16,043	2FE
959878-QN-2	WSTRN WASHINGTON UNIV WA 4.000% 04/01/32		09/20/2019	FIFTH THIRD SECURITIES		1,004,710	875,000	0	1FE
<b>3199999. Subtotal - Bonds - U.S. Special Revenues</b>						12,891,103	12,161,852	34,533	XXX
06540R-AE-4	BANK SERIES 2017-BNK9 CLASS A4 3.538% 11/15/54		09/20/2019	Wells Fargo		727,313	675,000	1,526	1FM
254709-AG-3	DISCOVER FINANCIAL SVS 5.200% 04/27/22		07/01/2019	Keybank Capital Markets Inc		429,080	400,000	3,813	2FE
50587K-AA-9	LAFARGEHOLCIM FINANCE US SERIES 144A 3.500% 09/22/26		07/30/2019	MARKETAXESS EUROPE LII		1,578,544	1,575,000	19,753	2FE
65339K-AS-9	NEXTERA ENERGY CAPITAL 2.403% 09/01/21		08/05/2019	Goldman Sachs & Co		1,603,920	1,600,000	0	2FE
674599-C0-6	OCCIDENTAL PETROLEUM COR 3.608% 08/15/22		08/06/2019	Citigroup Global Markets		1,600,000	1,600,000	0	2FE
89176L-AA-2	TOWD POINT MORTGAGE TRUST SERIES 2018-6 CLASS A1A 144A 3.750% 03/25/58		07/01/2019	Wells Fargo		0	0	0	1FM
94986J-SZ-6	WELLS FARGO BANK NA SERIES BKNT 2.762% 09/09/22		09/04/2019	Wells Fargo		2,000,000	2,000,000	0	1FE
96145D-AB-1	WESTROCK CO SERIES III 3.000% 09/15/24		07/12/2019	Credit Suisse Securities		751,973	750,000	7,563	2FE
98956P-AQ-5	ZIMMER BIONET HOLDINGS 3.700% 03/19/23		09/20/2019	MESIROW		1,611,148	1,550,000	797	2FE
89114Q-CC-0	TORONTO DOMINION BANK SERIES GMITN 2.409% 03/17/21	A	09/10/2019	TD Securities		1,600,000	1,600,000	0	1FE
606822-BJ-2	MITSUBISHI UFJ FIN GRP 2.801% 07/18/24	D	07/11/2019	Morgan Stanley		900,000	900,000	0	1FE
90352J-AA-1	LBS GROUP FUNDING SWITZE SERIES 144A 3.491% 05/23/23	D	09/27/2019	NATWEST CAPITAL MARKETS		410,672	400,000	4,965	1FE
<b>3899999. Subtotal - Bonds - Industrial and Miscellaneous (Unaffiliated)</b>						13,212,650	13,050,000	38,417	XXX
<b>8399997. Total - Bonds - Part 3</b>						43,324,877	42,369,207	108,694	XXX
<b>8399998. Total - Bonds - Part 5</b>						XXX	XXX	XXX	XXX
<b>8399999. Total - Bonds</b>						43,324,877	42,369,207	108,694	XXX
<b>8999997. Total - Preferred Stocks - Part 3</b>						0	XXX	0	XXX
<b>8999998. Total - Preferred Stocks - Part 5</b>						XXX	XXX	XXX	XXX
<b>8999999. Total - Preferred Stocks</b>						0	XXX	0	XXX
<b>9799997. Total - Common Stocks - Part 3</b>						0	XXX	0	XXX
<b>9799998. Total - Common Stocks - Part 5</b>						XXX	XXX	XXX	XXX
<b>9799999. Total - Common Stocks</b>						0	XXX	0	XXX
<b>9899999. Total - Preferred and Common Stocks</b>						0	XXX	0	XXX
<b>9999999 - Totals</b>						43,324,877	XXX	108,694	XXX

(a) For all common stock bearing the NAIC market indicator "U" provide: the number of such issues .....

STATEMENT AS OF SEPTEMBER 30, 2019 OF THE Compcare Health Services Insurance Corporation

**SCHEDULE D - PART 4**

Show All Long-Term Bonds and Stock Sold, Redeemed or Otherwise Disposed of During the Current Quarter

1	2	3	4	5	6	7	8	9	10	Change In Book/Adjusted Carrying Value					16	17	18	19	20	21	22
										11	12	13	14	15							
CUSIP Identification	Description	Foreign	Disposal Date	Name of Purchaser	Number of Shares of Stock	Consideration	Par Value	Actual Cost	Prior Year Book/Adjusted Carrying Value	Unrealized Valuation Increase/(Decrease)	Current Year's (Amortization)/Accretion	Current Year's Other Than Temporary Impairment Recognized	Total Change in Book/Adjusted Carrying Value (11 + 12 - 13)	Total Foreign Exchange in Book /Adjusted Carrying Value	Book/Adjusted Carrying Value at Disposal Date	Foreign Exchange Gain (Loss) on Disposal	Realized Gain (Loss) on Disposal	Total Gain (Loss) on Disposal	Bond Interest/Stock Dividends Received During Year	Stated Contractual Maturity Date	NAIC Designation and Administrative Symbol /Market Indicator (a)
36179M-E3-0	GNMA POOL MA0154 3.500% 06/20/42		09/01/2019	Paydown		28,775	28,775	30,299	30,229	.0	(1,453)	.0	(1,453)	.0	28,775	.0	.0	.0	.672	06/20/2042	1
36179M-E4-8	GNMA POOL MA0155 4.000% 06/20/42		09/01/2019	Paydown		8,046	8,046	8,652	8,046	.0	(605)	.0	(605)	.0	8,046	.0	.0	.0	.214	06/20/2042	1
36179M-NH-9	GNMA POOL MA0392 3.500% 09/20/42		09/01/2019	Paydown		15,366	15,366	16,622	16,536	.0	(1,169)	.0	(1,169)	.0	15,366	.0	.0	.0	.360	09/20/2042	1
36179M-Y4-7	GNMA POOL MA0699 3.500% 01/20/43		09/01/2019	Paydown		28,081	28,081	29,797	29,731	.0	(1,650)	.0	(1,650)	.0	28,081	.0	.0	.0	.658	01/20/2043	1
36179R-F9-5	GNMA II POOL MA2892 3.500% 06/20/45		09/01/2019	Paydown		26,831	26,831	27,929	27,894	.0	(1,064)	.0	(1,064)	.0	26,831	.0	.0	.0	.628	06/20/2045	1
36179R-Q2-8	GNMA II POOL MA3173 3.500% 10/20/45		09/01/2019	Paydown		65,887	65,887	66,330	66,324	.0	(437)	.0	(437)	.0	65,887	.0	.0	.0	1,550	10/20/2045	1
36179S-LR-6	GNMA II POOL MA3936 3.000% 09/20/46		08/01/2019	Paydown		.0	.0	.0	.0	.0	.0	.0	.0	.0	.0	.0	.0	.0	.0	09/20/2046	1
36179T-AM-7	GNMA II POOL MA4512 4.500% 06/20/47		09/01/2019	Paydown		53,558	53,558	55,558	55,531	.0	(1,973)	.0	(1,973)	.0	53,558	.0	.0	.0	1,600	06/20/2047	1
3620ZF-HY-5	GNMA II POOL 004747 5.000% 07/20/40		09/01/2019	Paydown		10,302	10,302	10,965	10,916	.0	(614)	.0	(614)	.0	10,302	.0	.0	.0	.346	07/20/2040	1
912828-SM-8	US TREASURY N/B 3.125% 11/15/28		09/20/2019	BANK OF AMERICA MERRILL		474,323	425,000	469,027	.0	.0	(65)	.0	(65)	.0	468,943	.0	5,380	5,380	4,764	11/15/2028	1
912828-YE-4	US TREASURY N/B 1.250% 08/31/24		09/23/2019	Various		8,989,629	9,150,000	8,975,936	.0	.0	23	.0	23	.0	8,975,959	.0	13,670	13,670	7,618	08/31/2024	1
0599999	Subtotal - Bonds - U.S. Governments					9,700,798	9,811,846	9,691,156	245,813	0	(9,027)	0	(9,027)	0	9,681,748	0	19,050	19,050	18,410	XXX	XXX
20775C-TX-2	CONNECTICUT ST HSG FIN AUTH HS 4.000% 11/15/47		09/12/2019	Call	100,000	35,000	35,000	37,905	37,798	.0	(47)	.0	(47)	.0	37,751	.0	(2,751)	(2,751)	1,155	11/15/2047	1FE
3128MA-AA-7	FHLMC GOLD POOL G07801 4.000% 10/01/44		09/01/2019	Paydown		51,807	51,807	55,294	55,294	.0	(3,487)	.0	(3,487)	.0	51,807	.0	.0	.0	1,383	10/01/2044	1
3128MA-BS-7	FHLMC GOLD POOL G07849 3.500% 05/01/44		09/01/2019	Paydown		21,281	21,281	22,249	22,203	.0	(922)	.0	(922)	.0	21,281	.0	.0	.0	.498	05/01/2044	1
3128ME-GK-2	FHLMC GOLD POOL G16074 3.000% 02/01/32		09/01/2019	Paydown		43,162	43,162	44,494	44,402	.0	(1,239)	.0	(1,239)	.0	43,162	.0	.0	.0	.869	02/01/2032	1
3128MJ-GA-2	FHLMC GOLD POOL G08192 5.500% 04/01/37		09/01/2019	Paydown		1,369	1,369	1,345	1,347	.0	22	.0	22	.0	1,369	.0	.0	.0	.49	04/01/2037	1
3128MJ-JP-6	FHLMC GOLD POOL G08269 5.500% 05/01/38		09/01/2019	Paydown		1,233	1,233	1,216	1,217	.0	16	.0	16	.0	1,233	.0	.0	.0	.747	05/01/2038	1
3128MJ-S3-5	FHLMC GOLD POOL G08537 3.000% 07/01/43		09/01/2019	Paydown		37,241	37,241	37,375	37,369	.0	(128)	.0	(128)	.0	37,241	.0	.0	.0	.478	07/01/2043	1
3128MJ-S6-8	FHLMC GOLD POOL G08540 3.000% 08/01/43		09/01/2019	Paydown		69,132	69,132	67,657	67,759	.0	1,373	.0	1,373	.0	69,132	.0	.0	.0	1,378	08/01/2043	1
3128MJ-SY-7	FHLMC GOLD POOL G08534 3.000% 06/01/43		09/01/2019	Paydown		85,853	85,853	83,706	83,873	.0	1,980	.0	1,980	.0	85,853	.0	.0	.0	1,724	06/01/2043	1
3128MJ-YF-2	FHLMC GOLD POOL G08677 4.000% 11/01/45		09/01/2019	Paydown		45,188	45,188	46,353	.0	(1,165)	.0	(1,165)	.0	45,188	.0	.0	.0	.920	11/01/2045	1	
3128MM-TA-1	FHLMC GOLD POOL G18544 2.500% 03/01/30		09/01/2019	Paydown		25,977	25,977	26,448	26,370	.0	(393)	.0	(393)	.0	25,977	.0	.0	.0	.432	03/01/2030	1
3128P7-TY-9	FHLMC GOLD POOL G91467 3.500% 07/01/32		09/01/2019	Paydown		26,706	26,706	28,462	28,277	.0	(1,571)	.0	(1,571)	.0	26,706	.0	.0	.0	.615	07/01/2032	1
312906-BR-0	FHLMC SERIES 1094 CLASS K 7.000% 06/15/21		09/01/2019	Paydown		713	713	729	717	.0	(3)	.0	(3)	.0	713	.0	.0	.0	.32	06/15/2021	1
312912-AN-8	FHLMC SERIES 1367 CLASS K 5.500% 09/15/22		09/01/2019	Paydown		117	117	116	117	.0	1	.0	1	.0	117	.0	.0	.0	.4	09/15/2022	1
312925-ZS-4	FHLMC POOL C00785 6.500% 06/01/29		09/01/2019	Paydown		276	276	290	286	.0	(10)	.0	(10)	.0	276	.0	.0	.0	11	06/01/2029	1
31292K-ZX-4	FHLMC POOL C03490 4.500% 08/01/40		09/01/2019	Paydown		27,506	27,506	28,817	28,698	.0	(1,192)	.0	(1,192)	.0	27,506	.0	.0	.0	.814	08/01/2040	1
31292S-AD-2	FHLMC POOL C09004 3.500% 07/01/42		09/01/2019	Paydown		58,422	58,422	62,156	61,819	.0	(3,397)	.0	(3,397)	.0	58,422	.0	.0	.0	1,368	07/01/2042	1
312941-3N-5	FHLMC POOL A93505 4.500% 08/01/40		09/01/2019	Paydown		24,662	24,662	25,798	25,703	.0	(1,041)	.0	(1,041)	.0	24,662	.0	.0	.0	.737	08/01/2040	1
31292U-KH-6	FHLMC POOL G08996 3.500% 06/01/42		09/01/2019	Paydown		32,883	32,883	34,271	34,237	.0	(1,354)	.0	(1,354)	.0	32,883	.0	.0	.0	.765	06/01/2042	1
3129HL-M3-4	FHLMC POOL Q10378 3.000% 08/01/42		09/01/2019	Paydown		33,345	33,345	35,080	34,903	.0	(1,558)	.0	(1,558)	.0	33,345	.0	.0	.0	.663	08/01/2042	1
3129J4-KS-7	FHLMC GOLD POOL G31004 3.500% 08/01/34		09/01/2019	Paydown		58,582	58,582	61,399	61,399	.0	(2,816)	.0	(2,816)	.0	58,582	.0	.0	.0	1,336	08/01/2034	1
3129KC-R9-8	FHLMC POOL G67712 4.000% 06/01/48		09/01/2019	Paydown		54,877	54,877	57,462	57,534	.0	(2,585)	.0	(2,585)	.0	54,877	.0	.0	.0	.560	06/01/2048	1
3129KC-RV-9	FHLMC GOLD POOL G67700 3.500% 08/01/46		09/01/2019	Paydown		115,515	115,515	117,601	117,534	.0	(2,019)	.0	(2,019)	.0	115,515	.0	.0	.0	2,696	08/01/2046	1
3129KC-RX-5	FHLMC POOL G67702 4.000% 01/01/47		09/01/2019	Paydown		48,526	48,526	49,815	49,805	.0	(1,279)	.0	(1,279)	.0	48,526	.0	.0	.0	1,301	01/01/2047	1
31335A-ZF-4	FHLMC GOLD POOL G60774 3.000% 10/01/45		09/01/2019	Paydown		28,979	28,979	28,956	28,956	.0	23	.0	23	.0	28,979	.0	.0	.0	.580	10/01/2045	1
31335A-FW-3	FHLMC GOLD POOL G60181 4.500% 01/01/45		09/01/2019	Paydown		47,460	47,460	50,493	.0	(3,033)	.0	(3,033)	.0	47,460	.0	.0	.0	.549	01/01/2045	1	
31335A-NJ-3	FHLMC GOLD POOL G60393 3.500% 01/01/46		09/01/2019	Paydown		28,563	28,563	30,018	29,962	.0	(1,400)	.0	(1,400)	.0	28,563	.0	.0	.0	.675	01/01/2046	1
31335A-TG-3	FHLMC GOLD POOL G60551 4.000% 04/01/46		09/01/2019	Paydown		86,758	86,758	91,753	91,632	.0	(4,874)	.0	(4,874)	.0	86,758	.0	.0	.0	2,315	04/01/2046	1
31335B-C7-9	FHLMC GOLD POOL G60994 3.500% 01/01/45		09/01/2019	Paydown		50,926	50,926	51,014	51,013	.0	(86)	.0	(86)	.0	50,926	.0	.0	.0	1,216	01/01/2045	1
31335C-BS-2	FHLMC GOLD POOL G61849 4.500% 11/01/46		09/01/2019	Paydown		46,024	46,024	48,936	.0	(2,912)	.0	(2,912)	.0	46,024	.0	.0	.0	.698	11/01/2046	1	
31340Y-G4-5	FNMA SERIES 74 CLASS F 6.000% 10/15/20		08/15/2019	Paydown		.6	.6	.6	.6	.0	.0	.0	.0	.6	.0	.0	.0	.0	.0	10/15/2020	1
31358E-D8-2	FNMA SERIES 1990-93 CLASS G 5.500% 08/25/20		09/01/2019	Paydown		.19	.19	.19	.19	.0	.0	.0	.0	.19	.0	.0	.0	.0	.1	08/25/2020	1
31358F-BC-2	FNMA SERIES 1990-108 CLASS G 7.000% 09/25/20		09/01/2019	Paydown		.24	.24	.24	.24	.0	.0	.0	.0	.24	.0	.0	.0	.0	.1	09/25/2020	1
31358F-VB-2	FNMA SERIES 1991-1 CLASS G 7.000% 01/25/21		09/01/2019	Paydown		.108	.108	.112	.108	.0	.0	.0	.0	.108	.0	.0	.0	.0	.5	01/25/2021	1
31358G-Y4-3	FNMA SERIES 1991-56 CLASS M 6.750% 06/25/21		09/01/2019	Paydown		.20	.20	.20	.20	.0	.0	.0	.0	.20	.0	.0	.0	.0	.1	06/25/2021	1
31358U-C9-5	FNMA SERIES 1993-58 CLASS H 5.500% 04/25/23		09/01/2019	Paydown		.214	.214	.220	.216	.0	(2)	.0	(2)	.0	.214	.0	.0	.0	.8	04/25/2023	1

E05

STATEMENT AS OF SEPTEMBER 30, 2019 OF THE Compcare Health Services Insurance Corporation

**SCHEDULE D - PART 4**

Show All Long-Term Bonds and Stock Sold, Redeemed or Otherwise Disposed of During the Current Quarter

1 CUSIP Ident- ification	2 Description	3 For- eign	4 Disposal Date	5 Name of Purchaser	6 Number of Shares of Stock	7 Consid- eration	8 Par Value	9 Actual Cost	10 Prior Year Book/ Adjusted Carrying Value	Change In Book/Adjusted Carrying Value					16 Book/ Adjusted Carrying Value at Disposal Date	17 Foreign Exchange Gain (Loss) on Disposal	18 Realized Gain (Loss) on Disposal	19 Total Gain (Loss) on Disposal	20 Bond Interest/ Stock Dividends Received During Year	21 Stated Con- tractual Maturity Date	22 NAIC Desig- nation and Admini- strative Symbol /Market Indicator (a)
										11 Unrealized Valuation Increase/ (Decrease)	12 Current Year's (Amor- tization)/ Accretion	13 Current Year's Other Than Temporary Impairment Recog- nized	14 Total Change in Book/ Adjusted Carrying Value (11 + 12 - 13)	15 Total Foreign Exchange Change in Book /Adjusted Carrying Value							
31359U-3Z-6	FNMA SERIES 1998-66 CLASS C 6.000% 12/25/28		09/01/2019	Paydown		43	43	43	43	0	0	0	0	0	43	0	0	0	2	12/25/2028	1
31371L-EW-5	FNMA POOL 254949 5.000% 11/01/33 FHLIC MULTIFAMILY STRUCTURED SERIES K015		09/01/2019	Paydown		397	397	397	397	0	1	0	1	0	397	0	0	0	13	11/01/2033	1
3137AH-6C-7	CLASS A2 3.230% 07/25/21		09/01/2019	Paydown		61,602	61,602	62,218	61,626	0	(24)	0	(24)	0	61,602	0	0	0	1,336	07/25/2021	1
3138A2-BE-8	FNMA POOL AH0936 3.500% 12/01/40		09/01/2019	Paydown		17,946	17,946	18,142	18,117	0	(171)	0	(171)	0	17,946	0	0	0	419	12/01/2040	1
3138E0-RK-7	FNMA POOL AJ7689 4.000% 12/01/41		09/01/2019	Paydown		14,166	14,166	15,016	14,939	0	(772)	0	(772)	0	14,166	0	0	0	380	12/01/2041	1
3138E2-JY-2	FNMA POOL AJ9278 3.500% 12/01/41		09/01/2019	Paydown		68,866	68,866	70,998	70,916	0	(2,050)	0	(2,050)	0	68,866	0	0	0	1,590	12/01/2041	1
3138EJ-7F-9	FNMA POOL AL2693 4.000% 08/01/42		09/01/2019	Paydown		30,838	30,838	33,151	33,024	0	(2,186)	0	(2,186)	0	30,838	0	0	0	821	08/01/2042	1
3138EM-UX-7	FNMA POOL AL5097 4.500% 09/01/43		09/01/2019	Paydown		32,485	32,485	35,445	35,303	0	(2,818)	0	(2,818)	0	32,485	0	0	0	990	09/01/2043	1
3138EQ-LB-6	FNMA POOL AL7521 5.000% 06/01/39		09/01/2019	Paydown		21,162	21,162	23,278	23,200	0	(2,038)	0	(2,038)	0	21,162	0	0	0	711	06/01/2039	1
3138ER-AZ-3	FNMA POOL AL9023 3.000% 11/01/28		09/01/2019	Paydown		33,817	33,817	33,918	33,908	0	(91)	0	(91)	0	33,817	0	0	0	672	11/01/2028	1
3138ER-MN-7	FNMA POOL AL9364 3.000% 10/01/36		09/01/2019	Paydown		31,646	31,646	31,899	31,876	0	(230)	0	(230)	0	31,646	0	0	0	643	10/01/2036	1
3138ER-TM-2	FNMA POOL AL9555 4.000% 02/01/45		09/01/2019	Paydown		49,594	49,594	52,438	52,356	0	(2,763)	0	(2,763)	0	49,594	0	0	0	1,311	02/01/2045	1
3138ER-Z6-0	FNMA POOL AL9764 4.500% 02/01/46		09/01/2019	Paydown		33,403	33,403	35,893	35,833	0	(2,430)	0	(2,430)	0	33,403	0	0	0	1,019	02/01/2046	1
3138LQ-3J-1	FNMA POOL A00800 3.000% 04/01/27		09/01/2019	Paydown		34,074	34,074	36,012	35,455	0	(1,381)	0	(1,381)	0	34,074	0	0	0	687	04/01/2027	1
3138LT-JQ-2	FNMA POOL A02970 3.000% 05/01/42		09/01/2019	Paydown		33,874	33,874	35,007	34,880	0	(1,006)	0	(1,006)	0	33,874	0	0	0	694	05/01/2042	1
3138LU-S3-0	FNMA POOL A04137 3.500% 06/01/42		09/01/2019	Paydown		28,179	28,179	29,579	29,455	0	(1,277)	0	(1,277)	0	28,179	0	0	0	666	06/01/2042	1
3138LY-5E-3	FNMA POOL A08044 3.500% 07/01/42		09/01/2019	Paydown		63,113	63,113	62,181	62,188	0	925	0	925	0	63,113	0	0	0	1,460	07/01/2042	1
3138WH-U6-7	FNMA POOL AS7804 4.000% 08/01/46		09/01/2019	Paydown		65,982	65,982	67,848	67,816	0	(1,834)	0	(1,834)	0	65,982	0	0	0	1,778	08/01/2046	1
3138WQ-A3-6	FNMA POOL AT2725 3.000% 05/01/43		09/01/2019	Paydown		37,744	37,744	37,290	37,316	0	428	0	428	0	37,744	0	0	0	757	05/01/2043	1
3138XQ-Y3-6	FNMA POOL AU1629 3.000% 07/01/43		09/01/2019	Paydown		39,354	39,354	39,305	39,304	0	50	0	50	0	39,354	0	0	0	785	07/01/2043	1
3138XB-U8-5	FNMA POOL AV0606 4.000% 11/01/43		09/01/2019	Paydown		24,216	24,216	25,479	25,412	0	(1,197)	0	(1,197)	0	24,216	0	0	0	669	11/01/2043	1
3138YQ-YH-9	FNMA POOL AY3411 2.500% 04/01/30		09/01/2019	Paydown		43,127	43,127	42,419	42,450	0	677	0	677	0	43,127	0	0	0	723	04/01/2030	1
31402C-4H-2	FNMA POOL 725424 5.000% 04/01/34		09/01/2019	Paydown		11,023	11,023	11,463	11,463	0	(440)	0	(440)	0	11,023	0	0	0	406	04/01/2034	1
31402D-C2-4	FNMA POOL 725589 5.000% 07/01/34		09/01/2019	Paydown		12,023	12,023	12,367	12,316	0	(293)	0	(293)	0	12,023	0	0	0	400	07/01/2034	1
31403C-6L-0	FNMA POOL 745275 5.000% 02/01/36		09/01/2019	Paydown		11,019	11,019	12,008	11,900	0	(882)	0	(882)	0	11,019	0	0	0	372	02/01/2036	1
31403D-BY-4	FNMA POOL 745355 5.000% 03/01/36		09/01/2019	Paydown		14,427	14,427	14,441	14,433	0	(6)	0	(6)	0	14,427	0	0	0	487	03/01/2036	1
31403D-DX-4	FNMA POOL 745418 5.500% 04/01/36		09/01/2019	Paydown		17,117	17,117	17,120	17,113	0	4	0	4	0	17,117	0	0	0	627	04/01/2036	1
31403D-WF-2	FNMA POOL 745946 5.500% 11/01/36		09/01/2019	Paydown		3,170	3,170	3,200	3,196	0	(27)	0	(27)	0	3,170	0	0	0	117	11/01/2036	1
31405H-YD-4	FNMA POOL 790108 6.000% 08/01/34		09/01/2019	Paydown		110	110	114	114	0	(3)	0	(3)	0	110	0	0	0	4	08/01/2034	1
3140FQ-TZ-0	FNMA POOL BE5067 3.500% 11/01/46		09/01/2019	Paydown		33,629	33,629	34,549	34,519	0	(890)	0	(890)	0	33,629	0	0	0	797	11/01/2046	1
3140J5-SS-9	FNMA POOL BM1428 3.500% 09/01/43		09/01/2019	Paydown		33,144	33,144	34,242	34,216	0	(1,071)	0	(1,071)	0	33,144	0	0	0	773	09/01/2043	1
3140J6-GR-2	FNMA POOL BM2007 4.000% 09/01/48		09/01/2019	Paydown		92,557	92,557	94,987	94,987	0	(2,430)	0	(2,430)	0	92,557	0	0	0	1,288	09/01/2048	1
3140J7-N2-7	FNMA POOL BM3108 4.500% 08/01/46		09/01/2019	Paydown		29,881	29,881	31,963	31,925	0	(2,044)	0	(2,044)	0	29,881	0	0	0	910	08/01/2046	1
3140J8-MH-0	FNMA POOL BM3972 2.500% 04/01/38		09/01/2019	Paydown		30,140	30,140	29,253	29,253	0	888	0	888	0	30,140	0	0	0	251	04/01/2038	1
3140J9-Q3-8	FNMA POOL BM4973 3.500% 05/01/43		09/01/2019	Paydown		103,171	103,171	105,356	105,356	0	(2,185)	0	(2,185)	0	103,171	0	0	0	753	05/01/2043	1
3140J9-SF-9	FNMA POOL BM5017 3.000% 03/01/30		09/01/2019	Paydown		76,903	76,903	77,594	77,594	0	(691)	0	(691)	0	76,903	0	0	0	587	03/01/2030	1
3140J9-VF-5	FNMA POOL BM5113 3.000% 11/01/33		09/01/2019	Paydown		99,716	99,716	101,259	101,259	0	(1,542)	0	(1,542)	0	99,716	0	0	0	508	11/01/2033	1
3140K4-J9-8	FNMA POOL FHM187 4.000% 03/01/47		09/01/2019	Paydown		35,541	35,541	37,352	37,352	0	(1,810)	0	(1,810)	0	35,541	0	0	0	164	03/01/2047	1
31410K-JY-1	FNMA POOL 889579 6.000% 05/01/38		09/01/2019	Paydown		3,100	3,100	3,394	3,374	0	(274)	0	(274)	0	3,100	0	0	0	123	05/01/2038	1
31417S-BL-3	FNMA POOL AC5442 4.500% 11/01/39		09/01/2019	Paydown		25,218	25,218	26,219	26,118	0	(900)	0	(900)	0	25,218	0	0	0	765	11/01/2039	1
31417Y-TT-4	FNMA POOL MA0561 4.000% 11/01/40		09/01/2019	Paydown		19,991	19,991	20,984	20,945	0	(954)	0	(954)	0	19,991	0	0	0	541	11/01/2040	1
31418A-AJ-7	FNMA POOL MA0908 4.000% 11/01/31		09/01/2019	Paydown		18,027	18,027	19,460	19,264	0	(1,237)	0	(1,237)	0	18,027	0	0	0	483	11/01/2031	1
31418A-AV-0	FNMA POOL MA0919 3.500% 12/01/31		09/01/2019	Paydown		80,293	80,293	82,401	82,401	0	(2,108)	0	(2,108)	0	80,293	0	0	0	691	12/01/2031	1
31418A-M3-9	FNMA POOL MA1277 2.500% 12/01/27		09/01/2019	Paydown		32,393	32,393	33,874	33,459	0	(1,065)	0	(1,065)	0	32,393	0	0	0	540	12/01/2027	1
31418A-YE-2	FNMA POOL MA1608 3.500% 10/01/33		09/01/2019	Paydown		28,874	28,874	30,706	30,559	0	(1,685)	0	(1,685)	0	28,874	0	0	0	684	10/01/2033	1
31418H-PG-9	FNMA POOL AD8522 4.000% 08/01/40		09/01/2019	Paydown		14,645	14,645	15,230	15,178	0	(533)	0	(533)	0	14,645	0	0	0	400	08/01/2040	1
31419A-G2-7	FNMA POOL AE0216 4.000% 08/01/40		09/01/2019	Paydown		34,213	34,213	36,688	36,521	0	(2,309)	0	(2,309)	0	34,213	0	0	0	897	08/01/2040	1
31419A-NM-5	FNMA POOL AE0395 4.500% 10/01/40		09/01/2019	Paydown		47,958	47,958	51,180	51,180	0	(3,222)	0	(3,222)	0	47,958	0	0	0	369	10	



STATEMENT AS OF SEPTEMBER 30, 2019 OF THE Compcare Health Services Insurance Corporation

**SCHEDULE D - PART 4**

Show All Long-Term Bonds and Stock Sold, Redeemed or Otherwise Disposed of During the Current Quarter

1	2	3	4	5	6	7	8	9	10	Change In Book/Adjusted Carrying Value					16	17	18	19	20	21	22
										11	12	13	14	15							
CUSIP Identification	Description	Foreign	Disposal Date	Name of Purchaser	Number of Shares of Stock	Consideration	Par Value	Actual Cost	Prior Year Book/Adjusted Carrying Value	Unrealized Valuation Increase/(Decrease)	Current Year's (Amortization)/Accretion	Current Year's Other Than Temporary Impairment Recognized	Total Change in Book/Adjusted Carrying Value (11 + 12 - 13)	Total Foreign Exchange in Book /Adjusted Carrying Value	Book/Adjusted Carrying Value at Disposal Date	Foreign Exchange Gain (Loss) on Disposal	Realized Gain (Loss) on Disposal	Total Gain (Loss) on Disposal	Bond Interest/Stock Dividends Received During Year	Stated Contractual Maturity Date	NAIC Designation and Administrative Symbol /Market Indicator (a)
649883-L2-9	NEW YORK ST MTG AGY HOMEOWNER SERIES 195 4.000% 10/01/46		08/29/2019	Call	100.0000	35,000	35,000	38,357	38,140	0	(53)	0	(53)	0	38,087	0	(3,087)	(3,087)	1,276	10/01/2046	1FE
762315-QU-6	RHODE ISLAND ST STUDENT LOAN A SERIES A 3.500% 12/01/34		09/17/2019	Redemption	100.0000	10,000	10,000	9,938	9,939	0	2	0	2	0	9,941	0	59	59	278	12/01/2034	1FE
88045R-SP-8	TENNESSEE HSG DEV AGY 4.500% 07/01/28		08/01/2019	Call	100.0000	20,000	20,000	21,486	20,187	0	(108)	0	(108)	0	20,079	0	(79)	(79)	975	07/01/2028	1FE
88045R-TQ-5	TENNESSEE HSG DEV AGY 4.500% 01/01/28		08/01/2019	Call	100.0000	45,000	45,000	47,049	46,251	0	(67)	0	(67)	0	46,183	0	(1,183)	(1,183)	2,119	01/01/2028	1FE
882750-LZ-3	TEXAS ST DEPT HSG & CMNTY AFRS 5.000% 07/01/29		09/03/2019	Call	100.0000	25,000	25,000	26,607	25,382	0	(105)	0	(105)	0	25,277	0	(277)	(277)	1,333	07/01/2029	1FE
3199999	Subtotal - Bonds - U.S. Special Revenues					3,749,730	3,749,730	3,853,971	3,062,083	0	(87,654)	0	(87,654)	0	3,757,048	0	(7,318)	(7,318)	81,198	XXX	XXX
00438Q-AC-8	ACCREDITED MORTGAGE LOAN TRUST SERIES 2007-1 CLASS A3 2.148% 02/25/37		09/25/2019	Paydown		53,115	53,115	51,987	52,840	0	275	0	275	0	53,115	0	0	0	908	02/25/2037	1FM
03072S-LU-7	AMERIQUEST MORTGAGE SECURITIES SERIES 2003-11 CLASS AF6 5.083% 12/25/33		09/01/2019	Paydown		7,580	7,580	7,522	7,536	0	44	0	44	0	7,580	0	0	0	243	12/25/2033	1FM
04544N-AD-6	ASSET BACKED SECURITIES CORP H SERIES 2006-HE6 CLASS A4 2.178% 11/25/36		09/25/2019	Paydown		18,479	18,479	17,740	17,999	0	480	0	480	0	18,479	0	0	0	346	11/25/2036	1FM
05948K-YR-4	BANC OF AMERICA ALT LN TR SERIES 2005-3 CLASS 2A1 5.500% 04/25/20		09/01/2019	Paydown		679	679	693	677	2	0	0	2	0	679	0	0	0	25	04/25/2020	3FM
05952D-AB-4	BANC OF AMERICA FUNDING SERIES 07-A CLASS 2A1 2.204% 02/20/47		09/20/2019	Paydown		24,708	24,708	21,205	21,502	0	3,206	0	3,206	0	24,708	0	0	0	411	02/20/2047	1FM
07387A-EG-6	BEAR STEARNS ADJ RATE MORTGAGE SERIES 2005-9 CLASS A1 4.050% 10/25/35		09/01/2019	Paydown		29,611	29,611	28,658	28,687	0	924	0	924	0	29,611	0	0	0	887	10/25/2035	1FM
12667F-J6-3	COUNTRYWIDE ALT LN TR SERIES 2004-30CB CLASS 3A1 5.000% 02/25/20		09/01/2019	Paydown		5,752	5,797	5,631	5,753	0	(1)	0	(1)	0	5,752	0	0	0	191	02/25/2020	1FM
12667F-YW-9	COUNTRYWIDE ALT LN TR SERIES 2004-28CB CLASS 7A1 5.000% 01/25/20		09/01/2019	Paydown		352	352	351	319	31	1	0	32	0	352	0	0	0	11	01/25/2020	1FM
23243W-AC-2	COUNTRYWIDE ASSET-BACKED CERTI SERIES 2006-18 CLASS 2A2 2.183% 03/25/37		09/25/2019	Paydown		26,261	26,261	25,678	25,961	0	300	0	300	0	26,261	0	0	0	442	03/25/2037	1FM
24704A-AD-8	DELL EQUIPMENT FINANCE TRUST SERIES 2018-1 CLASS A3 144A 3.180% 06/22/23		09/17/2019	TD Securities		1,009,141	1,000,000	999,896	999,915	0	24	0	24	0	999,939	0	9,202	9,202	23,585	06/22/2023	1FE
251510-CV-3	DEUTSCHE ALT-A SECURITIES INC SERIES 2005-1 CLASS 1A1 2.518% 02/25/35		09/25/2019	Paydown		35,436	35,436	34,218	34,303	0	1,133	0	1,133	0	35,436	0	0	0	700	02/25/2035	1FM
362334-AU-8	GSAA HOME EQUITY TRUST SERIES 06-FF3 CLASS A2B 2.545% 02/25/36		09/25/2019	Paydown		26,025	26,025	25,115	25,733	0	292	0	292	0	26,025	0	0	0	463	02/25/2036	1FM
362334-FS-8	FIRST FRANKLIN MTG LOAN ASSET SERIES 2006-FF4 CLASS A2 2.398% 03/25/36		09/25/2019	Paydown		59,485	59,485	59,039	59,376	0	109	0	109	0	59,485	0	0	0	1,114	03/25/2036	1FM
36242D-H7-1	GSR MORTGAGE LOAN TRUST SERIES 05-AR2 CLASS 2A1 4.743% 04/25/35		09/01/2019	Paydown		8,837	8,837	8,749	8,752	0	85	0	85	0	8,837	0	0	0	275	04/25/2035	1FM
36962G-AD-3	GENERAL ELECTRIC CAP CORP GMTN 6.000% 08/07/19		08/07/2019	Maturity		487,000	487,000	570,214	494,534	0	(7,534)	0	(7,534)	0	487,000	0	0	0	29,220	08/07/2019	2FE
38144R-AC-1	GSAA HOME EQUITY TRUST SERIES 07-8 CLASS A3 2.468% 08/25/37		09/25/2019	Paydown		56,163	56,163	50,897	52,830	0	3,333	0	3,333	0	56,163	0	0	0	1,047	08/25/2037	1FM
43739E-BS-5	HOMEBANC MORTGAGE TRUST SERIES 2005-4 CLASS A1 2.552% 10/25/35		09/25/2019	Paydown		23,259	23,259	21,006	21,820	0	1,439	0	1,439	0	23,259	0	0	0	464	10/25/2035	1FM
449670-DE-5	JMC HOME EQUITY LOAN TRUST SERIES 1997-5 CLASS A10 6.880% 11/20/28		09/01/2019	Paydown		0	0	0	0	0	0	0	0	0	0	0	0	0	0	11/20/2028	1FM
45254N-PA-9	IMPAC CMB TRUST SERIES 05-4 CLASS 1A1A 2.558% 05/25/35		09/25/2019	Paydown		44,831	44,831	41,692	42,181	0	2,650	0	2,650	0	44,831	0	0	0	862	05/25/2035	1FM
46640N-AD-0	JPMBB COMMERCIAL MORTGAGE SECU SERIES 2013-C15 CLASS A4 4.096% 11/15/45		08/01/2019	Paydown		64,942	64,942	69,310	66,915	0	(1,972)	0	(1,972)	0	64,942	0	0	0	2,185	11/15/2045	1FM
50076Q-AU-0	KRAFT FOODS INC 5.375% 02/10/20		09/09/2019	Corporate Action		344,393	340,000	340,000	340,000	0	0	0	0	0	340,000	0	4,393	4,393	19,798	02/10/2020	2FE
550279-AA-1	LUMINENT MORTGAGE TRUST SERIES 05-1 CLASS A1 2.665% 11/25/35		09/25/2019	Paydown		22,112	22,112	19,735	20,074	0	2,038	0	2,038	0	22,112	0	0	0	398	11/25/2035	1FM
576434-M7-6	MASTER ALTERNATIVE LOANS TRUST SERIES 2005-3 CLASS 4A1 5.500% 03/25/20		09/01/2019	Paydown		4,679	4,679	4,612	4,651	0	28	0	28	0	4,679	0	0	0	166	03/25/2020	1FM
59020U-YN-9	MLCC MORTGAGE INVESTORS INC SERIES 05-A5 CLASS A3 4.332% 06/25/35		09/01/2019	Paydown		42,923	42,923	42,064	42,167	0	756	0	756	0	42,923	0	0	0	1,188	06/25/2035	1FM

E05.2

STATEMENT AS OF SEPTEMBER 30, 2019 OF THE Compcare Health Services Insurance Corporation

**SCHEDULE D - PART 4**

Show All Long-Term Bonds and Stock Sold, Redeemed or Otherwise Disposed of During the Current Quarter

1	2	3	4	5	6	7	8	9	10	Change In Book/Adjusted Carrying Value					16	17	18	19	20	21	22	
										11	12	13	14	15								
CUSIP Identification	Description	Foreign	Disposal Date	Name of Purchaser	Number of Shares of Stock	Consideration	Par Value	Actual Cost	Prior Year Book/Adjusted Carrying Value	Unrealized Valuation Increase/(Decrease)	Current Year's (Amortization)/Accretion	Current Year's Other Than Temporary Impairment Recognized	Total Change in Book/Adjusted Carrying Value (11 + 12 - 13)	Total Foreign Exchange Change in Book /Adjusted Carrying Value	Book/Adjusted Carrying Value at Disposal Date	Foreign Exchange Gain (Loss) on Disposal	Realized Gain (Loss) on Disposal	Total Gain (Loss) on Disposal	Bond Interest/Stock Dividends Received During Year	Stated Contractual Maturity Date	NAIC Designation and Administrative Symbol /Market Indicator (a)	
59020U-26-5	MLCC MORTGAGE INVESTORS INC SERIES 05-A10 CLASS A 2.656% 02/25/36		09/25/2019	Paydown		33,046	33,046	30,713	30,833	0	2,213	0	2,213	0	33,046	0	0	0	618	02/25/2036	1FM	
61915R-AA-4	MORTGAGE IT TRUST 2005-2 SERIES 05-2 CLASS 1A1 2.538% 05/25/35		09/25/2019	Paydown		29,867	29,867	28,821	29,071	0	796	0	796	0	29,867	0	0	0	608	05/25/2035	1FM	
61915R-AU-0	MORTGAGE IT TRUST 2005-2 SERIES 05-5 CLASS A1 2.538% 12/25/35		09/25/2019	Paydown		31,245	31,245	29,478	29,846	0	1,400	0	1,400	0	31,245	0	0	0	623	12/25/2035	1FM	
65479A-AD-4	NISSAN AUTO LEASE TRUST SERIES 2017-A CLASS A3 1.910% 04/15/20		09/15/2019	Paydown		459,088	459,088	459,006	459,061	0	27	0	27	0	459,088	0	0	0	5,657	04/15/2020	1FE	
690742-AD-3	OWENS CORNING INC 4.200% 12/15/22		08/09/2019	Corporate Action		1,375,478	1,300,000	1,331,278	0	0	(2,779)	0	(2,779)	0	1,328,499	0	46,979	46,979	36,097	12/15/2022	2FE	
76110H-2X-6	RESIDENTIAL ACCREDIT LOANS INC SERIES 05-QS5 CLASS A1 2.418% 04/25/35		09/25/2019	Paydown		6,503	7,694	6,329	6,442	0	61	0	61	0	6,503	0	0	0	143	04/25/2035	1FM	
76110H-TG-4	RESIDENTIAL ACCREDIT LOANS INC SERIES 2004-QS6 CLASS A1 5.000% 05/25/19		07/01/2019	Paydown		102	107	108	107	0	(5)	0	(5)	0	102	0	0	0	3	05/25/2019	1FM	
761118-AV-0	RESIDENTIAL ACCREDIT LOANS INC SERIES 05-QS9 CLASS A2 2.700% 06/25/35		08/25/2019	Paydown		489,609	495,336	401,222	408,382	0	81,227	0	81,227	0	489,609	0	0	0	10,013	06/25/2035	1FM	
834423-AA-3	SOLVAY FINANCE AMERICA LLC SERIES 144A 3.400% 12/03/20		09/30/2019	Call	101,4231	1,034,516	1,020,000	1,014,869	1,017,876	0	809	0	809	0	1,018,686	0	1,314	1,314	43,127	12/03/2020	2FE	
86359B-V6-5	STRUCTURED ASSET SEC CORP SERIES 05-WF1 CLASS A3 2.678% 02/25/35		09/25/2019	Paydown		88,055	88,055	87,009	87,860	0	195	0	195	0	88,055	0	0	0	1,744	02/25/2035	1FM	
89169E-AA-7	TOWD POINT MORTGAGE TRUST SERIES 2017-5 CLASS A1 144A 2.618% 02/25/57		09/25/2019	Paydown		44,196	44,196	44,196	44,196	0	0	0	0	0	44,196	0	0	0	914	02/25/2057	1FM	
89175J-AA-8	TOWD POINT MORTGAGE TRUST SERIES 2017-6 CLASS A1 144A 2.750% 10/25/57		09/01/2019	Paydown		28,863	28,863	28,946	28,928	0	(65)	0	(65)	0	28,863	0	0	0	534	10/25/2057	1FM	
89176L-AA-2	TOWD POINT MORTGAGE TRUST SERIES 2018-6 CLASS A1A 144A 3.750% 03/25/58		09/01/2019	Paydown		35,559	35,559	36,648	0	0	(1,089)	0	(1,089)	0	35,559	0	0	0	233	03/25/2058	1FM	
92922F-XL-7	WASHINGTON MUTUAL SERIES 2004-CB3 CLASS 1A 6.000% 10/25/34		09/01/2019	Paydown		18,968	18,968	20,117	19,962	0	(994)	0	(994)	0	18,968	0	0	0	789	10/25/2034	1FM	
92922F-XN-3	WASHINGTON MUTUAL SERIES 2004-CB3 CLASS 3A 5.500% 10/25/19		08/01/2019	Paydown		161	161	160	161	0	1	0	1	0	161	0	0	0	5	10/25/2019	1FM	
92937F-AE-1	WF RBS COMMERCIAL MORTGAGE T SERIES 2013-C12 CLASS ASB 2.838% 03/15/48		09/01/2019	Paydown		69,478	69,478	70,811	69,994	0	(516)	0	(516)	0	69,478	0	0	0	1,379	03/15/2048	1FM	
25156P-AN-3	DEUTSCHE TELEKOM INT FIN 6.000% 07/08/19	D	07/08/2019	Maturity		500,000	500,000	495,155	499,673	0	327	0	327	0	500,000	0	0	0	30,000	07/08/2019	2FE	
71654Q-AX-0	PETRILOS MEXICANOS 5.500% 01/21/21	D	09/18/2019	Corporate Action		596,563	575,000	603,383	582,405	0	(2,542)	0	(2,542)	0	579,862	0	16,700	16,700	37,072	01/21/2021	2FE	
853254-BB-5	STANDARD CHARTERED PLC SERIES 144A 2.100% 08/19/19	D	08/19/2019	Maturity		1,000,000	1,000,000	999,300	999,844	0	156	0	156	0	1,000,000	0	0	0	21,000	08/19/2019	1FE	
3899999	Subtotal - Bonds - Industrial and Miscellaneous (Unaffiliated)					8,237,060	8,118,937	8,133,561	6,689,166	33	86,832	0	86,865	0	8,143,955	0	78,588	78,588	275,488	XXX	XXX	
8399997	Total - Bonds - Part 4					21,687,588	21,680,513	21,678,688	9,997,062	33	(9,849)	0	(9,816)	0	21,582,751	0	90,320	90,320	375,096	XXX	XXX	
8399998	Total - Bonds - Part 5					XXX	XXX	XXX	XXX	XXX	XXX	XXX	XXX	XXX	XXX	XXX	XXX	XXX	XXX	XXX	XXX	XXX
8399999	Total - Bonds					21,687,588	21,680,513	21,678,688	9,997,062	33	(9,849)	0	(9,816)	0	21,582,751	0	90,320	90,320	375,096	XXX	XXX	
8999997	Total - Preferred Stocks - Part 4					0	XXX	0	0	0	0	0	0	0	0	0	0	0	0	0	XXX	XXX
8999998	Total - Preferred Stocks - Part 5					XXX	XXX	XXX	XXX	XXX	XXX	XXX	XXX	XXX	XXX	XXX	XXX	XXX	XXX	XXX	XXX	XXX
8999999	Total - Preferred Stocks					0	XXX	0	0	0	0	0	0	0	0	0	0	0	0	0	XXX	XXX
9799997	Total - Common Stocks - Part 4					0	XXX	0	0	0	0	0	0	0	0	0	0	0	0	0	XXX	XXX
9799998	Total - Common Stocks - Part 5					XXX	XXX	XXX	XXX	XXX	XXX	XXX	XXX	XXX	XXX	XXX	XXX	XXX	XXX	XXX	XXX	XXX
9799999	Total - Common Stocks					0	XXX	0	0	0	0	0	0	0	0	0	0	0	0	0	XXX	XXX
9899999	Total - Preferred and Common Stocks					0	XXX	0	0	0	0	0	0	0	0	0	0	0	0	0	XXX	XXX
9999999	Totals					21,687,588	XXX	21,678,688	9,997,062	33	(9,849)	0	(9,816)	0	21,582,751	0	90,320	90,320	375,096	XXX	XXX	

(a) For all common stock bearing the NAIC market indicator "U" provide: the number of such issues.....

Schedule DB - Part A - Section 1 - Options, Caps, Floors, Collars, Swaps and Forwards Open

**NONE**

Schedule DB - Part B - Section 1 - Futures Contracts Open

**NONE**

Schedule DB - Part B - Section 1B - Brokers with whom cash deposits have been made

**NONE**

Schedule DB - Part D - Section 1 - Counterparty Exposure for Derivative Instruments Open

**NONE**

Schedule DB - Part D-Section 2 - Collateral for Derivative Instruments Open - Pledged By

**NONE**

Schedule DB - Part D-Section 2 - Collateral for Derivative Instruments Open - Pledged To

**NONE**

**SCHEDULE DL - PART 1**  
**SECURITIES LENDING COLLATERAL ASSETS**

Reinvested Collateral Assets Owned Current Statement Date

(Securities lending collateral assets reported in aggregate on Line 10 of the Assets page and not included on Schedules A, B, BA, D, DB and E)

1	2	3	4	5	6	7
CUSIP Identification	Description	Code	NAIC Designation and Administrative Symbol/Market Indicator	Fair Value	Book/Adjusted Carrying Value	Maturity Date
912810-EJ-3	UNITED STATES OF AMERICA BOND FIXED 8.125% 15/MAY/2021 USD 100		1	264,269	264,269	05/15/2021
912810-EK-0	UNITED STATES OF AMERICA BOND FIXED 8.125% 15/AUG/2021 USD 100		1	83,412	83,412	08/15/2021
912810-EL-8	UNITED STATES OF AMERICA BOND FIXED 8% 15/NOV/2021 USD 100		1	357,401	357,401	11/15/2021
912810-EM-6	UNITED STATES OF AMERICA BOND FIXED 7.25% 15/AUG/2022 USD 100		1	405	405	08/15/2022
912810-EP-9	UNITED STATES OF AMERICA BOND FIXED 7.125% 15/FEB/2023 USD 100		1	8,791	8,791	02/15/2023
912810-EQ-7	UNITED STATES OF AMERICA BOND FIXED 6.25% 15/AUG/2023 USD 100		1	422,952	422,952	08/15/2023
912810-ET-1	UNITED STATES OF AMERICA BOND FIXED 7.625% 15/FEB/2025 USD 100		1	2	2	02/15/2025
912810-EV-6	UNITED STATES OF AMERICA BOND FIXED 6.875% 15/AUG/2025 USD 100		1	395,572	395,572	08/15/2025
912810-PU-6	UNITED STATES OF AMERICA BOND FIXED 5% 15/MAY/2037 USD 100		1	1	1	05/15/2037
912810-QA-9	UNITED STATES OF AMERICA BOND FIXED 3.5% 15/FEB/2039 USD 100		1	1,284	1,284	02/15/2039
912810-QU-5	UNITED STATES OF AMERICA BOND FIXED 3.125% 15/FEB/2042 USD 100		1	0	0	02/15/2042
912810-RJ-9	UNITED STATES OF AMERICA BOND FIXED 3% 15/NOV/2044 USD 100		1	72,796	72,796	11/15/2044
912810-RQ-3	UNITED STATES OF AMERICA BOND FIXED 2.5% 15/FEB/2046 USD 100		1	42	42	02/15/2046
912828-2U-3	UNITED STATES OF AMERICA NOTES FIXED 1.875% 31/AUG/2024 USD 100		1	14	14	08/31/2024
912828-3D-0	UNITED STATES OF AMERICA NOTES FIXED 2.25% 31/OCT/2024 USD 100		1	466,790	466,790	10/31/2024
912828-3U-2	UNITED STATES OF AMERICA NOTES FIXED 2.375% 31/JAN/2023 USD 100		1	336,422	336,422	01/31/2023
912828-3W-8	UNITED STATES OF AMERICA NOTES FIXED 2.75% 15/FEB/2028 USD 100		1	1	1	02/15/2028
912828-4D-9	UNITED STATES OF AMERICA NOTES FIXED 2.5% 31/MAR/2023 USD 100		1	31,166	31,166	03/31/2023
912828-4L-1	UNITED STATES OF AMERICA NOTES FIXED 2.75% 30/APR/2023 USD 100		1	76,254	76,254	04/30/2023
912828-4N-7	UNITED STATES OF AMERICA NOTES FIXED 2.875% 15/MAY/2028 USD 100		1	5,357	5,357	05/15/2028
912828-4S-6	UNITED STATES OF AMERICA NOTES FIXED 2.75% 31/MAY/2023 USD 100		1	776,335	776,335	05/31/2023
912828-4T-4	UNITED STATES OF AMERICA NOTES FIXED 2.625% 15/JUN/2021 USD 100		1	649,347	649,347	06/15/2021
912828-4U-1	UNITED STATES OF AMERICA NOTES FIXED 2.625% 30/JUN/2023 USD 100		1	1,984	1,984	06/30/2023
912828-4W-7	UNITED STATES OF AMERICA NOTES FIXED 2.75% 15/AUG/2021 USD 100		1	10	10	08/15/2021
912828-5B-2	UNITED STATES OF AMERICA NOTES FIXED 2.75% 30/SEP/2020 USD 100		1	24,758	24,758	09/30/2020
912828-5G-1	UNITED STATES OF AMERICA NOTES FIXED 2.875% 31/OCT/2020 USD 100		1	162,399	162,399	10/31/2020
912828-5P-1	UNITED STATES OF AMERICA NOTES FIXED 2.875% 30/NOV/2023 USD 100		1	43,195	43,195	11/30/2023
912828-5X-4	UNITED STATES OF AMERICA NOTES FIXED 2.5% 31/JAN/2021 USD 100		1	6	6	01/31/2021
912828-5Z-9	UNITED STATES OF AMERICA NOTES FIXED 2.5% 31/JAN/2024 USD 100		1	275,277	275,277	01/31/2024
912828-6N-5	UNITED STATES OF AMERICA NOTES FIXED .5% 15/APR/2024 USD 100		1	10,947	10,947	04/15/2024
912828-6U-9	UNITED STATES OF AMERICA NOTES FIXED 2.125% 15/MAY/2022 USD 100		1	284,242	284,242	05/15/2022
912828-6S-6	UNITED STATES OF AMERICA NOTES FIXED 2.375% 15/AUG/2024 USD 100		1	899,032	899,032	08/15/2024
912828-6W-0	UNITED STATES OF AMERICA NOTES FIXED 2% 30/NOV/2022 USD 100		1	569,984	569,984	11/30/2022
912828-6X-0	UNITED STATES OF AMERICA NOTES FIXED 2.125% 31/DEC/2022 USD 100		1	762,068	762,068	12/31/2022
912828-6Y-8	UNITED STATES OF AMERICA NOTES FIXED 1.75% 31/JAN/2023 USD 100		1	39,465	39,465	01/31/2023
912828-6Z-9	UNITED STATES OF AMERICA NOTES FIXED 1.5% 28/FEB/2023 USD 100		1	728,564	728,564	02/28/2023
912828-7C-8	UNITED STATES OF AMERICA NOTES FIXED 2.625% 15/NOV/2020 USD 100		1	0	0	11/15/2020
912828-7D-8	UNITED STATES OF AMERICA NOTES FIXED 1.625% 30/APR/2023 USD 100		1	447,379	447,379	04/30/2023
912828-7E-7	UNITED STATES OF AMERICA NOTES FIXED 1.125% 30/JUN/2021 USD 100		1	28,121	28,121	06/30/2021
912828-7F-8	UNITED STATES OF AMERICA NOTES FIXED 2% 15/FEB/2022 USD 100		1	8	8	02/15/2022
912828-7G-4	UNITED STATES OF AMERICA NOTES FIXED 1.125% 30/SEP/2021 USD 100		1	1,203,575	1,203,575	09/30/2021
912828-7H-1	UNITED STATES OF AMERICA NOTES FIXED 1.625% 31/OCT/2023 USD 100		3	27,581	27,581	10/31/2023
912828-7J-8	UNITED STATES OF AMERICA NOTES FIXED 2% 15/FEB/2023 USD 100		1	564,049	564,049	02/15/2023
912828-7K-9	UNITED STATES OF AMERICA NOTES FIXED .375% 15/JAN/2027 USD 100		1	4	4	01/15/2027
912828-7L-8	UNITED STATES OF AMERICA NOTES FIXED 2.25% 15/FEB/2027 USD 100		1	71,087	71,087	02/15/2027
912828-7M-4	UNITED STATES OF AMERICA NOTES FIXED 2.125% 29/FEB/2024 USD 100		1	50,896	50,896	02/29/2024
912828-7N-2	UNITED STATES OF AMERICA NOTES FIXED 2.25% 31/JUL/2021 USD 100		1	3	3	07/31/2021
912828-7O-7	UNITED STATES OF AMERICA NOTES FIXED 1.875% 30/APR/2022 USD 100		1	52	52	04/30/2022
912828-7P-7	UNITED STATES OF AMERICA NOTES FIXED 1.875% 31/MAY/2022 USD 100		1	8	8	05/31/2022
912828-7Q-2	UNITED STATES OF AMERICA NOTES FIXED 2% 31/MAY/2024 USD 100		1	122,833	122,833	05/31/2024
912828-7R-3	UNITED STATES OF AMERICA NOTES FIXED 2% 30/JUN/2024 USD 100		1	123,039	123,039	06/30/2024
912828-7S-1	UNITED STATES OF AMERICA NOTES FIXED 2.75% 31/JUL/2023 USD 100		1	35,914	35,914	07/31/2023
912828-7T-4	UNITED STATES OF AMERICA NOTES FIXED 1.25% 31/AUG/2024 USD 100		1	17,654	17,654	08/31/2024
0199999	Subtotal - Bonds - U.S. Governments - Issuer Obligations			10,462,747	10,462,747	XXX
0599999	Total - U.S. Government Bonds			10,462,747	10,462,747	XXX
1099999	Total - All Other Government Bonds			0	0	XXX
1799999	Total - U.S. States, Territories and Possessions Bonds			0	0	XXX
2499999	Total - U.S. Political Subdivisions Bonds			0	0	XXX
3199999	Total - U.S. Special Revenues Bonds			0	0	XXX
06370R-2T-5	BANK OF MONTREAL CHICAGO		1	132,175	132,176	09/09/2020
06370R-R9-2	BANK OF MONTREAL CHICAGO		1	37,767	37,765	07/10/2020
06370R-Y4-5	BANK OF MONTREAL CHICAGO		1	94,411	94,411	08/06/2020
06417M-BN-4	BANK OF NOVA SCOTIA HOUSTON		1	94,411	94,411	09/08/2020
13606B-4Q-6	CIBC NY		1	132,177	132,176	08/06/2020
78012U-QD-0	ROYAL BANK OF CANADA NY		1	188,808	188,823	07/08/2020
83369Y-5Q-5	SOCIETE GENERALE NEW YORK		1	56,639	56,647	06/19/2020
83369Y-6E-1	SOCIETE GENERALE NEW YORK		1	94,460	94,425	08/14/2020
89120D-KU-2	TORONTO DOMINION BANK		1	283,276	283,234	11/05/2019
95001K-DE-1	WELLS FARGO BANK SAN FRANCISCO N.A.		1	94,411	94,411	08/20/2020
3299999	Subtotal - Bonds - Industrial and Miscellaneous (Unaffiliated) - Issuer Obligations			1,208,535	1,208,479	XXX
3899999	Total - Industrial and Miscellaneous (Unaffiliated) Bonds			1,208,535	1,208,479	XXX
4899999	Total - Hybrid Securities			0	0	XXX
5599999	Total - Parent, Subsidiaries and Affiliates Bonds			0	0	XXX
6099999	Subtotal - SVO Identified Funds			0	0	XXX
6399999	Subtotal - Bank Loans			0	0	XXX
6499999	Total - Issuer Obligations			11,671,282	11,671,226	XXX
6599999	Total - Residential Mortgage-Backed Securities			0	0	XXX
6699999	Total - Commercial Mortgage-Backed Securities			0	0	XXX
6799999	Total - Other Loan-Backed and Structured Securities			0	0	XXX
6899999	Total - SVO Identified Funds			0	0	XXX
6999999	Total - Bank Loans			0	0	XXX
7099999	Total Bonds			11,671,282	11,671,226	XXX
7399999	Total - Preferred Stocks			0	0	XXX
7799999	Total - Common Stocks			0	0	XXX
7899999	Total - Preferred and Common Stocks			0	0	XXX
000000-00-0	SHINKIN CENTRAL BANK			94,411	94,411	10/08/2019
000000-00-0	MIZUHO BANK LIMITED LONDON			75,485	75,076	10/10/2019
000000-00-0	CITIGROUP GLOBAL MARKETS INC			377,646	377,646	11/04/2019
000000-00-0	KBC, BRUSSELS			94,434	94,411	12/03/2019
000000-00-0	CITIGROUP GLOBAL MARKETS INC			188,823	188,823	11/04/2019
000000-00-0	KBC, BRUSSELS			37,768	37,765	03/12/2020
000000-00-0	KBC, BRUSSELS			94,284	93,184	10/25/2019
000000-00-0	SUMITOMO MITSUI TRUST BANK LTD, LDN			188,819	188,823	11/20/2019
000000-00-0	MORGAN STANLEY			132,176	132,176	03/30/2020
000000-00-0	AUSTRALIA NEW ZEALAND NY			94,411	94,411	10/15/2019
000000-00-0	DBS BANK LIMITED, SINGAPORE			75,529	75,529	10/08/2019
000000-00-0	UNITED OVERSEAS BANK LTD, NY			56,647	56,647	12/02/2019
000000-00-0	OP Corporate Bank plc			66,088	66,088	10/08/2019
000000-00-0	DZ BANK LONDON			37,658	37,549	11/18/2019
000000-00-0	UNITED OF OMAHA LIFE INSURANCE			94,411	94,411	10/30/2019
000000-00-0	DZ BANK LONDON			65,453	65,382	03/17/2020
000000-00-0	DZ BANK LONDON			65,453	65,386	03/17/2020
000000-00-0	CITADEL CLEARING LLC			566,468	566,468	12/24/2019
00850V-ZB-1	AGRIC BK OF CHINA LTD - NY BRANCH			37,590	37,548	12/11/2019
05586F-TA-5	BNP PARIBAS, NY			188,858	188,823	11/06/2019
05971X-NF-4	BANCO DEL ESTADO DE CHILE			94,406	94,411	11/22/2019
06119R-Z9-9	BANK OF CHINA, HONG KONG BRANCH			93,982	93,871	12/09/2019
06742T-PK-6	BARCLAYS NEW YORK			188,691	188,823	02/05/2020
22532X-LU-0	CREDIT AGRICOLE CIB, NY			94,425	94,411	12/20/2019
22549L-TC-9	CREDIT SUISSE NY			226,587	226,587	10/02/2019
23341V-YE-5	DNB NOR BANK ASA NEW YORK			75,513	75,529	03/10/2020

**SCHEDULE DL - PART 1**  
**SECURITIES LENDING COLLATERAL ASSETS**

Reinvested Collateral Assets Owned Current Statement Date

(Securities lending collateral assets reported in aggregate on Line 10 of the Assets page and not included on Schedules A, B, BA, D, DB and E)

1	2	3	4	5	6	7
CUSIP Identification	Description	Code	NAIC Designation and Administrative Symbol/ Market Indicator	Fair Value	Book/Adjusted Carrying Value	Maturity Date
44988K-HB-8	ING (US) Funding LLC			94,427	94,411	11/04/2019
53944R-X3-7	LMA AMERICAS LLC			75,516	74,527	10/03/2019
55379W-N3-6	MUFG Bank Ltd, New York Branch			94,402	94,412	02/24/2020
60710A-AA-0	MIZUHO BANK LIMITED LONDON			37,764	37,765	11/27/2019
85325T-5H-1	STANDARD CHARTERED NY			168,788	168,824	02/10/2020
85325T-5X-9	STANDARD CHARTERED NY			75,529	75,529	02/26/2020
85325T-6D-2	STANDARD CHARTERED NY			37,764	37,765	03/13/2020
86564F-E7-4	SUMITOMO MITSUI TRUST BANK LTD, NY			94,399	94,411	01/06/2020
86956J-7M-5	SVENSKA NY			132,115	132,177	06/05/2020
912796-TD-1	UNITED STATES OF AMERICA BILL ZERO CPN 13/AUG/2020 USD 100			11	11	08/13/2020
912810-EE-4	UNITED STATES OF AMERICA BOND FIXED 8.5% 15/FEB/2020 USD 100			6,567	6,567	02/15/2020
912810-EF-1	UNITED STATES OF AMERICA BOND FIXED 8.75% 15/MAY/2020 USD 100			178,604	178,604	05/15/2020
912810-EG-9	UNITED STATES OF AMERICA BOND FIXED 8.75% 15/AUG/2020 USD 100			5,155	5,155	08/15/2020
912828-3Y-4	UNITED STATES OF AMERICA NOTES FIXED 2.25% 29/FEB/2020 USD 100			4	4	02/29/2020
912828-3J-0	UNITED STATES OF AMERICA NOTES FIXED 1.375% 29/FEB/2020 USD 100			1,374	1,374	02/29/2020
912828-K3-3	UNITED STATES OF AMERICA NOTES FIXED 1.25% 15/APR/2020 USD 100			1,507,811	1,507,811	04/15/2020
912828-K5-8	UNITED STATES OF AMERICA NOTES FIXED 1.375% 30/APR/2020 USD 100			84,923	84,923	04/30/2020
94989R-2B-3	WELLS FARGO BANK SAN FRANCISCO N.A.			94,434	94,411	10/25/2019
<b>8999999 - Total - Short-Term Invested Assets (Schedule DA type)</b>				<b>6,115,603</b>	<b>6,112,870</b>	<b>XXX</b>
000000-00-0	BOFA SECURITIES, INC			94,411	94,411	10/01/2019
000000-00-0	NATIXIS NEW YORK BRANCH			121,048	121,048	10/01/2019
000000-00-0	SHIZUKA BANK NEW YORK			56,647	56,647	10/18/2019
000000-00-0	UNITED OF OMAHA LIFE INSURANCE			37,765	37,765	10/30/2019
000000-00-0	UNITED OVERSEAS BANK LTD, NY			75,529	75,529	10/11/2019
06119R-XB-6	BANK OF CHINA, HONG KONG BRANCH			94,345	93,855	10/11/2019
16955A-NH-4	CHINA CONSTRUCTION BANK CORP NY			56,647	56,647	10/01/2019
45581C-Y1-7	IND AND COM BK OF CHINA LTD, NY BR			131,922	131,395	11/01/2019
912796-RF-8	UNITED STATES OF AMERICA BILL ZERO CPN 10/OCT/2019 USD 100			2	2	10/10/2019
912796-SL-4	UNITED STATES OF AMERICA BILL ZERO CPN 03/OCT/2019 USD 100			1	1	10/03/2019
912828-LY-4	UNITED STATES OF AMERICA NOTES FIXED 3.375% 15/NOV/2019 USD 100			1,186	1,186	11/15/2019
<b>9199999 - Total - Cash Equivalents (Schedule E Part 2 type)</b>				<b>669,503</b>	<b>668,486</b>	<b>XXX</b>
<b>9999999 - Totals</b>				<b>18,456,388</b>	<b>18,452,582</b>	<b>XXX</b>

General Interrogatories:

- Total activity for the year Fair Value \$ 17,064,108 Book/Adjusted Carrying Value \$ 17,060,640
- Average balance for the year Fair Value \$ 2,897,290 Book/Adjusted Carrying Value \$ 2,895,356
- Reinvested securities lending collateral assets book/adjusted carrying value included in this schedule by NAIC designation:  
 NAIC 1 \$ 18,452,582 NAIC 2 \$ 0 NAIC 3 \$ 0 NAIC 4 \$ 0 NAIC 5 \$ 0 NAIC 6 \$ 0

**SCHEDULE DL - PART 2  
SECURITIES LENDING COLLATERAL ASSETS**

Reinvested Collateral Assets Owned Current Statement Date

(Securities lending collateral assets included on Schedules A, B, BA, D, DB and E and not reported in aggregate on Line 10 of the Assets page)

1	2	3	4	5	6	7
CUSIP Identification	Description	Code	NAIC Designation and Administrative Symbol/ Market Indicator	Fair Value	Book/Adjusted Carrying Value	Maturity Date
NONE						
9999999 - Totals						XXX

General Interrogatories:

- |                                 |                     |                                       |
|---------------------------------|---------------------|---------------------------------------|
| 1. Total activity for the year  | Fair Value \$ ..... | Book/Adjusted Carrying Value \$ ..... |
| 2. Average balance for the year | Fair Value \$ ..... | Book/Adjusted Carrying Value \$ ..... |



